

APP CRS <b>224°</b>	Rwy Idg <b>8000</b>
	TDZE <b>938</b>
	Apt Elev <b>956</b>

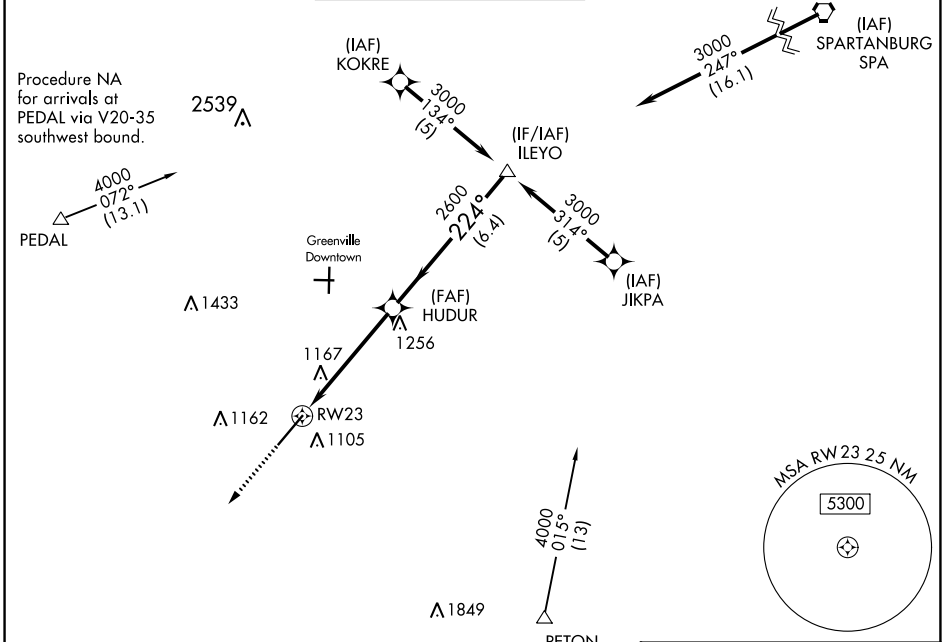
# RNAV (GPS) RWY 23

DONALDSON FLD (GYH)

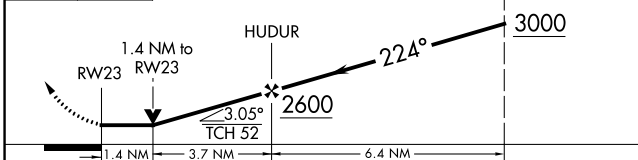
**NA** If local altimeter setting not received, use Greer altimeter setting and increase all MDAs 40 feet. VDF NA when using Greer altimeter setting. Helicopter visibility reduction below 3/4 statute mile NA. DME/DME RNP-0.3 NA.

**MISSED APPROACH:** Climb to 3000 direct NINYI and hold.

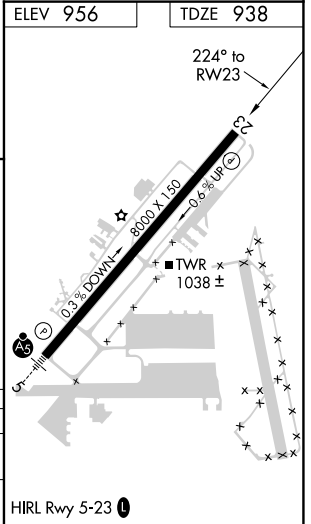
AWOS-3 <b>127.325</b>	GREER APP CON ★ <b>118.8 270.275</b>	DONALDSON TOWER ★ <b>133.325 (CTAF) 269.25</b>	GND CON <b>121.4</b>	CLNC DEL <b>121.4</b>	UNICOM <b>122.7</b>
--------------------------	---	---	-------------------------	--------------------------	------------------------



3000 NINYI VGSi and descent angles not coincident (VGSi Angle 4.14/TCH 95). Procedure Turn NA



CATEGORY	A	B	C	D
LNNAV MDA	1420-1	482 (500-1)	1420-1¼ 482 (500-1¼)	1420-1½ 482 (500-1½)
CIRCLING	1420-1 464 (500-1)	1480-1 524 (600-1)	1480-1½ 524 (600-1½)	1540-2 584 (600-2)



SE-2, 27 JAN 2022 to 24 FEB 2022

SE-2, 27 JAN 2022 to 24 FEB 2022