

BAUBB TWO ARRIVAL (RNAV)

AL-236 (FAA)

LONG BEACH (DAUGHERTY FLD) (LGB)

LONG BEACH, CALIFORNIA

ARRIVAL ROUTE DESCRIPTION

TILLIT TRANSITION (TILLIT.BAUBB2)

From BAUBB on track 087° to cross STYFF at or below 9000.

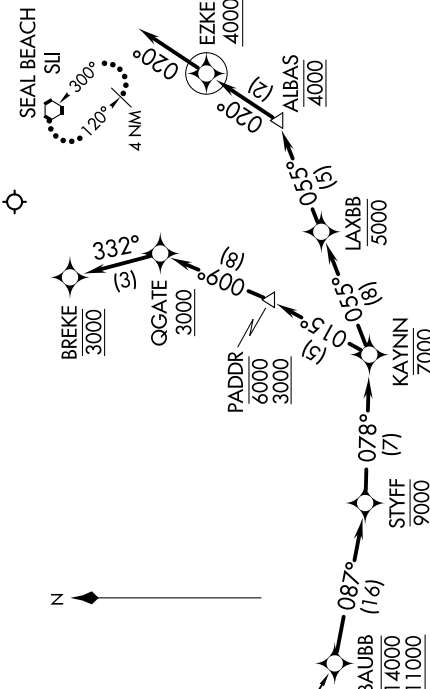
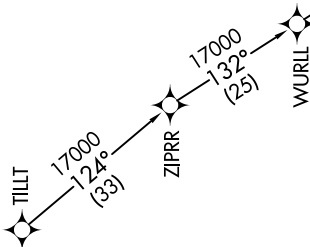
LANDING RUNWAY 12: From STYFF on track 078° to cross KAYNN at or below 7000, then on track 015° to cross PADDR between 3000 and 6000, then on track 009° to cross QGATE at or above 3000, then on track 332° to cross BREKE at 3000. Expect RNAV (RNP) RWY 12 approach.

LANDING RUNWAYS 26R, 30: From STYFF on track 078° to cross KAYNN at or below 7000, then on track 055° to cross LAXBB at or below 5000, then on track 055° to cross ALBAS at 4000, then on track 020° to cross EZKEL at or above 4000, then on track 020°. Expect RNAV (RNP) Y RWY 30 or RADAR vectors to final approach course.

LOST COMMUNICATIONS

RUNWAYS 26R, 30: After ALBAS proceed on the RNAV (RNP) Y RWY 30 or ILS or LOC RWY 30 approach.
RUNWAY 12: After BREKE proceed on the RNAV (RNP) RWY 12 approach.
If unable approach to LGB, after ALBAS/BREKE climb to 4000 direct SLI VORTAC and hold.

SOCAL APP CON
127.4 263.025
ATIS
127.75
LONG BEACH TOWER*
120.5 257.6 (Rwy 12)
119.4 257.6 (Rwy 30)



NOTE: RADAR required.

NOTE: RNAV 1.

NOTE: DME/DME/IRU or GPS required.

NOTE: Expect Rwy 30 unless otherwise assigned by ATC.

NOTE: Turbojet and high performance turboprop aircraft only.

NOTE: Chart not to scale.

BAUBB TWO ARRIVAL (RNAV)

LONG BEACH, CALIFORNIA

LONG BEACH (DAUGHERTY FLD) (LGB)