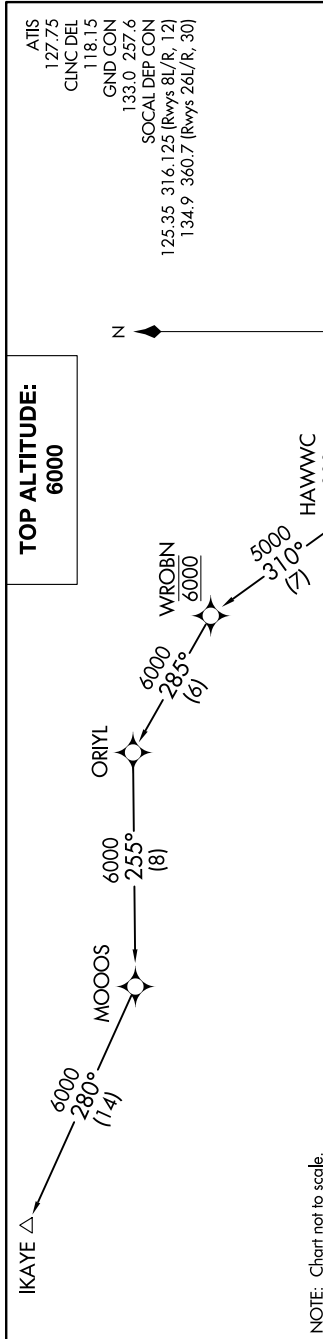


SW-3, 27 JAN 2022 to 24 FEB 2022



NOTE: Chart not to scale.

DEPARTURE ROUTE DESCRIPTION

TAKEOFF RUNWAYS 8L/R: Climb heading 076° to 580, then on heading 076° or as assigned by ATC for vectors to PIJIN, cross PIJIN at or above 4000, then on track 290° to cross HAWWC at or above 5000, thence

TAKEOFF RUNWAY 12: Climb heading 121° to 580, then on heading 121° or as assigned by ATC for vectors to PIJIN, cross PIJIN at or above 4000, then on track 290° to cross HAWWC at or above 5000, thence

TAKEOFF RUNWAY 26L: Climb heading 256° to 800, then on heading 270° or as assigned by ATC for vectors to PIJIN, cross PIJIN at or above 4000, then on track 290° to cross HAWWC at or above 5000, thence

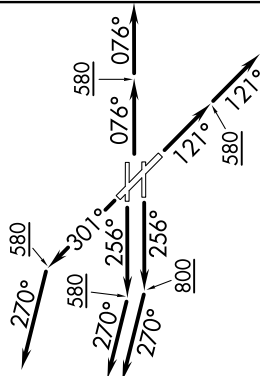
TAKEOFF RUNWAY 26R: Climb heading 256° to 580, then on heading 270° or as assigned by ATC for vectors to PIJIN, cross PIJIN at or above 4000, then on track 290° to cross HAWWC at or above 5000, thence

TAKEOFF RUNWAY 30: Climb heading 301° to 580, then on heading 270° or as assigned by ATC for vectors to PIJIN, cross PIJIN at or above 4000, then on track 290° to cross HAWWC at or above 5000, thence

. . . . on (transition). Maintain 6000. Expect higher altitude 10 minutes after departure.

IKAYE TRANSITION (HAWWC3-1KAYE)

ATIS 127.75
 CINCL DEL 118.15
 GND CON 133.0 257.6
 SOCAL DEP CON 125.35 316.125 (Rwys 8L/R, 12)
 134.9 360.7 (Rwys 26L/R, 30)



TAKEOFF MINIMUMS

Rwys 8L/R, 12, 30: Standard.
 Rwy 26L: Standard with minimum climb of 330' per NM to 700.
 Rwy 26R: Standard with minimum climb of 230' per NM to 1600.

NOTE: RADAR required.

NOTE: RNAV 1.

NOTE: DME/DME/IRU or GPS required.

NOTE: This procedure not authorized for turbojet aircraft.

SW-3, 27 JAN 2022 to 24 FEB 2022