

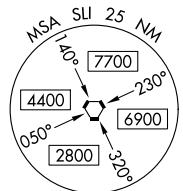
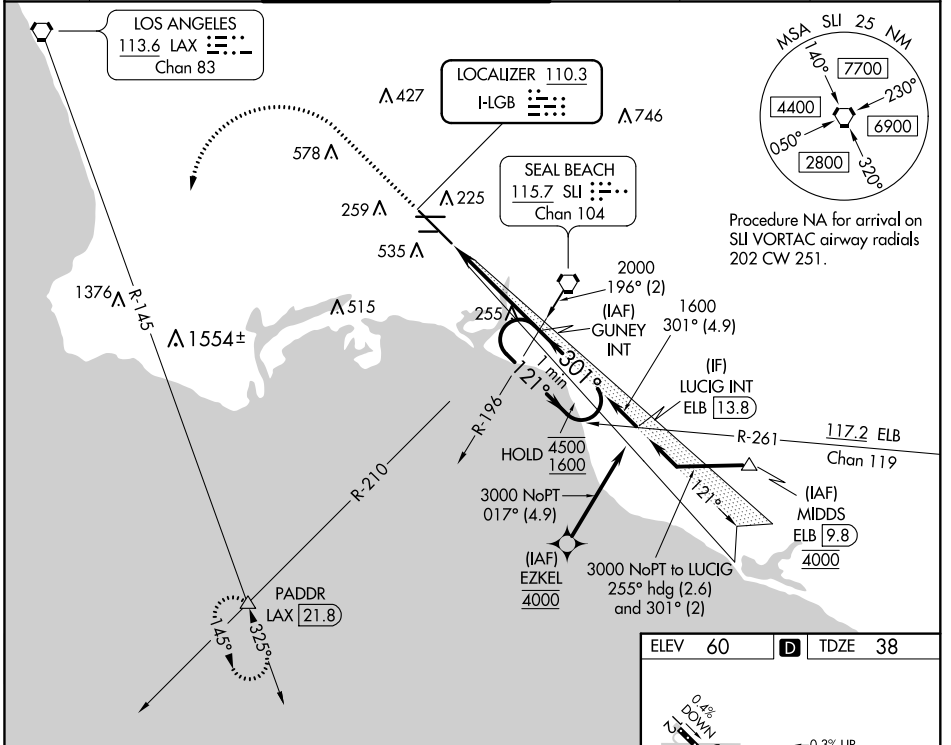
LOC I-LGB 110.3	APP CRS 301°	Rwy ldg TDZE Apt Elev 7414 38
---------------------------	------------------------	--

ILS or LOC RWY 30

LONG BEACH (DAUGHERTY FLD) (LGB)

From EZKEL: RNAV 1-GPS required.	MALSR	MISSED APPROACH: Climb to 800 then climbing left turn to 3000 on heading 200° and LAX VORTAC R-145 to PADDR INT/LAX 21.8 DME and hold.
▼ For inop ALS, increase S-LOC 30 Cats C/D visibility to 1 3/8 SM.		

ATIS 127.75	SOCAL APP CON 125.35 316.125	LONG BEACH TOWER ★ 120.5 257.6 (Rwy 12) 119.4 (CTAF) 257.6 (Rwy 30)	GND CON 133.0 257.6	CLNC DEL 118.15	UNICOM 122.95
-----------------------	--	--	-------------------------------	---------------------------	-------------------------

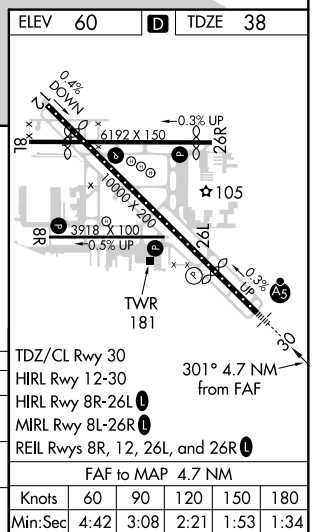


Procedure NA for arrival on SLI VORTAC airway radials 202 CW 251.

SW-3, 27 JAN 2022 to 24 FEB 2022

SW-3, 27 JAN 2022 to 24 FEB 2022

800	3000	LAX R-145	PADDR	GUNNEY INT	One Minute Holding Pattern
↑	hdg 200°		△	1600	
VGSI and ILS glidepath not coincident (VGSI Angle 3.00/TCH 73).					
				4500	1600
				GS 3.00°	TCH 58
				4.7 NM	
CATEGORY	A	B	C	D	
S-ILS 30	258/18		220 (200-1/2)		
S-LOC 30	520/24	482 (500-1/2)	520/50	482 (500-1)	
CIRCLING	840-1	780 (800-1)	840-2 1/4 780 (800-2 1/4)	840-2 1/2 780 (800-2 1/2)	



ILS or LOC RWY 30