

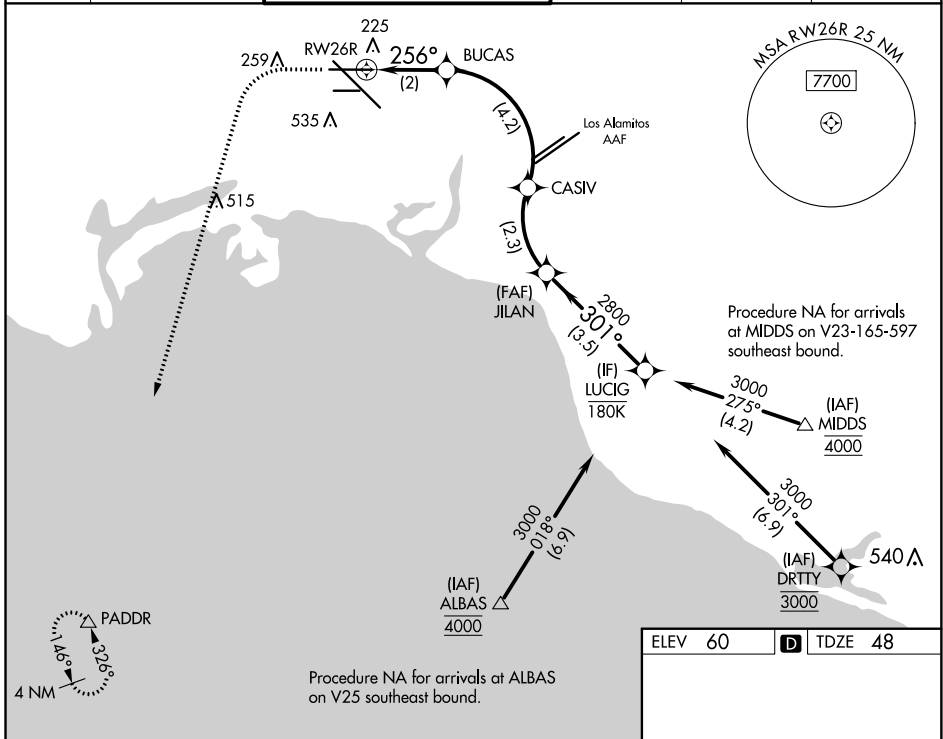
APP CRS	Rwy Idg	5660
256°	TDZE	48
	Apt Elev	60

RNAV (RNP) RWY 26R

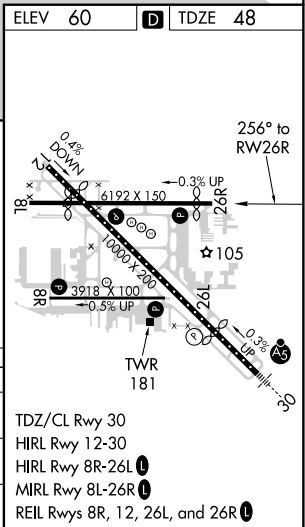
LONG BEACH (DAUGHERTY FLD) (LGB)

RNP AR APCH. RF required.		MISSED APPROACH: Climb to 800 then climbing left turn to 3000 direct PADDR and hold.
<p>▼ For uncompensated Baro-VNAV systems, procedure NA below 4°C (40°F) or above 54°C (130°F).</p> <p>▲</p>		

ATIS 127.75	SOCAL APP CON 125.35 316.125	LONG BEACH TOWER* 120.5 257.6 (Rwy 12) 119.4 (CTAF) 257.6 (Rwy 30)	GND CON 133.0 257.6	CLNC DEL 118.15	UNICOM 122.95
-----------------------	--	---	-------------------------------	---------------------------	-------------------------



800	3000	PADDR	VGSI and RNAV glidepath not coincident (VGSI Angle 3.10/TCH 62).	LUCIG
<p>CASIV 2066 JILAN 2800 LUCIG 3000</p> <p>BUCAS 731 RWY 26R 256° 301° 2800</p> <p>GP 3.00° TCH 55</p> <p>2 NM 4.2 NM 2.3 NM 3.5 NM</p>				
CATEGORY	A	B	C	D
RNP 0.15 DA	320-1 272 (300-1)			
RNP 0.30 DA	415-1¼ 367 (400-1¼)			
AUTHORIZATION REQUIRED				



SW-3, 27 JAN 2022 to 24 FEB 2022

SW-3, 27 JAN 2022 to 24 FEB 2022