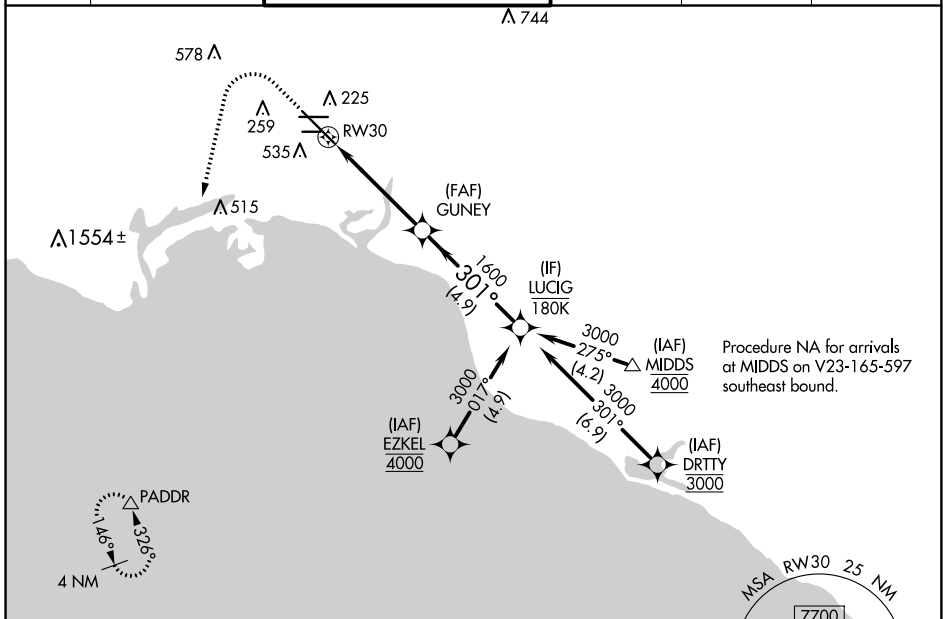


APP CRS	Rwy Idg	<b>7414</b>
<b>301°</b>	TDZE	<b>38</b>
	Apt Elev	<b>60</b>

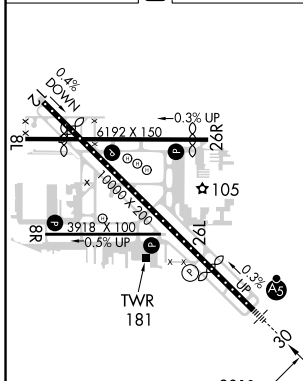
# RNAV (RNP) Y RWY 30

LONG BEACH (DAUGHERTY FLD) (LGB)

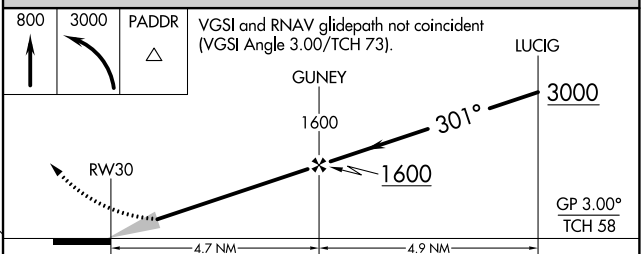
RNP AR APCH.		MALSR	MISSED APPROACH: Climb to 800 then climbing left turn to 3000 direct PADDR and hold.		
<p>For uncompensated Baro-VNAV systems, procedure NA below 4° C or above 54° C.</p>					
ATIS	SOCAL APP CON	LONG BEACH TOWER*	GND CON	CLNC DEL	UNICOM
<b>127.75</b>	<b>125.35 316.125</b>	<b>120.5 257.6</b> (Rwy 12) <b>119.4</b> (CTAF) <b>257.6</b> (Rwy 30)	<b>133.0 257.6</b>	<b>118.15</b>	<b>122.95</b>



ELEV 60	<b>D</b>	TDZE 38
---------	----------	---------



TDZ/CL Rwy 30	HIRL Rwy 12-30	HIRL Rwy 8R-26L	MIRL Rwy 8L-26R	REIL Rws 8R, 12, 26L, and 26R
---------------	----------------	-----------------	-----------------	-------------------------------



CATEGORY	A	B	C	D
RNP 0.30 DA	384/30 346 (400-5%)			

## AUTHORIZATION REQUIRED

SW-3, 27 JAN 2022 to 24 FEB 2022

SW-3, 27 JAN 2022 to 24 FEB 2022