

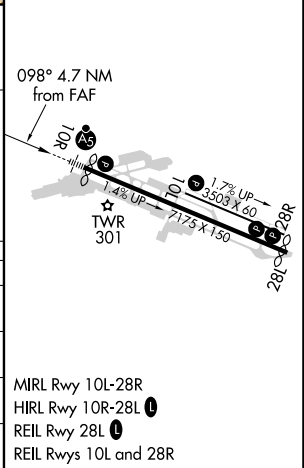
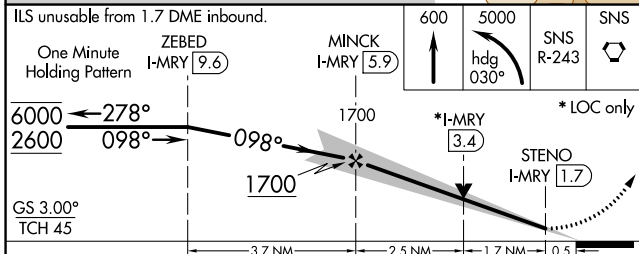
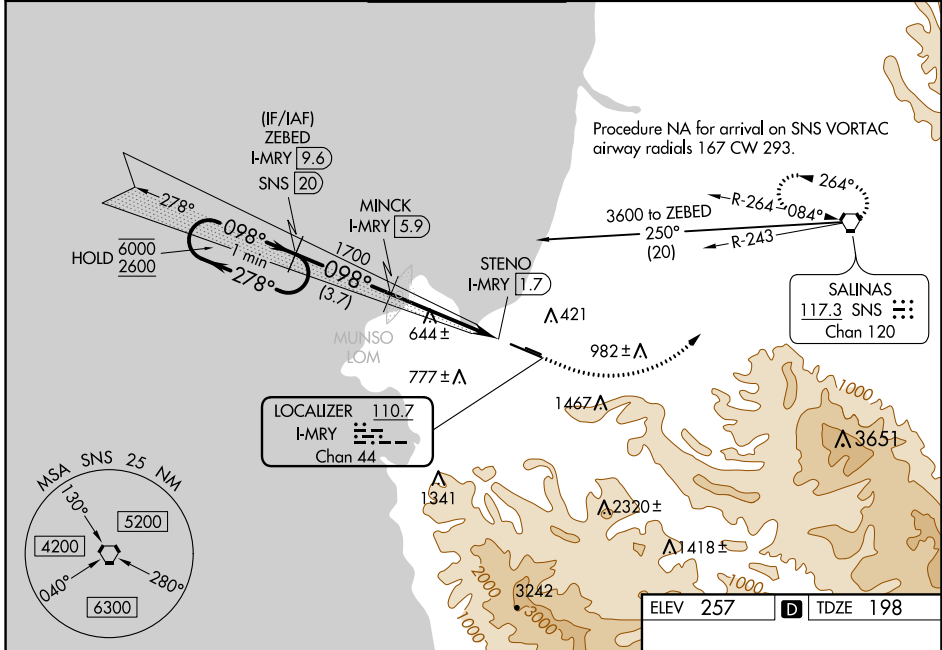
LOC/DME I-MRY	APP CRS	Rwy ldg	7000
110.7	098°	TDZE	198
Chan 44		Apt Elev	257

ILS or LOC RWY 10R

MONTEREY RGNL (MR Y)

DME required.			MISSED APPROACH: Climb to 600 then climbing left turn to 5000 on heading 030° and on SNS VORTAC R-243 to SNS VORTAC and hold, continue climb-in-hold to 5000. # Missed approach requires minimum climb of 265 feet per NM to 1360.
Circling NA south of Rwy 10R-28L. For inop ALS, increase S-ILS 10R all Cats visibility to RVR 6000, and increase S-LOC 10R Cat C and D visibility to 2 SM.			

ATIS	NORCAL APP CON	MONTEREY TOWER *	GND CON	CLNC DEL	UNICOM
119.25	133.0 251.15 (340°-144°) 127.15 307.125 (145°-339°)	118.4 (CTAF) 257.8	120.875 348.6	135.45	122.95



CATEGORY	A	B	C	D
S-ILS 10R#		398/24	200 (200-½)	
S-ILS 10R		583/35	385 (400-½)	
S-LOC 10R	920/24	722 (700-½)	920-1½	722 (700-1½)
CIRCLING	920-1	663 (700-1)	1280-3 1023 (1100-3)	NA

SW-2, 27 JAN 2022 to 24 FEB 2022

SW-2, 27 JAN 2022 to 24 FEB 2022