

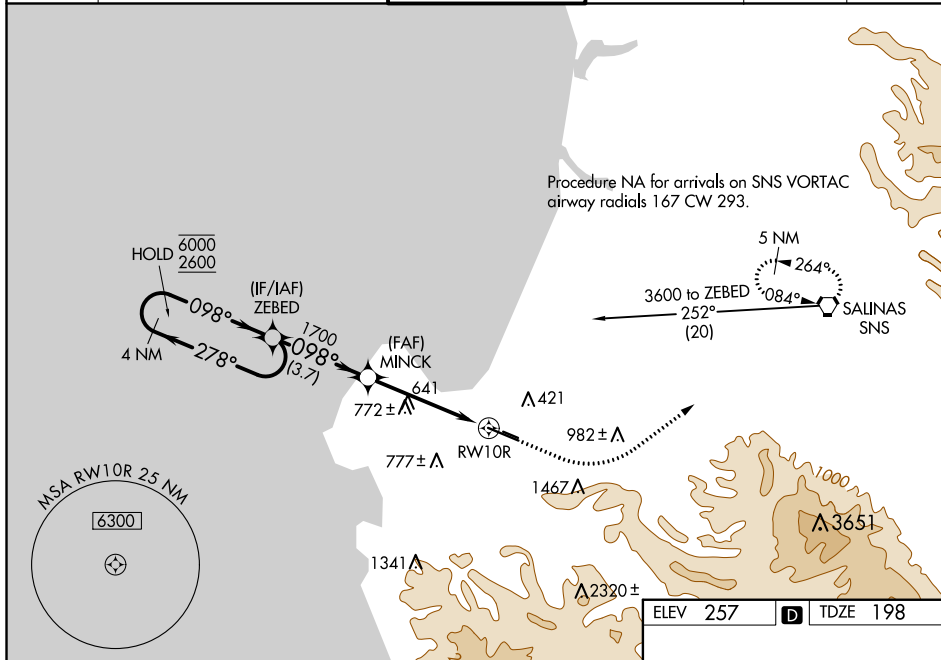
WAAS CH <b>69602</b> <b>W10A</b>	APP CRS <b>098°</b>	Rwy Idg TDZE Apt Elev	<b>7000</b> <b>198</b> <b>257</b>
--	------------------------	-----------------------------	---

# RNAV (GPS) RWY 10R

MONTEREY RGNL (MRY)

RNP APCH.	MALSRS	MISSED APPROACH: Climb to 1000 then climbing left turn to 5000 direct SNS VORTAC and hold, continue climb-in-hold to 5000.
<p><b>▼</b> Circling NA south of Rwy 10R and 28L. For uncompensated Baro-VNAV systems, LNAV/VNAV NA below 0°C or above 54°C. For inop ALS, increase LPV visibility all Cats to 1½ SM, LNAV/VNAV visibility all Cats and LNAV Cat C/D to 2½ SM.</p>		

ATIS <b>119.25</b>	NORCAL APP CON <b>133.0 251.15</b> (340°-144°) <b>127.15 307.125</b> (145°-339°)	MONTEREY TOWER★ <b>118.4</b> (CTAF) <b>0 257.8</b>	GND CON <b>120.875 348.6</b>	CLNC DEL <b>135.45</b>	UNICOM <b>122.95</b>
-----------------------	--	---	---------------------------------	---------------------------	-------------------------



ELEV 257		D TDZE 198	
4 NM Holding Pattern		1000	5000 SNS
<p>6000 ← 278°</p> <p>2600 ← 098°</p> <p>GP 3.00° TCH 45</p>		MINCK	*2.4 NM to RWY 10R
<p>098°</p> <p>1700</p>		RWY 10R	*LNAV only
<p>3.7 NM</p> <p>2.3 NM</p> <p>2.4 NM</p>			
CATEGORY	A	B	C
LPV DA		718-1½	520 (500-1½)
LNAV/VNAV DA		789-1¾	591 (600-1¾)
LNAV MDA	980/24 782 (800-½)	980/40 782 (800-¾)	980-1¾ 782 (800-1¾)
CIRCLING	980-1 723 (800-1)	980-1¼ 723 (800-¼)	1280-3 1023 (1100-3)

098° to RWY 10R

100' AS

1.4% UP

1.7% UP

2503 X 60

7175 X 150

280' AS

TWR 301

SW-2, 27 JAN 2022 to 24 FEB 2022

SW-2, 27 JAN 2022 to 24 FEB 2022