

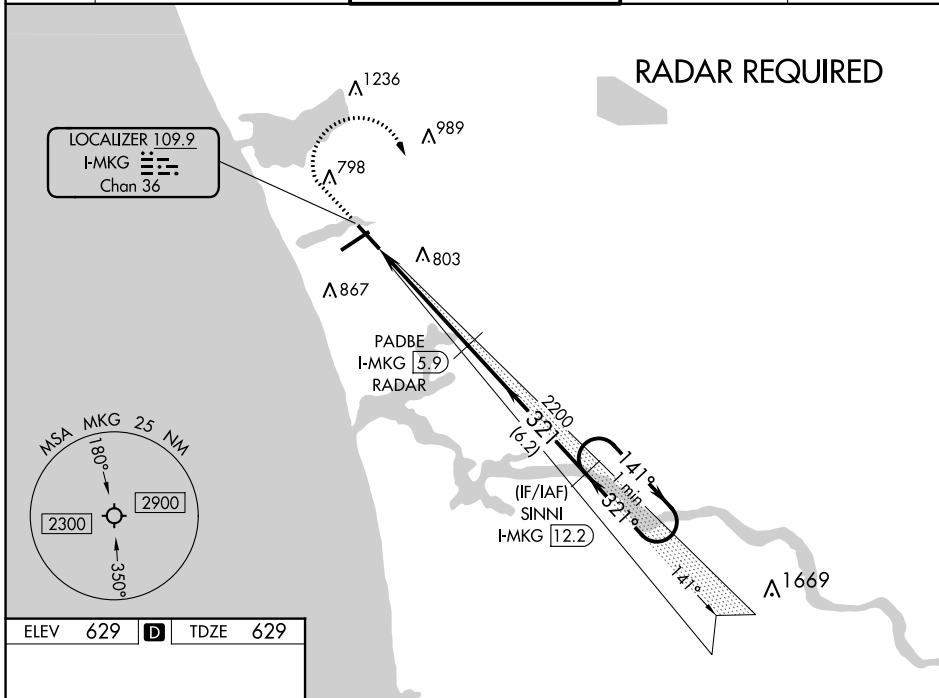
LOC/DME I-MKG 109.9 Chan 36	APP CRS 321°	Rwy ldg TDZE Apt Elev 6100 629 629
---	------------------------	--

ILS or LOC RWY 32

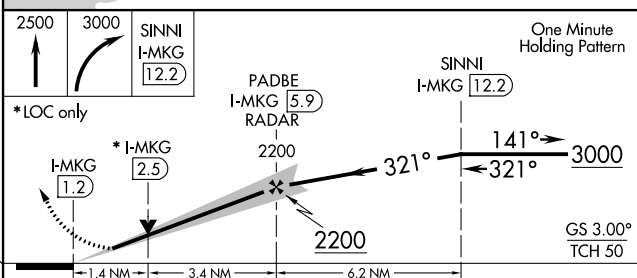
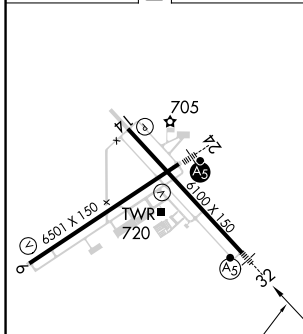
MUSKEGON COUNTY (MKG)

DME or RADAR required. RNAV 1-GPS required.		MALSR	MISSED APPROACH: Climb to 2500 then climbing right turn to 3000 direct SINNI and hold.	
<p>▽ For inop ALS, increase S-LOC Cat C/D visibility to 1 3/8 SM. ▲ **RVR 1800 authorized with use of FD or AP or HUD to DA.</p>				

ATIS 124.3	GREAT LAKES APP CON ★ 119.8 290.35 (North) 133.825 290.35 (South)	MUSKEGON TOWER ★ 126.25 (CTAF) 0 343.725	GND CON 121.6	UNICOM 122.95
----------------------	---	---	-------------------------	-------------------------



ELEV 629	D	TDZE 629
-----------------	----------	-----------------



REIL Rwy 6	REIL Rwy 14	HIRL Rwy 6-24	HIRL Rwy 14-32	
FAF to MAP 4.8 NM				
Knots	60	90	120 150 180	
Min:Sec	4:48	3:12	2:24 1:55 1:36	
CATEGORY	A	B	C D	
S-ILS 32**	829/24 200 (200-1/2)			
S-LOC 32	1120/24 491 (500-1/2)	1120/50 491 (500-1)		
C CIRCLING	1120-1 491 (500-1)	1180-1 551 (600-1)	1200-1 571 (600-1 1/2)	1200-2 571 (600-2)

EC-1, 27 JAN 2022 to 24 FEB 2022

EC-1, 27 JAN 2022 to 24 FEB 2022