

WAAS CH 69410 W14A	APP CRS 141°	Rwy Idg TDZE Apt Elev	6100 627 629
--	------------------------	-----------------------------	---

RNAV (GPS) RWY 14

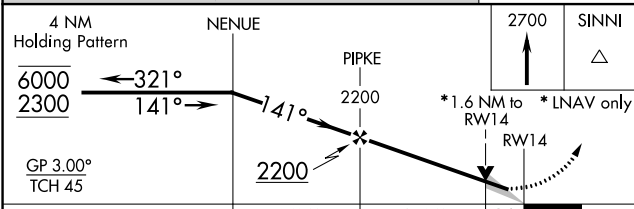
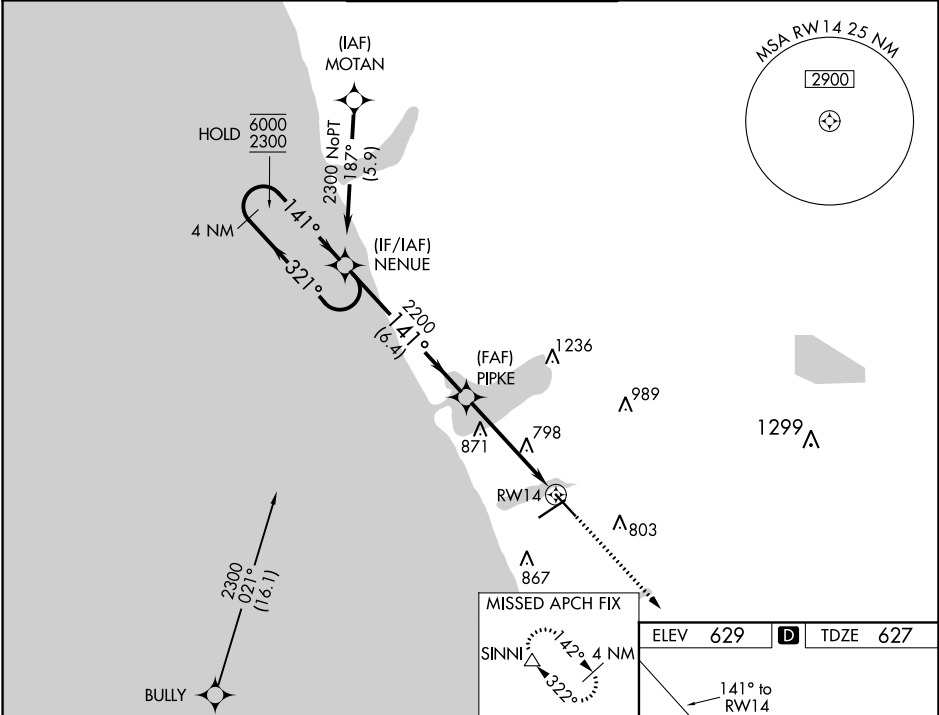
MUSKEGON COUNTY (MKG)

RNP APCH.

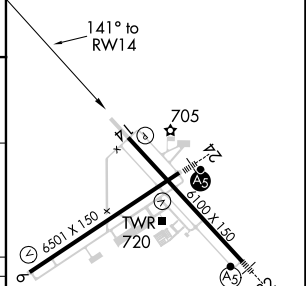
ASR For uncompensated Baro-VNAV systems, LNAV/VNAV NA below -18°C or above 54°C.

MISSED APPROACH:
Climb to 2700 direct SINKI and hold.

ATIS 124.3	GREAT LAKES APP CON* 119.8 290.35 (North) 133.825 290.35 (South)	MUSKEGON TOWER* 126.25 (CTAF) 343.725	GND CON 121.6	UNICOM 122.95
----------------------	--	--	-------------------------	-------------------------



ELEV 629	D	TDZE 627
----------	----------	----------



CATEGORY	A	B	C	D
LPV DA		877-3/4	250 (300-3/4)	
LNAV/VNAV DA		1079-1 1/2	452 (500-1 1/2)	
LNAV MDA	1180-1	553 (600-1)	1180-1 1/8 553 (600-1 1/8)	1180-1 3/4 553 (600-1 3/4)
C CIRCLING	1180-1	551 (600-1)	1200-1 1/8 571 (600-1 1/8)	1200-2 571 (600-2)

REIL Rwy 6 **6**
 REIL Rwy 14
 HIRL Rwys 6-24 **6**
 HIRL Rwys 14-32

EC-1, 27 JAN 2022 to 24 FEB 2022

EC-1, 27 JAN 2022 to 24 FEB 2022