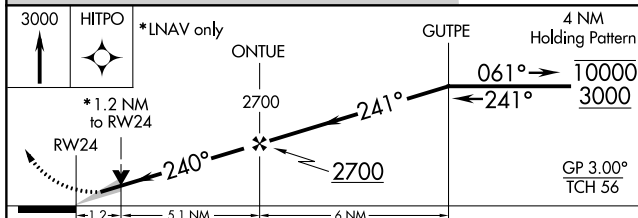
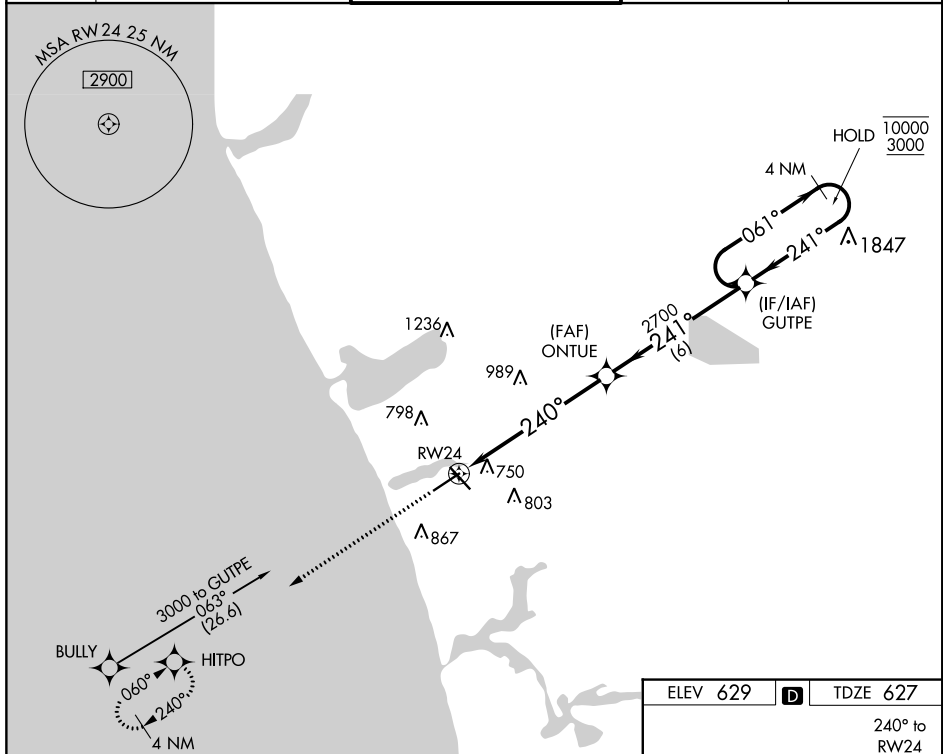


WAAS CH 42918 W24A	APP CRS 240°	Rwy ldg TDZE Apt Elev	6501 627 629
--	------------------------	-----------------------------	---

RNAV (GPS) RWY 24
MUSKOGON COUNTY (MKG)

RNP APCH. ▼ For uncompensated Baro-VNAV systems, LNAV/VNAV NA below -18°C or above 54°C. For inop ALS, increase LPV visibility all Cats to 3/4 SM, LNAV/VNAV visibility all Cats to 1 3/8 SM, LNAV Cats A/B to 1 SM and LNAV Cats C/D to 1 3/8 SM. ▲ ASR		MALS R ⚡	MISSED APPROACH: Climb to 3000 direct HITPO and hold.
--	--	-------------	--

ATIS 124.3	GREAT LAKES APP CON* 119.8 290.35 (North) 133.825 290.35 (South)	MUSKOGON TOWER* 126.25 (CTAF) 343.725	GND CON 121.6	UNICOM 122.95
----------------------	--	--	-------------------------	-------------------------



CATEGORY	A	B	C	D
LPV DA	827-1/2	200 (200-1/2)		
LNAV/VNAV DA	1092-1	465 (500-1)		
LNAV MDA	1080-1/2	453 (500-1/2)	1080-7/8	453 (500-7/8)
CIRCLING	1080-1 451 (500-1)	1180-1 551 (600-1)	1200-1 1/2 571 (600-1 1/2)	1200-2 571 (600-2)

ELEV 629 **D** TDZE 627

A diagram of the airport layout showing RWY 6, RWY 14, RWY 24, and various navigation aids. The diagram shows the runway layout, the tower location, and the MALS R. The diagram also shows the distances from the runway to the MALS R and the tower location.

REL Rwy 6	Ⓚ
REL Rwy 14	Ⓚ
HIRL Rwy 6-24	Ⓚ
HIRL Rwy 14-32	Ⓚ