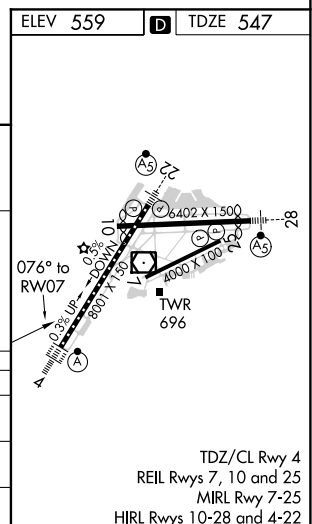
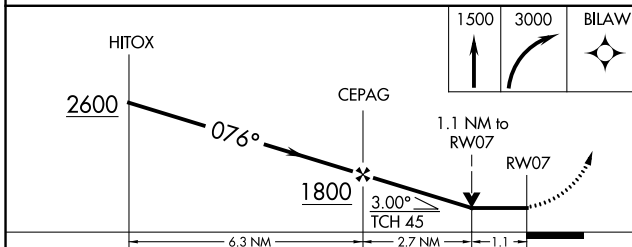
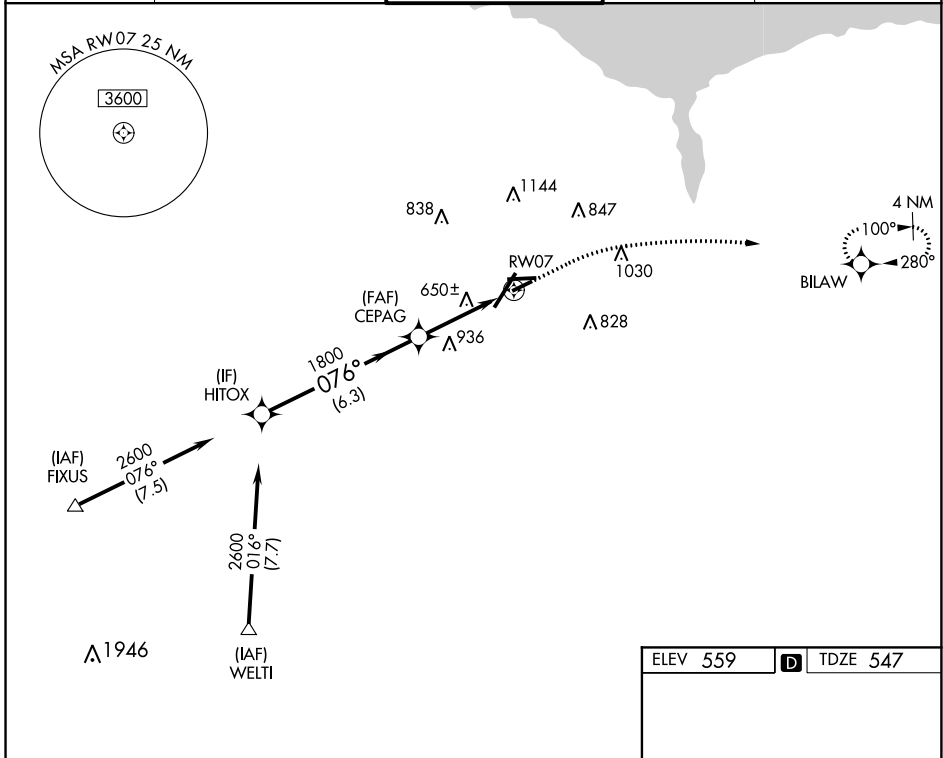


WAAS CH 61334 W07A	APP CRS 076°	Rwy Idg 4000 TDZE 547 Apt Elev 559
--	------------------------	---

RNAV (GPS) RWY 7

FREDERICK DOUGLASS/GREATER ROCHESTER INTL (ROC)

RNP APCH - GPS.		MISSED APPROACH: Climb to 1500 then climbing right turn to 3000 direct BILAW and hold.		
▼ Rwy 7 helicopter visibility reduction below ¾ SM NA.				
ATIS 124.825	ROCHESTER APP CON 119.55 269.6	ROCHESTER TOWER 118.3 254.3	GND CON 121.7	CLNC DEL 118.8 343.65



CATEGORY	A	B	C	D
LP MDA	940-1	393 (400-1)	940-1½	393 (400-1½)
LNAV MDA	1060-1	513 (600-1)	1060-1¾	513 (600-1¾)
☐ CIRCLING	1060-1	501 (600-1)	1500-2¾ 941 (1000-2¾)	1500-3 941 (1000-3)

RNAV (GPS) RWY 7

TDZ/CL Rwy 4
REIL Rwys 7, 10 and 25
MIRL Rwy 7-25
HIRL Rwys 10-28 and 4-22

NE-2, 27 JAN 2022 to 24 FEB 2022

NE-2, 27 JAN 2022 to 24 FEB 2022