

WAAS CH <b>58122</b> <b>W22A</b>	APP CRS <b>220°</b>	Rwy Idg TDZE Apt Elev	<b>7001</b> <b>378</b> <b>378</b>
--	------------------------	-----------------------------	---

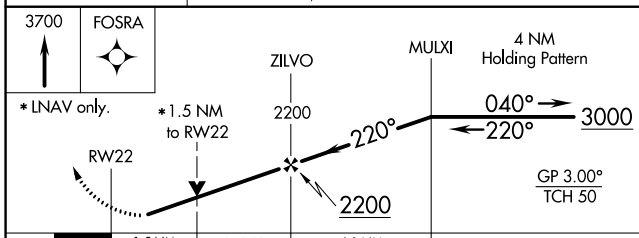
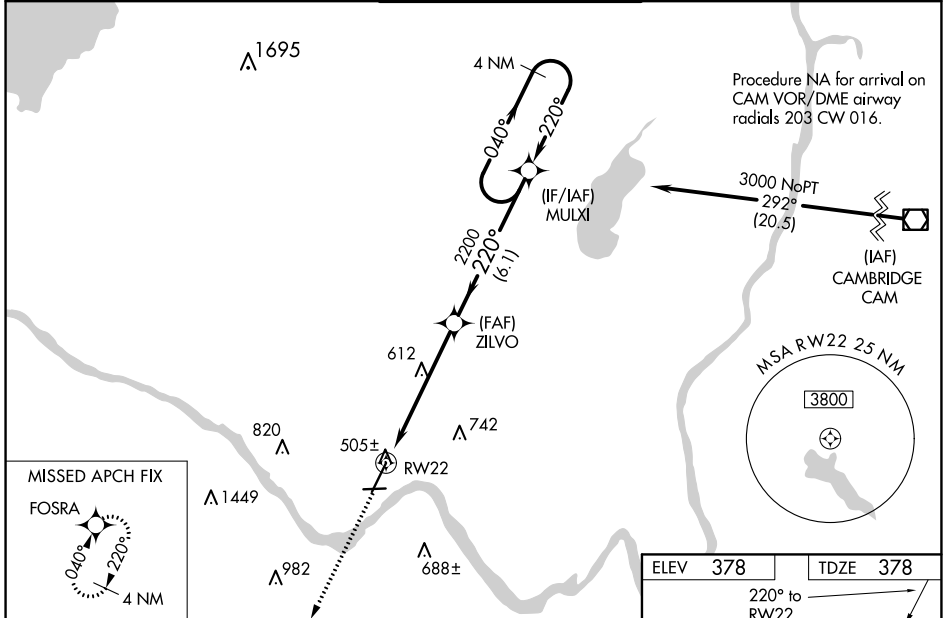
# RNAV (GPS) RWY 22

SCHENECTADY COUNTY (SCH)

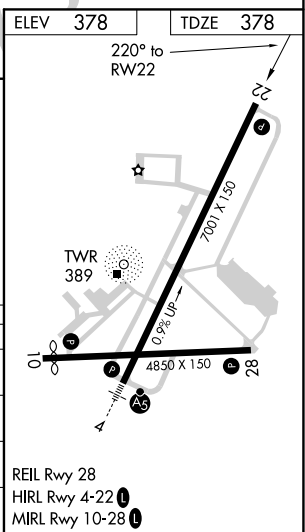
**NA** Circling Rwy 10 NA at night. Baro-VNAV NA when using Albany altimeter setting. For uncompensated Baro-VNAV systems, LNAV/VNAV NA below -15°C (5°F) or above 54°C (130°F), DME/DME RNP-0.3 NA. Helicopter visibility reduction below ¾ SM NA. VDP NA with Albany altimeter setting. When local altimeter setting not received, use Albany altimeter setting and increase LPV DA to 661, LNAV/VNAV DA to 749, and all MDA 40 feet, increase LPV and LNAV/VNAV all Cats, LNAV Cat C and D and Circling Cat C visibility ½ mile.

**MISSED APPROACH:** Climb to 3700 direct FOSRA and hold.

AWOS-3 <b>119.275</b>	ALBANY APP CON <b>132.825 263.075</b>	SCHENECTADY TOWER ★ <b>121.3 (CTAF) 0 321.1</b>	GND CON <b>121.9</b>	UNICOM <b>122.95</b>
--------------------------	--	--	-------------------------	-------------------------



CATEGORY	A	B	C	D
LPV DA		628-¾	250 (300-¾)	
LNAV/VNAV DA		716-1½	338 (400-1½)	
LNAV MDA	900-1	522 (600-1)	900-1½	522 (600-1½)
CIRCLING	900-1 522 (600-1)	940-1 562 (600-1)	1120-2¼ 742 (800-2¼)	1320-3 942 (1000-3)



NE-2, 27 JAN 2022 to 24 FEB 2022

NE-2, 27 JAN 2022 to 24 FEB 2022