

WAAS CH 42722 W04A	APP CRS 040°	Rwy Idg TDZE Apt Elev	7001 338 378
--	------------------------	-----------------------------	---


RNAV (GPS) RWY 4

SCHENECTADY COUNTY (SCH)

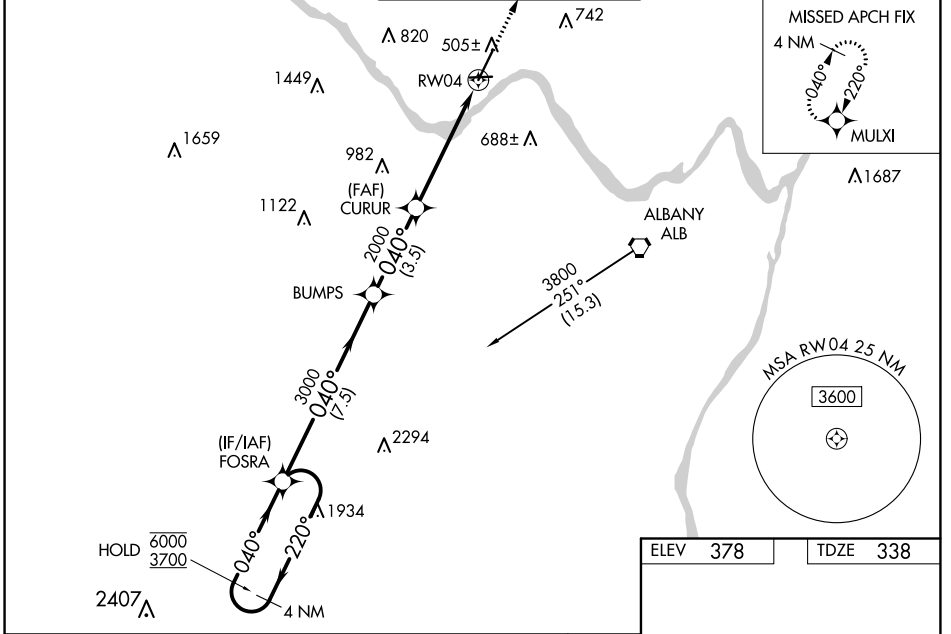
RNP APCH.

▼ Circling Rwy 10 NA at night. Baro-VNAV and VDP NA when using Albany altimeter setting. Rwy 4 helicopter visibility reduction below 3/4 SM NA. Inop table does not apply to LPV.

▲ For uncompensated Baro-VNAV systems, LNAV/VNAV NA below -15°C or above 54°C. When local altimeter setting not received, use Albany altimeter setting and increase LPV DA to 621 feet, LNAV/VNAV DA to 638 feet, and increase all MDAs 40 feet. For inop ALS, increase LNAV/VNAV all Cats visibility to 3/4 SM and LNAV Cats A/B to 1 SM and Cats C/D to 1 3/4 SM. For inop ALS when using Albany altimeter setting, increase LPV all Cats visibility to 3/4 SM, increase LNAV/VNAV all Cats to 3/4 SM, increase LNAV Cats A/B visibility to 1 SM, and Cats C/D to 1 3/4 SM.

MALSR  MISSED APPROACH: Climb to 3000 direct MULXI and hold.

AWOS-3 119.275	ALBANY APP CON 132.825 263.075	SCHENECTADY TOWER * 121.3 (CTAF) 0 321.1	GND CON 121.9	UNICOM 122.95
--------------------------	--	--	-------------------------	-------------------------



4 NM Holding Pattern

FOSRA

6000 ← 220°

3700 → 040°

GP 3.00° TCH 55

3000

2000

7.5 NM

3.5 NM

3.8 NM

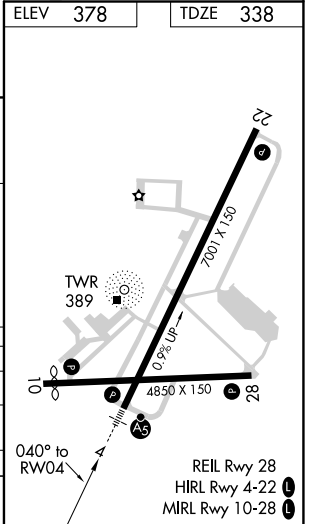
1.3

MULXI

*LNAV only.

*1.3 NM to RWY 4

CATEGORY	A	B	C	D
LPV DA		588-3/4	250 (300-3/4)	
LNAV/VNAV DA		605-3/4	267 (300-3/4)	
LNAV MDA	800-3/4	462 (500-3/4)	800-1	462 (500-1)
C CIRCLING	880-1 502 (600-1)	940-1 562 (600-1)	1120-2 1/4 742 (800-2 1/4)	1320-3 942 (1000-3)



NE-2, 27 JAN 2022 to 24 FEB 2022

NE-2, 27 JAN 2022 to 24 FEB 2022