

# HI-TACAN Z RWY 33

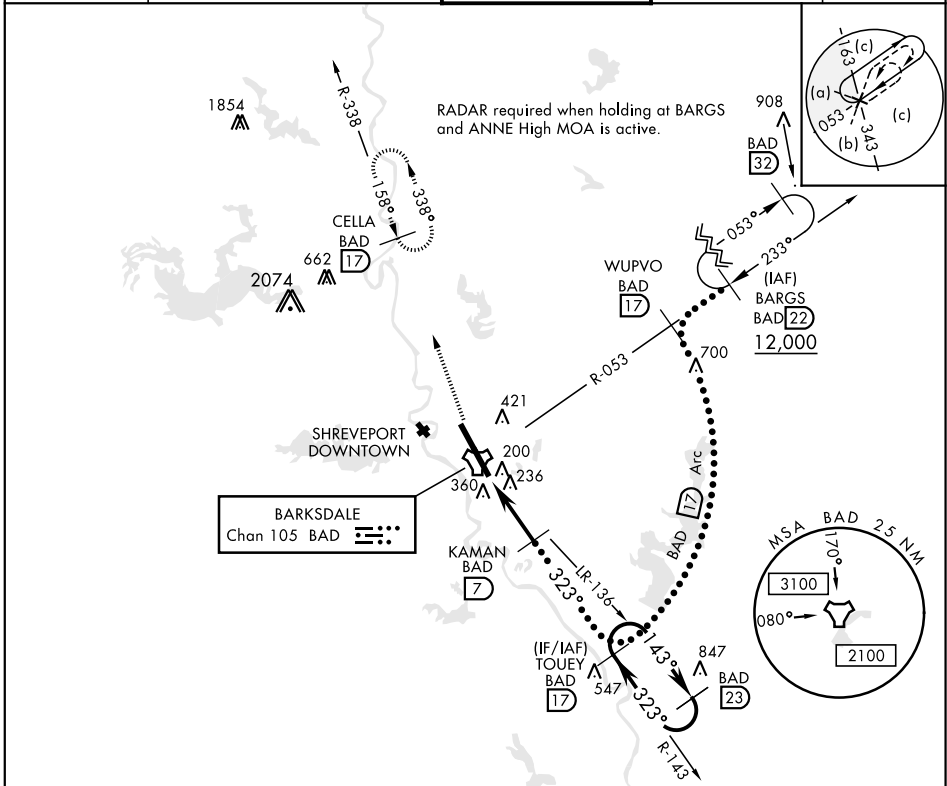
TACAN BAD Chan 105	APCH CRS <b>323°</b>	Rwy ldg <b>11,758</b> THRE <b>161</b> Arprt Elev <b>165</b>	JAL-391 [USAF]	BARKSDALE AFB (KBAD)
-----------------------	-------------------------	---	----------------	----------------------

\* When ALS inop, increase CAT CDE vis to 1 $\frac{1}{2}$  miles.  
 \*\* Circling not authorized W of Rwy.



MISSED APPROACH: Climb to 4000 via BAD R-338 direct CELLA and hold.

ATIS <b>307.025</b>	SHREVEPORT APP CON 320°-152° <b>123.75 360.725</b> 153°-319° <b>119.9 335.55</b>	BARKSDALE TOWER <b>128.25 278.3</b>	GND CON <b>121.8 253.5</b>	ASR
------------------------	--	--	-------------------------------	-----



SC-4, 27 JAN 2022 to 24 FEB 2022

SC-4, 27 JAN 2022 to 24 FEB 2022

EMERG SAFE ALT 100 NM 3300

4000 BAD R-338	CELLA BAD R-338	ELEV 165	THRE 161
CATEGORY	C	D	E
S-33*	640/50	479 (500-1)	
CIRCLING**	NOT AUTHORIZED	760-2 595 (600-2)	780-2 $\frac{1}{4}$ 615 (700-2 $\frac{1}{4}$ )

# HI-TACAN Z RWY 33