

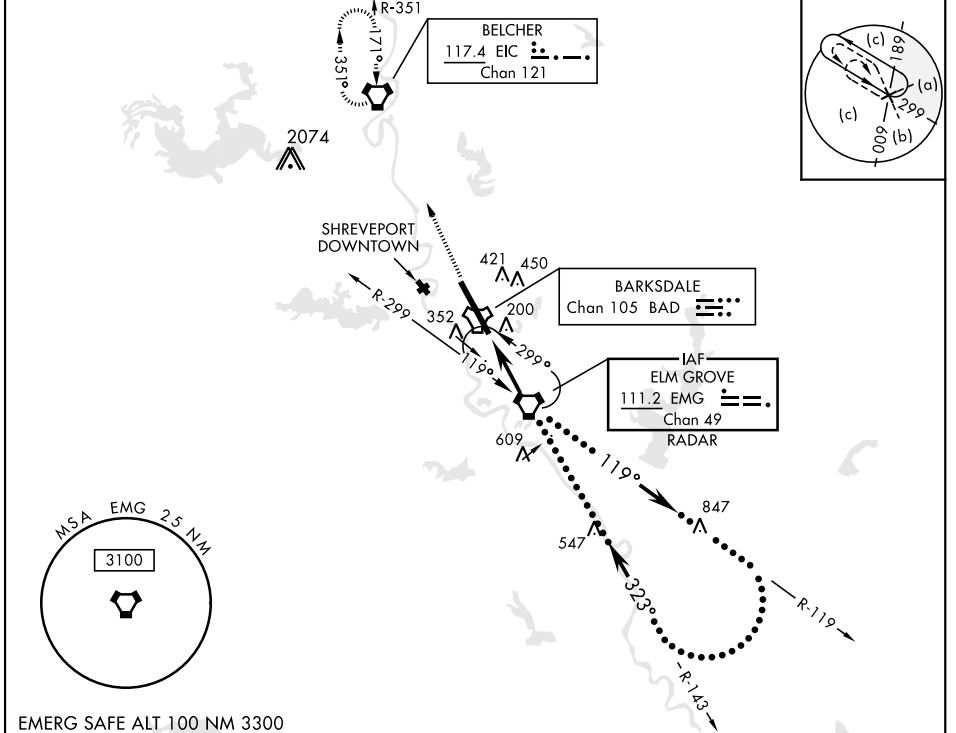
BOSSIER CITY, LOUISIANA

# HI-VOR/DME Z RWY 33

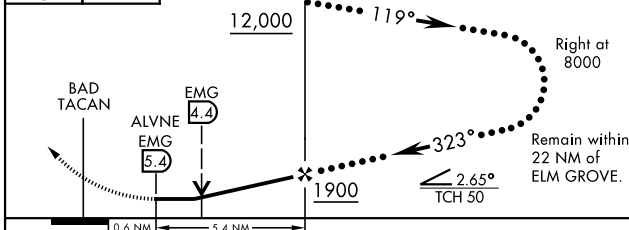
VORTAC EMG <b>111.2</b> Chan <b>49</b>	APCH CRS <b>323°</b>	Rwy Idg <b>11,758</b> THRE: <b>161</b> Arpt Elev <b>165</b>	AL-391 [USAF]	BARKSDALE AFB (KBAD)
--	-------------------------	---	---------------	----------------------

DME or RADAR required.	ALSF-1 	MISSED APPROACH: Climb to 3100 direct to EIC VORTAC and hold.
* When ALS inop, increase CAT CDE vis to 1 3/8 miles. ** Circling not authorized W of Rwy.		

ATIS <b>307.025</b>	SHREVEPORT APP CON 320°-152° <b>123.75 360.725</b> 153°-319° <b>119.9 335.55</b>	TOWER <b>128.25 278.3</b>	GND CON <b>121.8 253.5</b>	ASR
------------------------	--	------------------------------	-------------------------------	-----



3100	EIC	ELEV 165	THRE 161
------	-----	----------	----------



CATEGORY	C	D	E
S-33*	640/50	479 (500-1)	
CIRCLING**	NOT AUTHORIZED	760-2 595 (600-2)	780-2 1/4 615 (700-2 1/4)
HIRL Rwy 15-33			
FAF to MAP 5.4 NM			
Knots	120	140	160 180 200
Min:Sec	2:42	2:19	2:01 1:48 1:37

BOSSIER CITY, LOUISIANA 32°30'N-93°40'W BARKSDALE AFB (KBAD)

# HI-VOR/DME Z RWY 33

SC-4, 27 JAN 2022 to 24 FEB 2022

SC-4, 27 JAN 2022 to 24 FEB 2022