

ILS or LOC W RWY 33

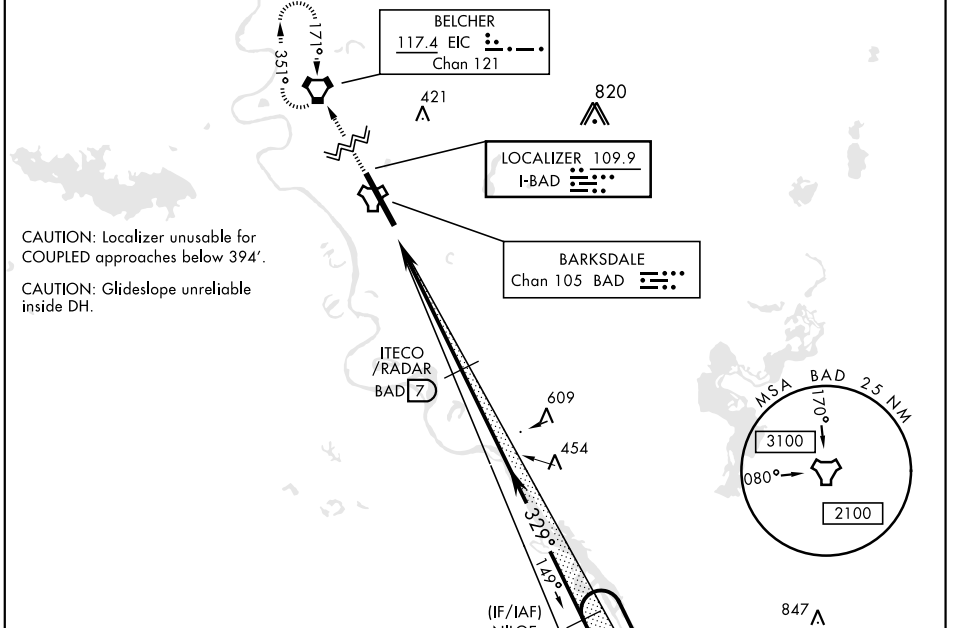
LOC I-BAD 109.9	APCH CRS 329°	Rwy Ldg 11,758 THRE 161 Arprt Elev 165	AL-391 [USAF]	BARKSDALE AFB (KBAD)
---------------------------	-------------------------	--	---------------	----------------------

* When ALS inop, increase RVR to 40 and vis to ¼ mile.
 ** When ALS inop, increase CAT AB RVR to 55 and vis to 1 mile,
 CAT CDE RVR to 60 and vis to 1 ½ miles.
 *** Circling not authorized W of Rwy.



MISSED APPROACH: Climb to 3100 direct EIC VORTAC and hold.

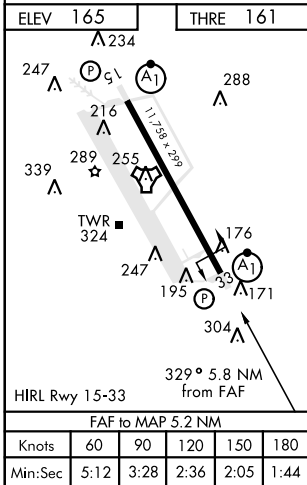
ATIS 307.025	SHREVEPORT APP CON 320°-152° 123.75 360.725 153°-319° 119.9 335.55	BARKSDALE TOWER 128.25 278.3	GND CON 121.8 253.5	ASR
------------------------	--	--	-------------------------------	-----



CAUTION: Localizer unusable for COUPLED approaches below 394'.
 CAUTION: Glideslope unreliable inside DH.

RADAR or DME REQUIRED

EMERG SAFE ALT 100 NM 3300



ELEV 165	THRE 161					
3100	EIC	↑ LOC ONLY			NILOE [17]	
TACAN	JOGAB [1.8]	ITECO/RADAR [7]	149° →			
.6 NM		5.2 NM	1800	3000	329°	
GS 2.50° TCH 49						
CATEGORY	A	B	C	D	E	
S-ILS 33 *	361/24		200	(200-½)		
S-LOC 33 **	560/24	399 (400-½)	560/35	399	(400-¾)	
CIRCLING ***	NOT AUTHORIZED			760-2 595 (600-2)	780-2 ¼ 615 (700-2 ¼)	

ILS or LOC W RWY 33

SC-4, 27 JAN 2022 to 24 FEB 2022

SC-4, 27 JAN 2022 to 24 FEB 2022