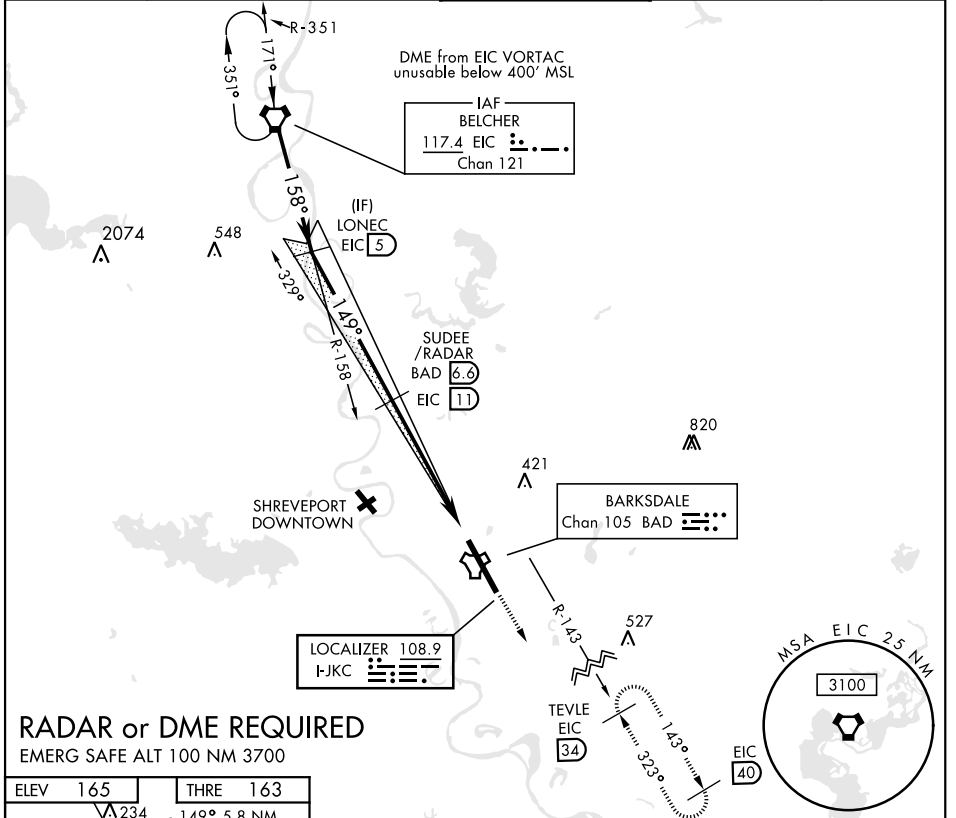


# ILS or LOC Y RWY 15

LOC I-JKC <b>108.9</b>	APCH CRS <b>149°</b>	Rwy ldg <b>11,758</b> THRE <b>163</b> Arprt Elev <b>165</b>	AL-391 [USAF]	BARKSDALE AFB (KBAD)	
* When ALS inop, increase RVR to 40 and vis to 3/4 mile. ** When ALS inop, increase CAT AB RVR to 55 and vis to 1 mile, CAT CDE vis to 1 3/8 miles. *** Circling not authorized W of Rwy.		ALSF-1 	MISSED APPROACH: Climb to 2000, then climbing left turn to join EIC VORTAC R-143 outbound direct TEVLE (EIC 34 DME) and hold, maintain 3000.		
ATIS <b>307.025</b>	SHREVEPORT APP CON 320°-152° <b>123.75 360.725</b> 153°-319° <b>119.9 335.55</b>	BARKSDALE TOWER <b>128.25 278.3</b>	GND CON <b>121.8 253.5</b>	ASR	



## RADAR or DME REQUIRED

EMERG SAFE ALT 100 NM 3700

ELEV 165	THRE 163
247	149° 5.8 NM from FAF
216	117.4 EIC 2.5 NM
289	117.4 EIC 2.5 NM
339	
TWR 324	
247	
33	
HIRL Rwy 15-33	
FAF to MAP 5.2 NM	
Knots	60 90 120 150 180
Min:Sec	5:12 3:28 2:36 2:05 1:44

EIC VORTAC 4000	Incp. lczr LONEC EIC 5	SUDEE/RADAR BAD 6.6 EIC 11	2000	EIC R-143	3000 TEVLE EIC 34
2500	GS 2.50° TCH 53	1800	FIRKU EIC 16.2	TACAN	
CATEGORY		A	B	D	E
S-ILS 15*		363/24		200	(200-1/2)
S-LOC 15**		640/24	477 (500-1/2)	640/50	477 (500-1)
*** CIRCLING		NOT AUTHORIZED		760-2	780-2 1/4
				595 (600-2)	615 (700-2 1/4)

# ILS or LOC Y RWY 15

SC-4, 27 JAN 2022 to 24 FEB 2022

SC-4, 27 JAN 2022 to 24 FEB 2022