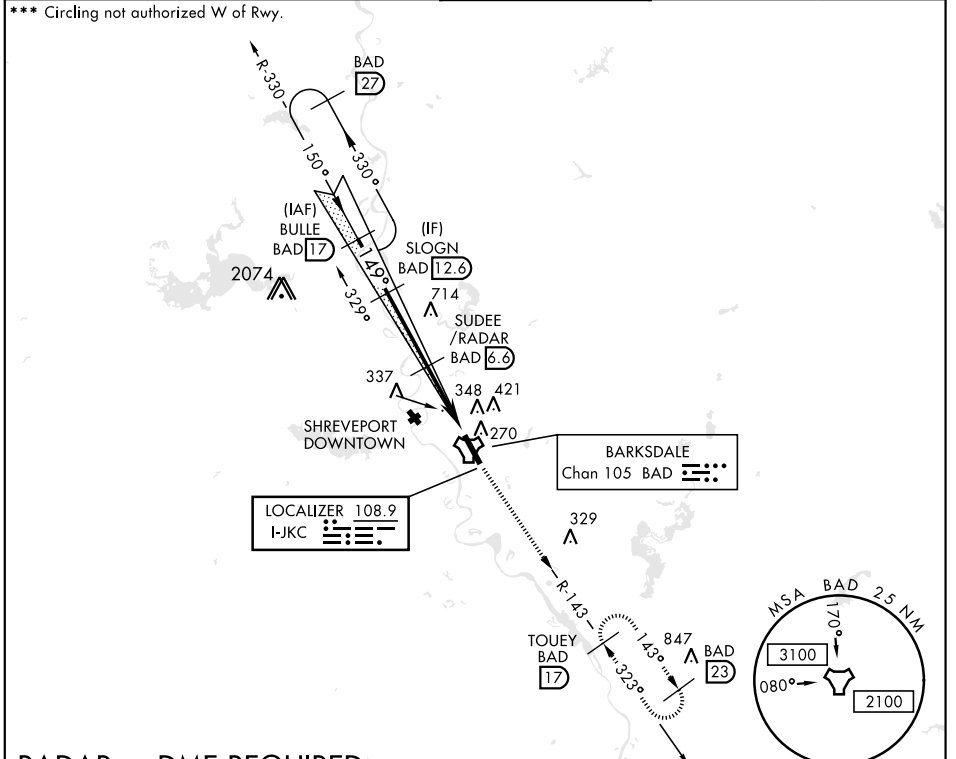


# ILS or LOC Z RWY 15

LOC I-JKC <b>108.9</b>	APCH CRS <b>149°</b>	Rwy Ldg <b>11,758</b> THRE <b>163</b> Arprt Elev <b>165</b>	AL-391 [USAF]	BARKSDALE AFB (KBAD)
* When ALS inop, increase RVR to 40 and vis to 3/4 mile. ** When ALS inop, increase CAT AB RVR to 55 and vis to 1 mile, CAT CDE vis to 1 1/8 miles.			ALSF-1 	MISSED APPROACH: Climb to 3000 via BAD R-143 direct TOUEY and hold.
ATIS <b>307.025</b>	SHREVEPORT APP CON 320°-152° <b>123.75 360.725</b> 153°-319° <b>119.9 335.55</b>	BARKSDALE TOWER <b>128.25 278.3</b>	GND CON <b>121.8 253.5</b>	ASR



SC-4, 27 JAN 2022 to 24 FEB 2022

SC-4, 27 JAN 2022 to 24 FEB 2022

## RADAR or DME REQUIRED

EMERG SAFE ALT 100 NM 3300

BULLE R-330 17	SLOGN 12.6	SUDEE /RADAR 6.6	† LOC ONLY	3000 BAD R-143	TOUEY BAD R-143 17
4000	2500	1800	149°	5.2 NM	6 NM
GS 2.50°	TCH 53	AKUYE 1.4	TACAN		
CATEGORY	A	B	C	D	E
S-ILS 15*	363/24		200	(200-1/2)	
S-LOC 15**	640/24 477 (500-1/2)		640/50 477 (500-1)		
*** CIRCLING	NOT AUTHORIZED			760-2 595 (600-2)	780-2 1/4 615 (700-2 1/4)

ELEV 165	THRE 163
HIRL Rwy 15-33	
FAF to MAP 5.2 NM	
Knots	60 90 120 150 180
Min:Sec	5:12 3:28 2:36 2:05 1:44

# ILS or LOC Z RWY 15