

TACAN Y RWY 15

TACAN BAD Chan 105	APCH CRS 158°	Rwy Ldg THRE 163 Arprt Elev 165	AL-391 [USAF]	BARKSDALE AFB (KBAD)
------------------------------	-------------------------	---	---------------	----------------------

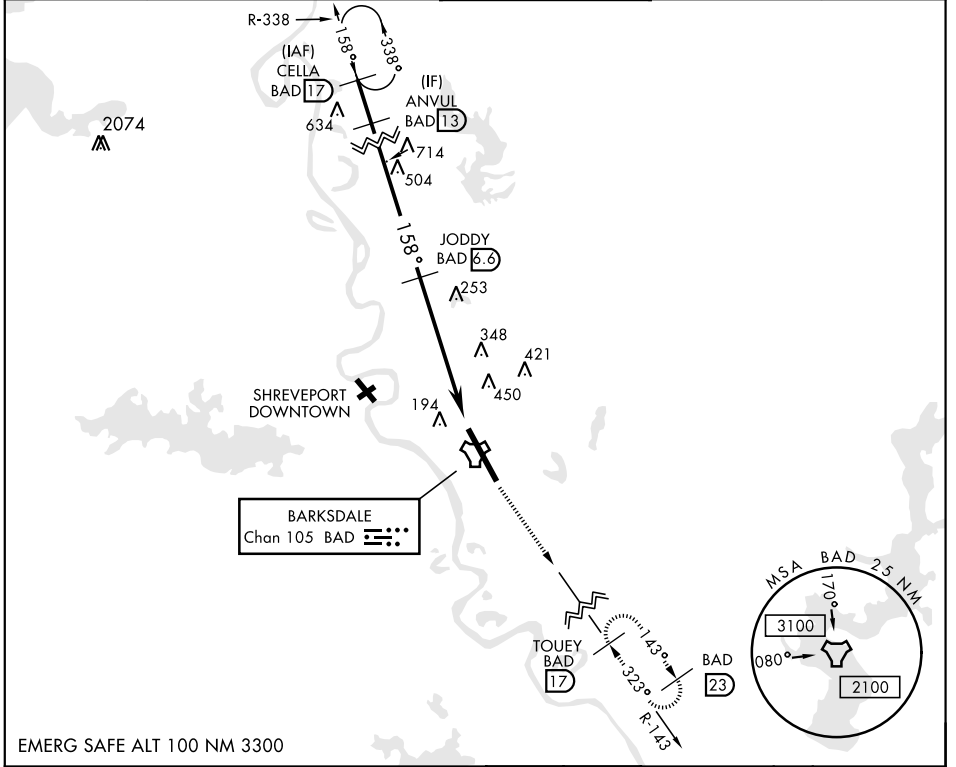
* When ALS inop, increase CAT AB RVR to 55 and vis to 1 mile
CAT CDE vis to 1 3/8 miles

** Circling not authorized W of Rwy.

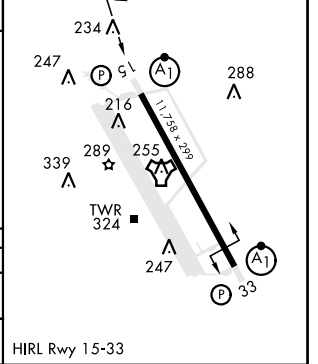
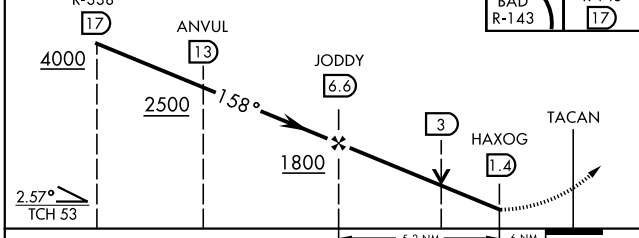
ALSF-1

MISSED APPROACH: Climb to 3000 via
BAD R-143 direct TOUEY and hold.

ATIS 307.025	SHREVEPORT APP CON 320°-152° 123.75 360.725 153°-319° 119.9 335.55	BARKSDALE TOWER 128.25 278.3	GND CON 121.8 253.5	ASR
------------------------	--	--	-------------------------------	-----



EMERG SAFE ALT 100 NM 3300	3000 BAD R-143	TOUEY BAD R-143	ELEV 165	THRE 163
----------------------------	-------------------	--------------------	----------	----------



CATEGORY	A	B	C	D	E
S-15 *	800/24	637 (700-1/2)	800-1 3/8	637 (700-1 3/8)	
CIRCLING **	NOT AUTHORIZED			800-2 635 (700-2)	800-2 1/4 635 (700-2 1/4)

HIRL Rwy 15-33

TACAN Y RWY 15

SC-4, 27 JAN 2022 to 24 FEB 2022

SC-4, 27 JAN 2022 to 24 FEB 2022