

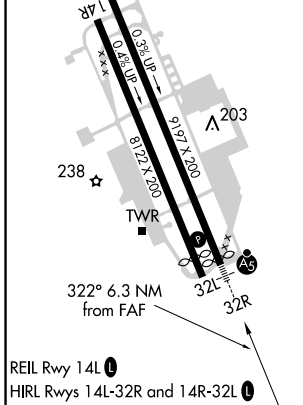
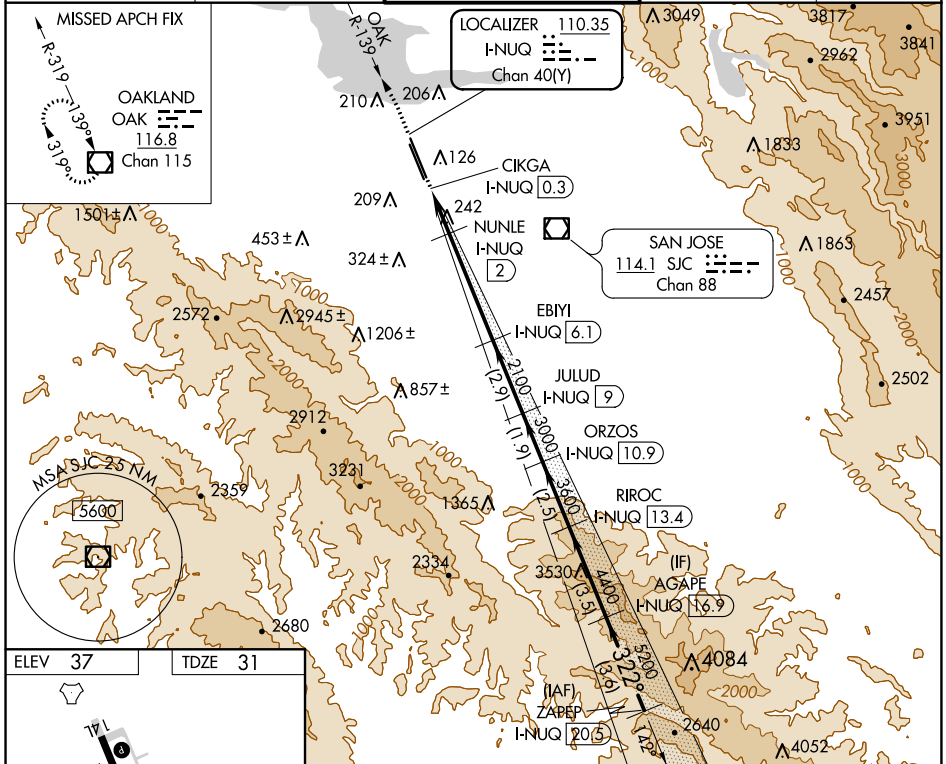
LOC/DME I-NUQ 110.35 Chan 40(Y)	APP CRS 322°	Rwy ldg TDZE Apt Elev	9006 31 37
--	------------------------	-----------------------------	---------------------------------------

ILS or LOC RWY 32R

MOFFETT FEDERAL AIRFIELD (NUQ)

DME required. RADAR required for procedure entry.		MALSR 	MISSED APPROACH: Climb to 600 then climbing left turn to 4000 on heading 310° and on OAK VOR/DME R-139 to OAK VOR/DME and hold.
 For inop ALS, increase S-ILS 32R Cat E visibility to ¾ SM and S-LOC 32R Cat C/D/E to 1¾ SM.			

ATIS 124.175 283.0	NORCAL APP CON 120.1 290.25	MOFFETT TOWER ★ 119.550 (CTAF) 259.65	GND CON 121.85 278.95	CLNC DEL 296.75
------------------------------	---------------------------------------	---	---------------------------------	---------------------------



ELEV 37	TDZE 31	OAK R-139		OAK		JULUD I-NUQ 9		ORZOS I-NUQ 10.9		RIROC I-NUQ 13.4		AGAPE I-NUQ 16.9		ZAPEP I-NUQ 20.5			
 MISSED APCH FIX OAKLAND OAK 116.8 Chan 115 R-139 319° 319°		 LOCALIZER 110.35 I-NUQ --- Chan 40(Y) SAN JOSE 114.1 SJC Chan 88		CIKGA I-NUQ 0.3 NUNLE I-NUQ 2		EBIMI I-NUQ 6.1 JULUD I-NUQ 9		ORZOS I-NUQ 10.9 RIROC I-NUQ 13.4		AGAPE I-NUQ 16.9 ZAPEP I-NUQ 20.5		600 4000 hdg 310°		322° 5500 5200 4400 3600 3000 2100 780*		GS 3.00° TCH 57	

CATEGORY	A	B	C	D	E
S-ILS 32R	231-½ 200 (200-½)				
S-LOC 32R	500-½ 469 (500-½)	500-1 469 (500-1)			
CIRCLING	540-1 503 (600-1)	600-1 563 (600-1)	620-1½ 583 (600-1½)	780-2½ 743 (800-2½)	940-3 903 (1000-3)

SW-2, 27 JAN 2022 to 24 FEB 2022

SW-2, 27 JAN 2022 to 24 FEB 2022