

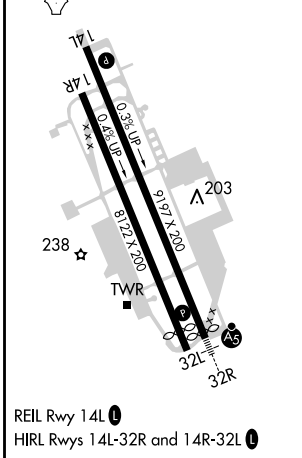
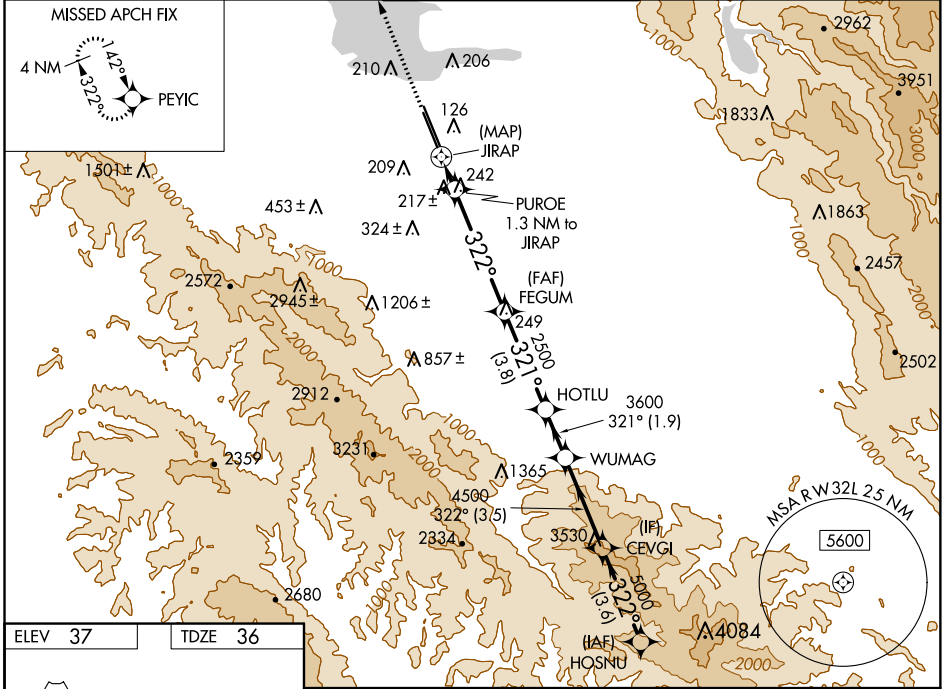
WAAS CH 50242 W32A	APP CRS 322°	Rwy Idg TDZE Apt Elev	7520 36 37
--	------------------------	-----------------------------	---------------------------------------

RNAV (GPS) RWY 32L

MOFFETT FEDERAL AIRFIELD (NUQ)

RNP APCH.	MISSED APPROACH: Climb to 3200 direct PEYIC and hold.		
Rwy 32L helicopter visibility reduction below 3/4 SM NA. For uncompensated Baro-VNAV systems, LNAV/VNAV NA below 0°C or above 47°C.			

ATIS 124.175 283.0	NORCAL APP CON 120.1 290.25	MOFFETT TOWER ★ 119.55 (CTAF) 259.65	GND CON 121.85 278.95	CLNC DEL 296.75
------------------------------	---------------------------------------	---	---------------------------------	---------------------------



ELEV 37	TDZE 36	<table border="1"> <tr> <td>3200</td> <td>PEYIC</td> <td colspan="3">HOSNU</td> </tr> <tr> <td>↑</td> <td>✦</td> <td colspan="3"></td> </tr> <tr> <td colspan="5">* LNAV only</td> </tr> <tr> <td>JIRAP</td> <td>PUROE 1.3 NM to JIRAP</td> <td>FEGUM 2500</td> <td>HOTLU 3600</td> <td>WUMAG 4500</td> <td>CEVGI 5000</td> <td>HOSNU 5500</td> </tr> <tr> <td>322°</td> <td>322°</td> <td>321°</td> <td>321°</td> <td>322°</td> <td>322°</td> <td>322°</td> </tr> <tr> <td>0.5</td> <td>1.3</td> <td>4.7 NM</td> <td>3.8 NM</td> <td>1.9 NM</td> <td>3.5 NM</td> <td>3.6 NM</td> </tr> </table>				3200	PEYIC	HOSNU			↑	✦				* LNAV only					JIRAP	PUROE 1.3 NM to JIRAP	FEGUM 2500	HOTLU 3600	WUMAG 4500	CEVGI 5000	HOSNU 5500	322°	322°	321°	321°	322°	322°	322°	0.5	1.3	4.7 NM	3.8 NM	1.9 NM	3.5 NM	3.6 NM
3200	PEYIC	HOSNU																																							
↑	✦																																								
* LNAV only																																									
JIRAP	PUROE 1.3 NM to JIRAP	FEGUM 2500	HOTLU 3600	WUMAG 4500	CEVGI 5000	HOSNU 5500																																			
322°	322°	321°	321°	322°	322°	322°																																			
0.5	1.3	4.7 NM	3.8 NM	1.9 NM	3.5 NM	3.6 NM																																			
GP 3.50° TCH 55																																									
CATEGORY	A	B	C		D																																				
LPV DA	337-7/8 301 (300-7/8)																																								
LNAV/VNAV DA	421-1 1/8 385 (400-1 1/8)																																								
LNAV MDA	480-1 444 (500-1)			480-1 3/8 444 (500-1 3/8)																																					
CIRCLING	540-1 503 (600-1)	600-1 563 (600-1)	620-1 1/2 583 (600-1 1/2)		780-2 1/4 743 (800-2 1/4)																																				

SW-2, 27 JAN 2022 to 24 FEB 2022

SW-2, 27 JAN 2022 to 24 FEB 2022