

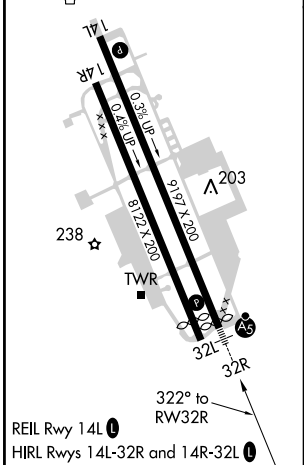
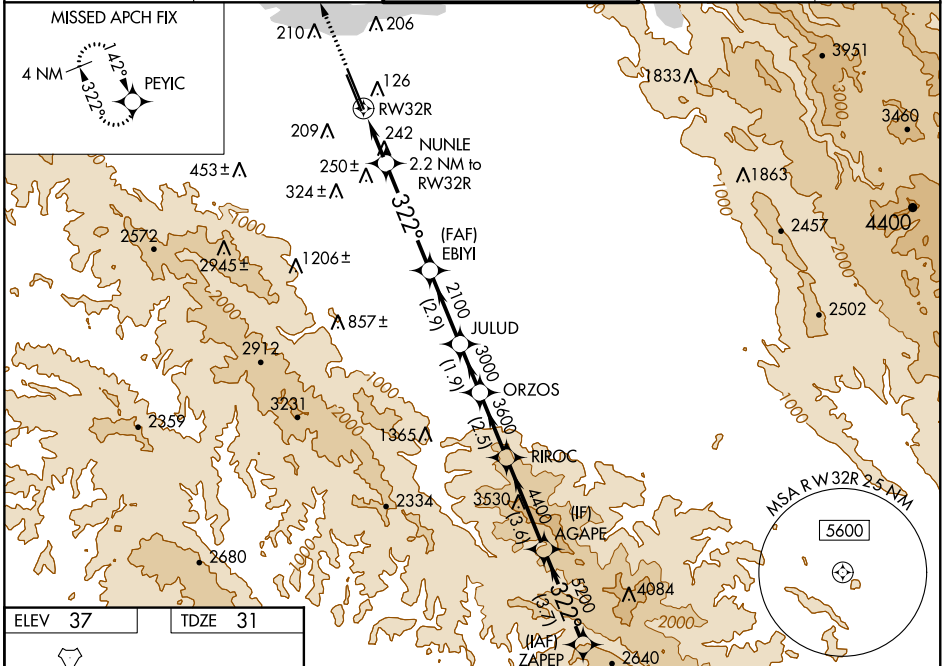
WAAS CH 53343 W32B	APP CRS 322°	Rwy Idg TDZE Apt Elev	9006 31 37
--	------------------------	-----------------------------	---------------------------------------

RNAV (GPS) RWY 32R

MOFFETT FEDERAL AIRFIELD (NUQ)

RNP APCH-GPS.	MALSR 	MISSED APPROACH: Climb to 3200 direct PEYIC and hold.
<p>▽ For uncompensated Baro-VNAV systems, LNAV/VNAV NA below 0°C or above 54°C. For inop ALS, increase LNAV/VNAV all Cats visibility to 1½ SM and LNAV Cat C/D visibility to 1½ SM.</p>		

ATIS 124.175 283.0	NORCAL APP CON 120.1 290.25	MOFFETT TOWER ★ 119.55 0 (CTAF) 259.65	GND CON 121.85 278.95	CLNC DEL 296.75
------------------------------	---------------------------------------	--	---------------------------------	---------------------------



3200 PEYIC	NUNLE 2.2 NM to RWY 32R	EBIYI 2100	JULUD 3000	ORZOS 3600	RIROC 4400	AGAPE 5200	ZAPEP 5500
1.3	0.9	4.1 NM	2.9 NM	1.9 NM	2.5 NM	3.6 NM	3.7 NM
CATEGORY	A	B	C	D			
LPV DA	231-½		200 (200-½)				
LNAV/VNAV DA	442-¾		411 (500-¾)				
LNAV MDA	500-½		469 (500-½)		500-1		469 (500-1)
C CIRCLING	540-1 503 (600-1)	600-1 563 (600-1)	620-1½ 583 (600-1½)	780-2½ 743 (800-2½)			

SW-2, 27 JAN 2022 to 24 FEB 2022

SW-2, 27 JAN 2022 to 24 FEB 2022