

TACAN NUG Chan <b>123</b> <b>(117.6)</b>	APP CRS <b>321°</b>	Rwy Idg TDZE Apt Elev	<b>7520</b> <b>36</b> <b>37</b>
--	------------------------	-----------------------------	---------------------------------------

# TACAN RWY 32L

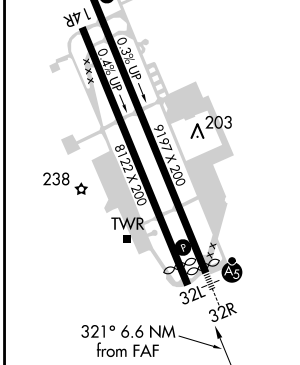
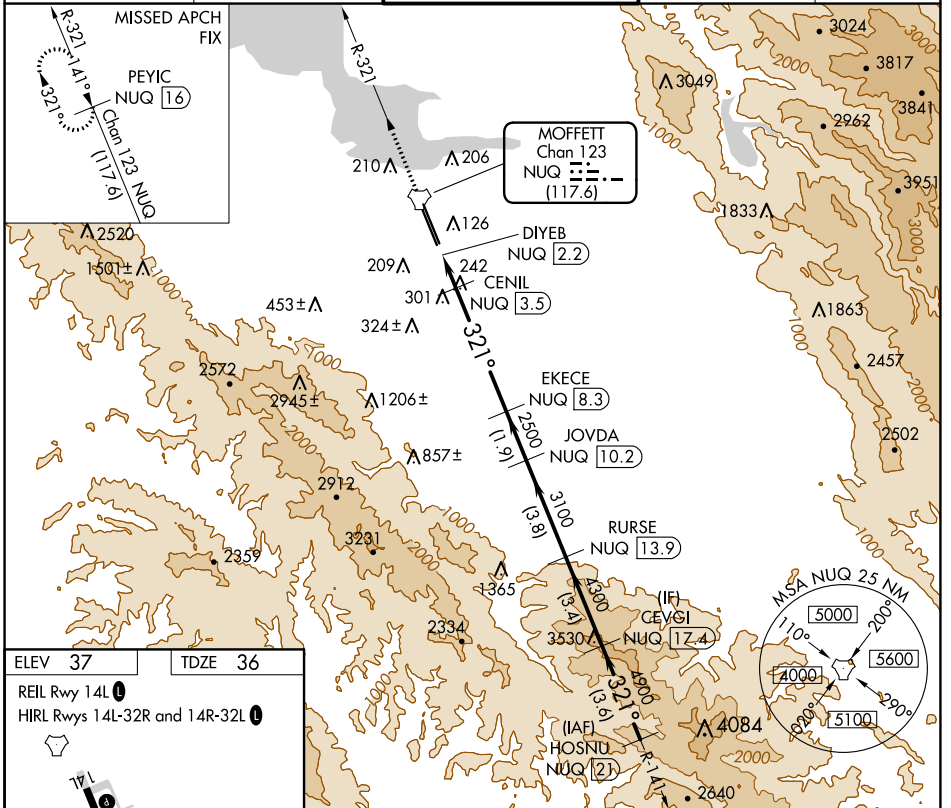
MOFFETT FEDERAL AIRFIELD (NUQ)

RADAR required for procedure entry.

▼ Rwy 32L helicopter visibility reduction below 3/4 SM NA.

MISSED APPROACH: Climb to 3200 on NUQ TACAN R-321 to PEYIC/16 DME and hold.

ATIS <b>124.175 283.0</b>	NORCAL APP CON <b>120.1 290.25</b>	MOFFETT TOWER ★ <b>119.55 (CTAF) 259.65</b>	GND CON <b>121.85 278.95</b>	CLNC DEL <b>296.75</b>
------------------------------	---------------------------------------	--	---------------------------------	---------------------------



3200	PEYIC NUQ R-321 16	CENIL NUQ 3.5	EKECE NUQ 8.3	JOVDA NUQ 10.2	RURSE NUQ 13.9	CEVGI NUQ 17.4	HOSNU NUQ 21		
	DIYEB NUQ 2.2								
			3.45° TCH 55						
			720	2500	3100	4300	5500		
	0.5	0.8	0.5	4.8 NM	1.9 NM	3.8 NM	3.4 NM	3.6 NM	
CATEGORY	A		B		C		D		E
S-32L	560-1 524 (600-1)		560-1½ 524 (600-1½)		560-1½ 524 (600-1½)		560-1½ 524 (600-1½)		940-3
CIRCLING	560-1 523 (600-1)	600-1 563 (600-1)	620-1½ 583 (600-1½)	780-2½ 743 (800-2½)	940-3 903 (1000-3)				

SW-2, 27 JAN 2022 to 24 FEB 2022

SW-2, 27 JAN 2022 to 24 FEB 2022