

WAAS CH <b>49122</b> <b>W32A</b>	APP CRS <b>323°</b>	Rwy Idg TDZE Apt Elev	<b>5056</b> <b>716</b> <b>716</b>
--	------------------------	-----------------------------	---

# RNAV (GPS) RWY 32

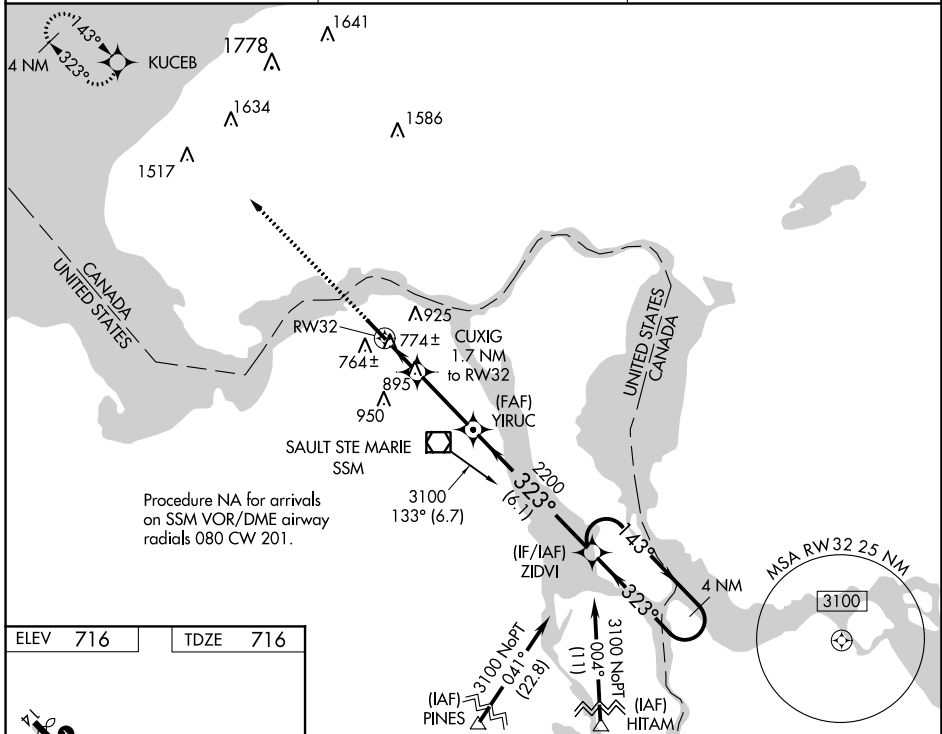
SAULT STE MARIE MUNI/SANDERSON FLD (A.NJ)

RNP APCH.

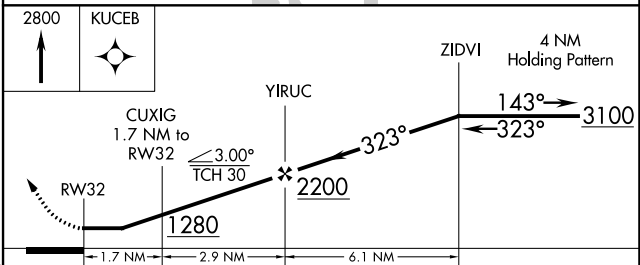
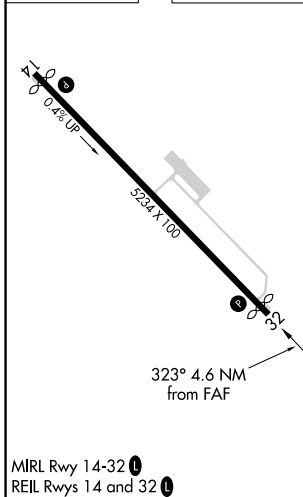
**▼** Rwy 32 helicopter visibility reduction below 3/4 SM NA. When local altimeter setting not received, use Chippewa County Intl altimeter setting and increase all MDA 60 feet, and increase LP Cat C visibility 1/8 mile and LNAV Cat C visibility 1/4 mile.

**▲** MISSED APPROACH: Climb to 2800 direct KUCEB and hold.

ASOS <b>118.375</b>	TORONTO CENTER <b>132.65 344.5</b>	UNICOM <b>122.7 (CTAF) 0</b>
------------------------	---------------------------------------	---------------------------------



ELEV 716	TDZE 716
----------	----------



CATEGORY	A	B	C	D
LP MDA	1040-1 324 (400-1)			NA
LNAV MDA	1200-1	484 (500-1)	1200-1 <sup>3</sup> / <sub>8</sub> 484 (500-1 <sup>3</sup> / <sub>8</sub> )	NA
CIRCLING	1280-1	564 (600-1)	1320-1 <sup>3</sup> / <sub>4</sub> 604 (700-1 <sup>3</sup> / <sub>4</sub> )	NA

EC-1, 27 JAN 2022 to 24 FEB 2022

EC-1, 27 JAN 2022 to 24 FEB 2022