

WAAS CH 97435 W17A	APP CRS 171°	Rwy Idg TDZE Apt Elev	6400 3991 3991
--	------------------------	-----------------------------	---

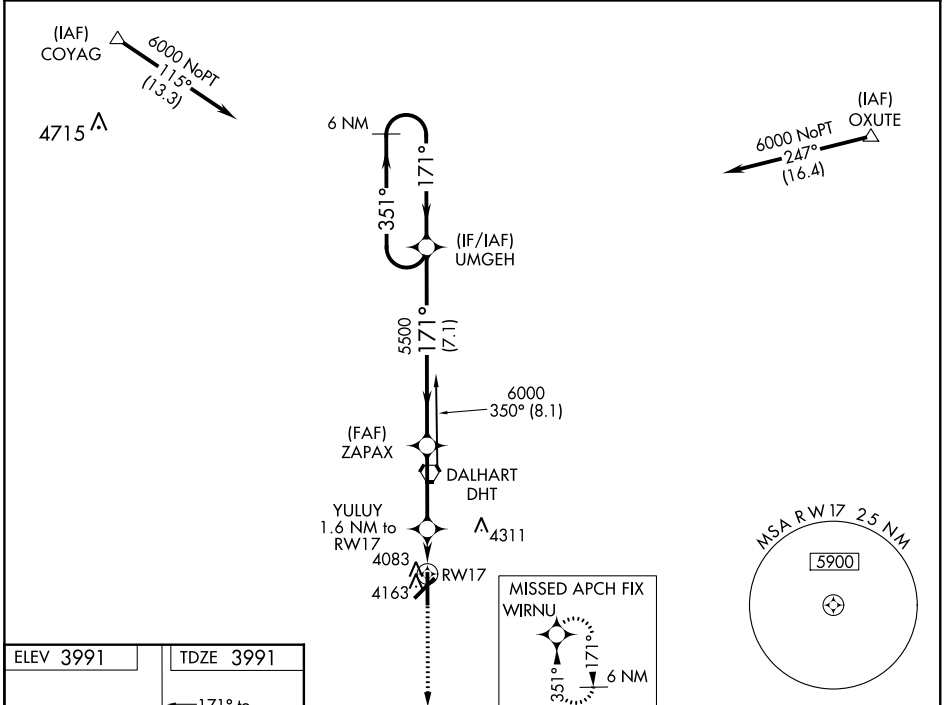
RNAV (GPS) RWY 17

DALHART MUNI (DHT)

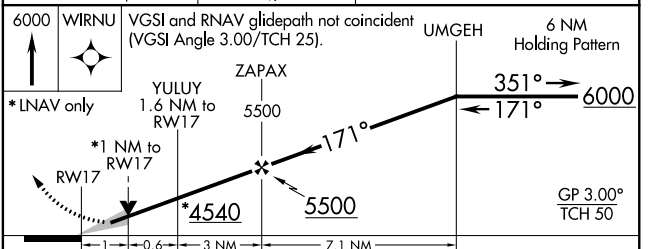
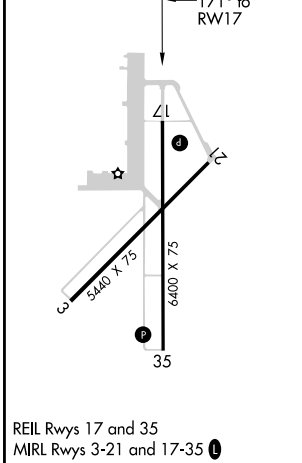
⚠ For uncompensated Baro-VNAV systems, LNAV/VNAV NA below -16°C (4°F) or above 51°C (124°F). Circling NA west of Rwy 17-35. DME/DME RNP-0.3 NA.

MISSED APPROACH: Climb to 6000 direct WIRNU and hold.

ASOS 134.075	ALBUQUERQUE CENTER 127.85 285.475	UNICOM 122.95 (CTAF) 0
------------------------	---	----------------------------------



ELEV 3991	TDZE 3991
-----------	-----------



CATEGORY	A	B	C	D
LPV DA		4241- ³ / ₄	250 (300- ³ / ₄)	
LNAV/VNAV DA		4270- ⁷ / ₈	279 (300- ⁷ / ₈)	
LNAV MDA		4340-1	349 (400-1)	
C CIRCLING	4380-1 389 (400-1)	4660-1 669 (700-1)	4660-1 ³ / ₄ 669 (700-1 ³ / ₄)	4660-2 669 (700-2)

DALHART, TEXAS
Orig-A 02APR15

36°01'N-102°33'W

DALHART MUNI (DHT)

RNAV (GPS) RWY 17

SC-2, 27 JAN 2022 to 24 FEB 2022

SC-2, 27 JAN 2022 to 24 FEB 2022