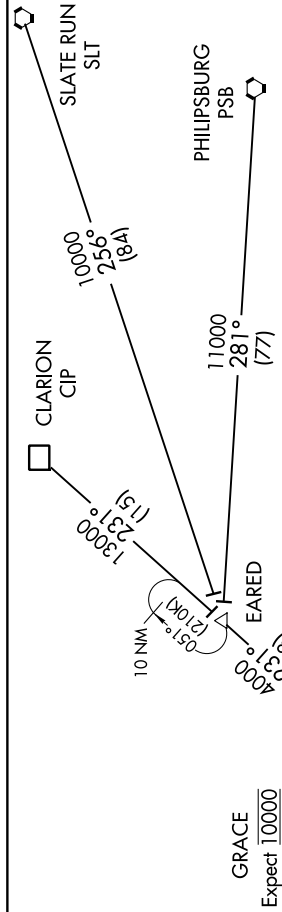


# HAYNZ SEVEN ARRIVAL (RNAV)

NE-4, 27 JAN 2022 to 24 FEB 2022

PITTSBURGH APP CON  
123.95 336.2  
D-ATIS  
127.25



**ARRIVAL ROUTE DESCRIPTION**

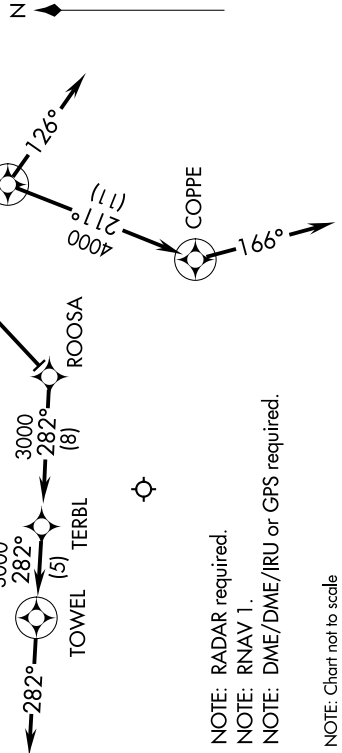
**CLARION TRANSITION (CIP.HAYNZ7):**  
**PHILIPSBURG TRANSITION (PSB.HAYNZ7):**  
**SLATE RUN TRANSITION (SLT.HAYNZ7):**

From GRACE on track 201° to HAYNZ, thence on assigned runway transition.

**LANDING RUNWAYS 10L/10C/10R:** From HAYNZ on track 236° to ROOSA, then on track 282° to TERBL, then on track 282° to TOWEL, then on heading 282°. Expect radar vectors to final approach course.

**LANDING RUNWAYS 28L/28C/28R:** From HAYNZ on track 201° to MYRON, then on heading 126°. Expect radar vectors to final approach course.

**LANDING RUNWAY 32:** From HAYNZ on track 201° to MYRON, then on track 211° to COPPE, then on heading 166°. Expect radar vectors to final approach course.



NOTE: RADAR required.  
 NOTE: RNAV 1.  
 NOTE: DME/DME/IRU or GPS required.  
 NOTE: Chart not to scale

# HAYNZ SEVEN ARRIVAL (RNAV)

NE-4, 27 JAN 2022 to 24 FEB 2022