

LOC I-GUT	APP CRS	Rwy Idg	10R	10C
<b>108.9</b>	<b>101°</b>		<b>11492</b>	<b>9707</b>
		TDZE	<b>1135</b>	<b>1141</b>
		Apt Elev	<b>1203</b>	<b>1203</b>

# ILS or LOC RWY 10R

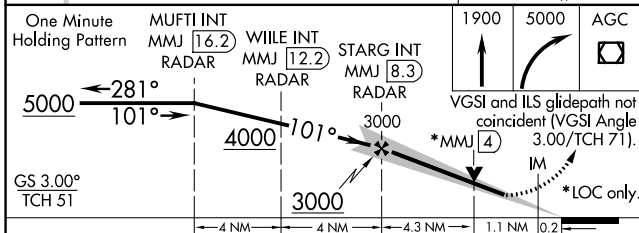
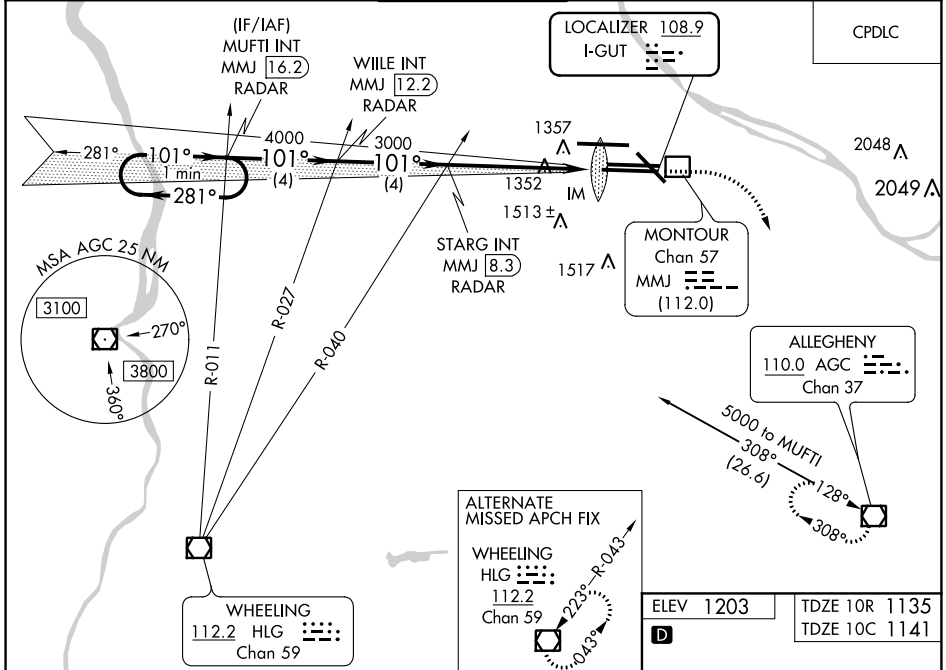
PITTSBURGH INTL (PIT)

**⚠** Simultaneous approach authorized with Rwy 10L. For inop ALS, increase S-ILS 10R Cat E visibility to RVR 4000. For inop ALS, increase S-LOC 10R Cat C, D, E visibility to 1 3/8 SM.

**ALS-F-2**

**MISSED APPROACH:** Climb to 1900 then dimbing right turn to 5000 direct AGC VOR/DME and hold, continue climb-in-hold to 5000.

D-ATIS ARR <b>127.25</b> DEP <b>135.9</b>	PITTSBURGH APP CON <b>123.95 360.8</b>	PITTSBURGH TOWER <b>128.3 291.7</b>	GND CON SOUTH <b>121.9 348.6</b> NORTH <b>127.8 348.6</b>	CLNC DEL <b>126.75 353.7</b>
---	---	--	---	---------------------------------



CATEGORY	A	B	C	D	E
S-ILS 10R	1335/18 200 (200-1/2)			1335/24 200 (200-1/2)	
S-LOC 10R	1620/24	485 (500-1/2)	1620/50 485 (500-1)		1620/60 485 (500-1 1/4)
SIDESTEP 10C	1620/50	479 (500-1)	1620-1 1/2 479 (500-1 1/2)	1620-2 479 (500-2)	1620-2 1/4 479 (500-2 1/4)
<b>C</b> CIRCLING	1700-1	497 (500-1)	1880-2 677 (700-2)	1880-2 1/4 677 (700-2 1/4)	1880-2 1/2 677 (700-2 1/2)

**ELEV 1203** | **TDZE 10R 1135**  
**TDZE 10C 1141**

**D**

101° 5.6 NM from FAF

REIL Rwy 10C  
HIRL all Rwys  
TDZ/CL Rwys 10L, 10R, 28L, 28R, 28C, and 32

FAF to MAP 5.6 NM

Knots	60	90	120	150	180
Min:Sec	5:36	3:44	2:48	2:14	1:52

NE-4, 27 JAN 2022 to 24 FEB 2022

NE-4, 27 JAN 2022 to 24 FEB 2022