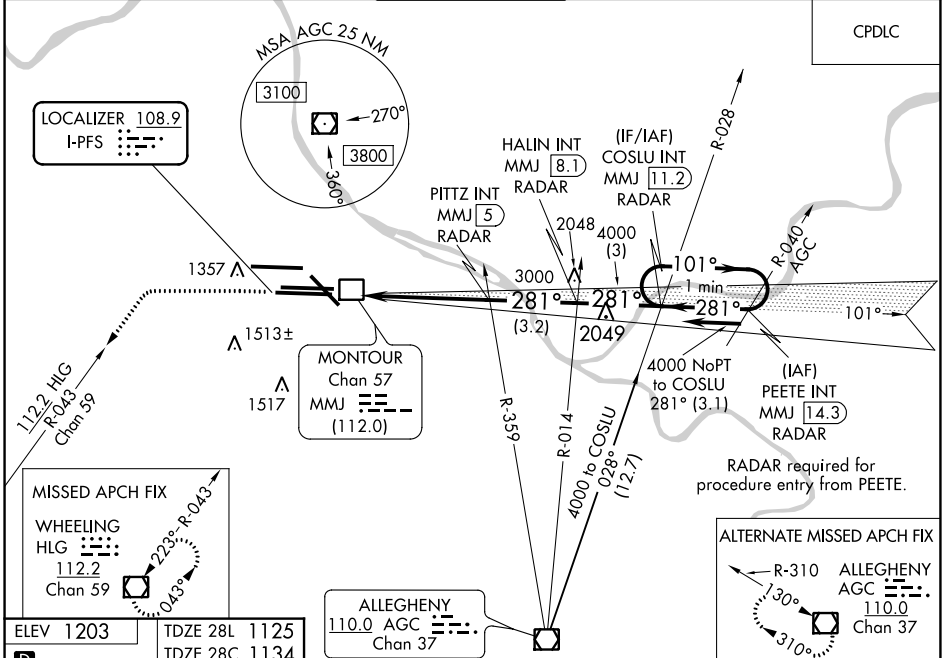


LOC I-PFS 108.9	APP CRS 281°	Rwy ldg 28L	28C
		TDZE 11500 1134	
		Apt Elev 1203 1203	

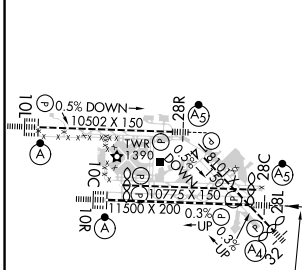
ILS or LOC RWY 28L

PITTSBURGH INTL (PIT)

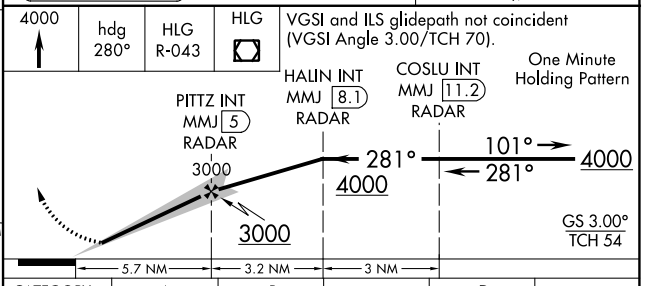
<p>Simultaneous approach authorized. For inop ALS, increase S-ILS 28L Cat E visibility to RVR 4000 and S-LOC 28L Cats C, D, E visibility to 1 1/2 SM. DME from MMJ DME. Simultaneous reception of I-PFS and MMJ DME required.</p>	<p>MALS R</p>	MISSED APPROACH: Climb to 4000 on heading 280° and HLG VOR/DME R-043 to HLG VOR/DME and hold.		
		D-ATIS ARR 127.25 DEP 135.9	PITTSBURGH APP CON 123.95 360.8	PITTSBURGH TOWER 128.3 291.7



ELEV 1203	TDZE 28L 1125
D	TDZE 28C 1134



FAF to MAP 5.7 NM					
Knots	60	90	120	150	180
Min:Sec	5:42	3:48	2:51	2:17	1:54



CATEGORY	A	B	C	D	E
S-ILS 28L	1325/18		200 (200-1/2)		
S-LOC 28L	1700/24	575 (600-1/2)	1700-1 1/4		575 (600-1 1/4)
SIDESTEP 28C	1700-1	566 (600-1)	1700-1 1/2 566 (600-1 1/2)	1700-2 566 (600-2)	
C CIRCLING	1700-1 497 (500-1)		1880-2 677 (700-2)	1880-2 1/4 677 (700-2 1/4)	1880-2 1/2 677 (700-2 1/2)

NE-4, 27 JAN 2022 to 24 FEB 2022

NE-4, 27 JAN 2022 to 24 FEB 2022