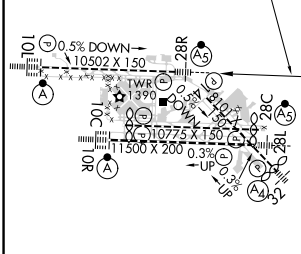
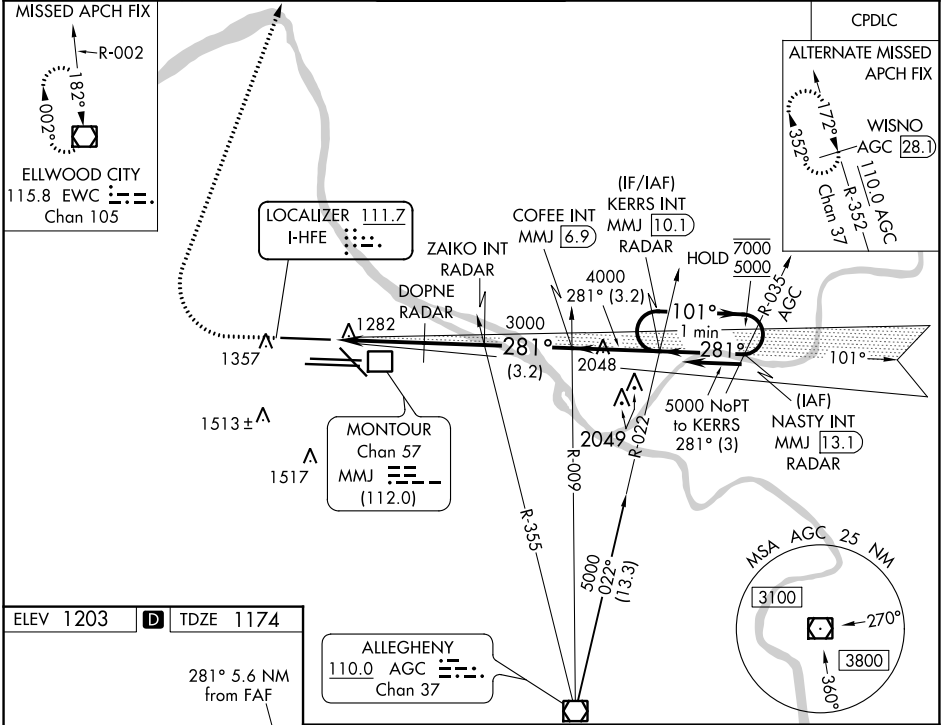


LOC I-HFE 111.7	APP CRS 281°	Rwy ldg 10102
		TDZE 1174
		Apt Elev 1203

ILS or LOC RWY 28R

PITTSBURGH INTL (PIT)

From NASTY: Radar required for procedure entry. Radar required for LOC only.		MALSR	MISSED APPROACH: Climb to 1800 then climbing right turn to 5000 direct EWC VOR/DME and hold.	
<p>Simultaneous approach authorized. For inop ALS, increase S-ILS 28R Cat E visibility to RVR 4000 and S-LOC 28R Cats C/D/E visibility to RVR 5500. DME from MMJ DME. Simultaneous reception of I-HFE and MMJ DME required.</p>		AS		
D-ATIS ARR 127.25 DEP 135.9	PITTSBURGH APP CON 123.95 360.8	PITTSBURGH TOWER 128.3 291.7	GND CON SOUTH 121.9 348.6 NORTH 127.8 348.6	CLNC DEL 126.75 353.7



ELEV 1203	TDZE 1174
281° 5.6 NM from FAF	
REIL Rwy 10C HIRL all Rwys TDZ/CL Rwys 10L, 10R, 28L, 28R, 28C, and 32	
FAF to MAP 5.6 NM	
Knots	60 90 120 150 180
Min:Sec	5:36 3:44 2:48 2:14 1:52

1800	5000	EWC	VGSI and ILS glidepath not coincident (VGSI Angle 3.00/TCH 71).
*LOC only.			One Minute Holding Pattern
ZAIKO INT RADAR	COFFEE INT MMJ 6.9	KERRS INT MMJ 10.1	
DOPNE RADAR	3000	4000	7000
*2300		3000	GS 3.00° TCH 55
-3.4 NM		-2.2 NM	-3.2 NM

CATEGORY	A	B	C	D	E
S-ILS 28R	1374/18 200 (200-½)				
S-LOC 28R	1540/24	366 (400-½)	1540/35 366 (400-¾)		
CIRCLING	1700-1	497 (500-1)	1880-2 677 (700-2)	1880-2¼ 677 (700-2¼)	1880-2½ 677 (700-2½)

NE-4, 27 JAN 2022 to 24 FEB 2022

NE-4, 27 JAN 2022 to 24 FEB 2022