

LOC/DME I-TQW 111.3 Chan 50	APP CRS 325°	Rwy Idg 7466 TDZE 1124 Apt Elev 1203
-------------------------------------------------	------------------------	-----------------------------------------------------------------

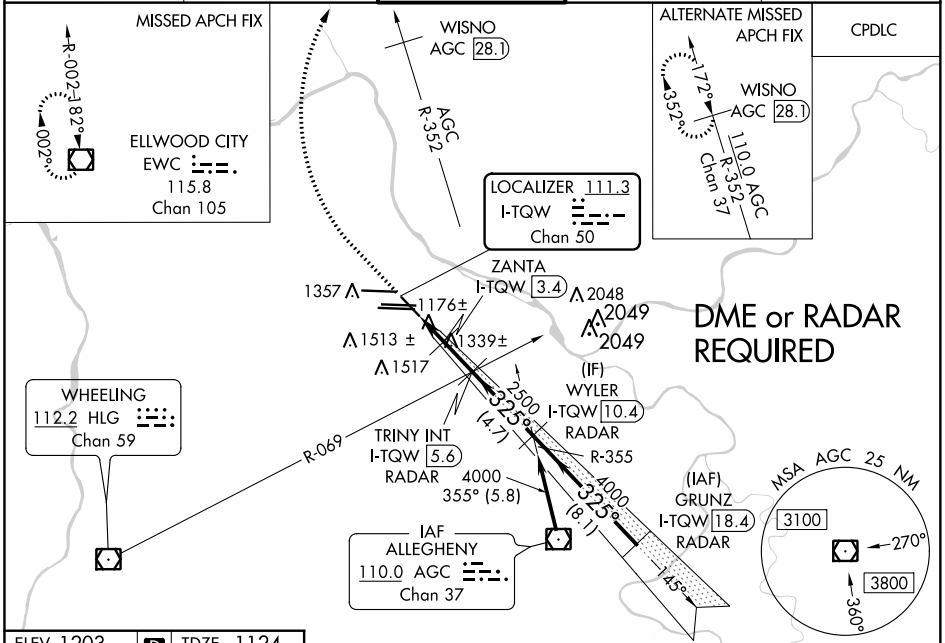
ILS or LOC RWY 32

PITTSBURGH INTL (PIT)

⚠ DME or RADAR required. Inop table does not apply to S-ILS 32. For inop ALS, increase S-LOC 32 Cat E visibility to 1 3/4 SM and ZANTA fix minimums S-LOC 32 Cat E visibility to RVR 6000.

MALS MISSED APPROACH: Climb to 1800 then climbing right turn to 4000 direct EWC VOR/DME and hold.

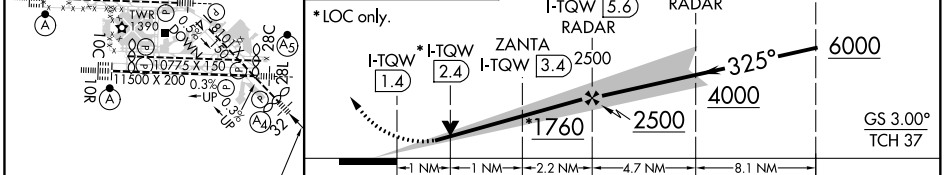
D-ATIS ARR 127.25 DEP 135.9	PITTSBURGH APP CON 123.95 360.8	PITTSBURGH TOWER 128.3 291.7	GND CON SOUTH 121.9 348.6 NORTH 127.8 348.6	CLNC DEL 126.75 353.7
-------------------------------------------------	-------------------------------------------	----------------------------------------	-----------------------------------------------------------------	---------------------------------



NE-4, 27 JAN 2022 to 24 FEB 2022

NE-4, 27 JAN 2022 to 24 FEB 2022

ELEV 1203	D TDZE 1124	1800	4000	EWC	VGSI and ILS glidepath not coincident (VGSI Angle 3.00/TCH 72).
-----------	--------------------	------	------	-----	-----------------------------------------------------------------



CATEGORY	A	B	C	D	E
S-ILS 32	1324/40 200 (200-3/4)				
S-LOC 32	1760/40	636 (600-3/4)	1760-1 1/2	636 (600-1 1/2)	
C CIRCLING	1760-1	557 (600-1)	1880-2 677 (700-2)	1880-2 1/4 677 (700-2 1/4)	1880-2 1/2 677 (700-2 1/2)
ZANTA FIX MINIMUMS (DME REQUIRED)					
S-LOC 32	1520/40	396 (400-3/4)	1520/45 396 (400-3/4)		
C CIRCLING	1700-1	497 (500-1)	1880-2 677 (700-2)	1880-2 1/4 677 (700-2 1/4)	1880-2 1/2 677 (700-2 1/2)