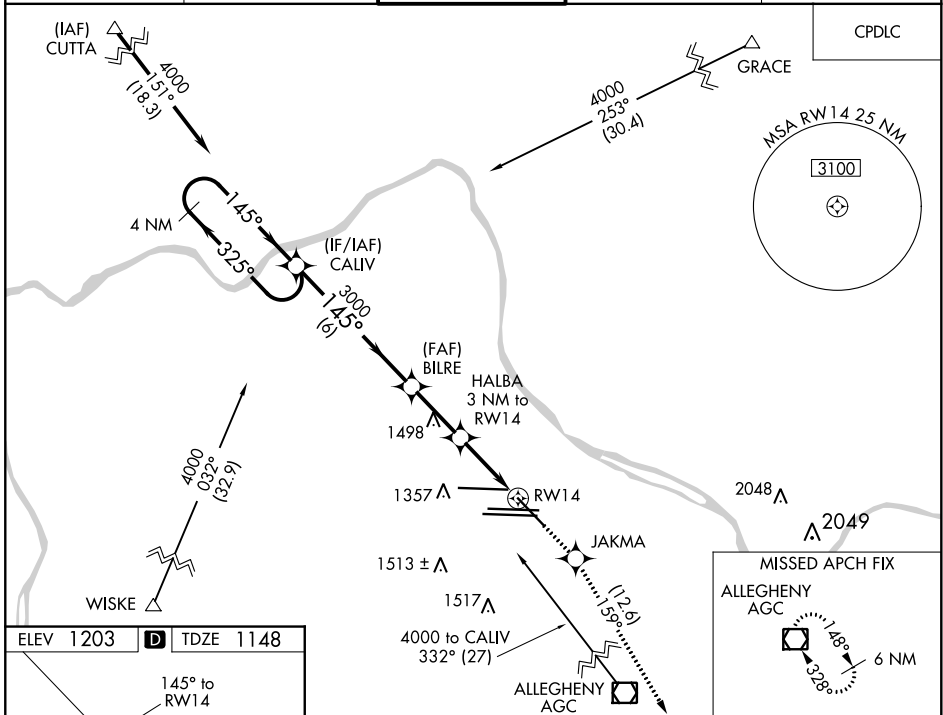


WAAS CH <b>77526</b> <b>W14A</b>	APP CRS <b>145°</b>	Rwy Idg TDZE Apt Elev	<b>7366</b> <b>1148</b> <b>1203</b>
--	------------------------	-----------------------------	---

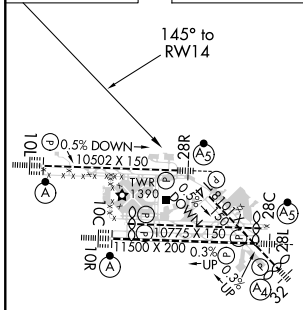
# RNAV (GPS) RWY 14

PITTSBURGH INTL (PIT)

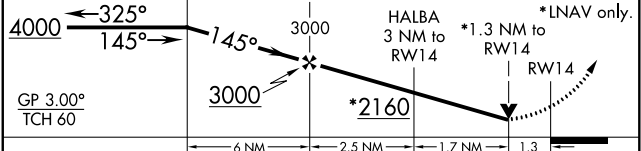
<p><b>⚠</b> For uncompensated Baro-VNAV systems, LNAV/VNAV NA below -17°C (2°F) or above 54°C (130°F). Rwy 14 helicopter visibility reduction below RVR 4000 NA. DME/DME RNP-0.3 NA.</p>			<p>MISSED APPROACH: Climb to 4000 direct JAKMA and on track 159° to AGC VOR/DME and hold.</p>	
D-ATIS ARR <b>127.25</b> DEP <b>135.9</b>	PITTSBURGH APP CON <b>123.95 360.8</b>	PITTSBURGH TOWER <b>128.3 291.7</b>	GND CON SOUTH <b>121.9 348.6</b> NORTH <b>127.8 348.6</b>	CLNC DEL <b>126.75 353.7</b>



ELEV 1203	<b>D</b>	TDZE 1148
-----------	----------	-----------



<p>VGSI and RNAV glidepath not coincident (VGSI Angle 3.00/TCH 67).</p>			
4000	JAKMA	tr 159°	AGC



CATEGORY	A	B	C	D
LPV DA		1636-1¾	488 (500-1¾)	
LNAV/VNAV DA		1654-1¾	506 (500-1¾)	
LNAV MDA	1640/55	492 (500-1)	1640/60	492 (500-1¾)
<b>C</b> CIRCLING	1700-1	497 (500-1)	1880-2	1880-2½ 677 (700-2½)

REIL Rwy 10C  
HIRL all Rwys  
TDZ/CL Rwys 10L, 10R, 28L, 28R,  
28C, and 32

NE-4, 27 JAN 2022 to 24 FEB 2022

NE-4, 27 JAN 2022 to 24 FEB 2022