

# RNAV (RNP) Z RWY 10C

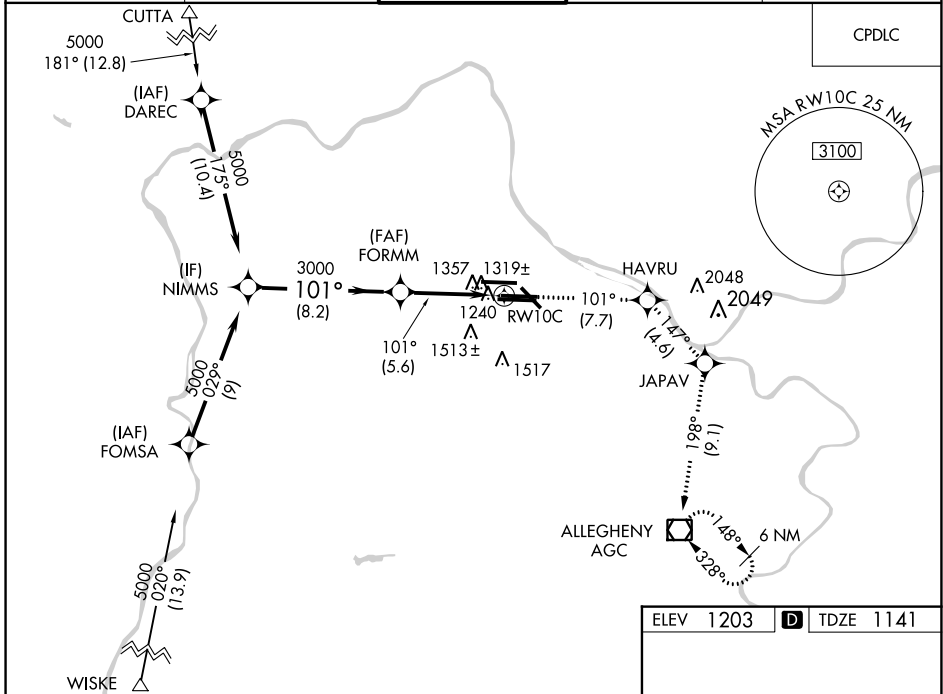
PITTSBURGH INTL (PIT)

APP CRS <b>101°</b>	Rwy Idg <b>9708</b>
	TDZE <b>1141</b>
	Apt Elev <b>1203</b>

▼ For uncompensated Baro-VNAV systems, procedure NA below -17°C (1°F) or above 46°C (116°F). GPS Required. Simultaneous approach authorized with ILS or LOC Rwy 10L, ILS Rwy 10L (Cat II), ILS Rwy 10L (Cat III). Use of FD or AP providing RNAV track guidance required during simultaneous operations.

MISSED APPROACH: Climb to 4000 on track 101° to HAVRU and on track 147° to JAPAV and on track 198° to AGC VOR/DME and hold.

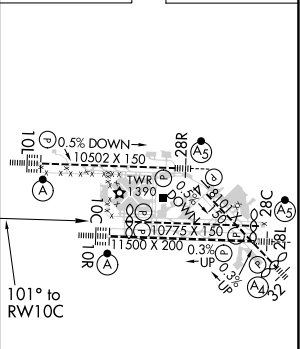
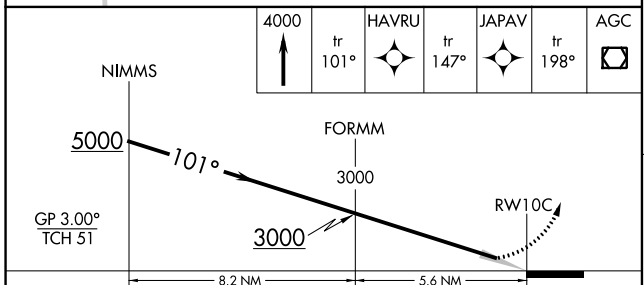
D-ATIS ARR <b>127.25</b> DEP <b>135.9</b>	PITTSBURGH APP CON <b>123.95 360.8</b>	PITTSBURGH TOWER <b>128.3 291.7</b>	GND CON SOUTH <b>121.9 348.6</b> NORTH <b>127.8 348.6</b>	CLNC DEL <b>126.75 353.7</b>
---	---	--	---	---------------------------------



NE-4, 27 JAN 2022 to 24 FEB 2022

NE-4, 27 JAN 2022 to 24 FEB 2022

ELEV 1203	TDZE 1141
-----------	-----------



CATEGORY	A	B	C	D
RNP 0.11 DA		1540-1½	399 (400-1½)	
RNP 0.20 DA		1566-1½	425 (400-1½)	
RNP 0.30 DA		1669-1¾	528 (500-1¾)	

**AUTHORIZATION REQUIRED**

REIL Rwy 10C  
HIRL all Rwys  
TDZ/CL Rwys 10L, 10R, 28L, 28R, 28C, and 32