

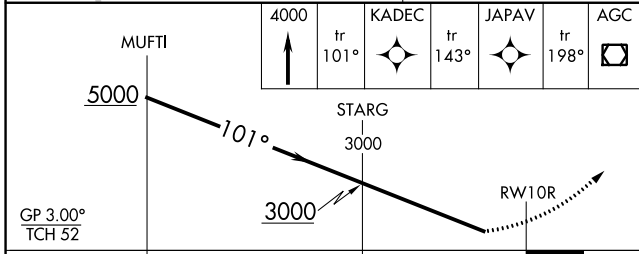
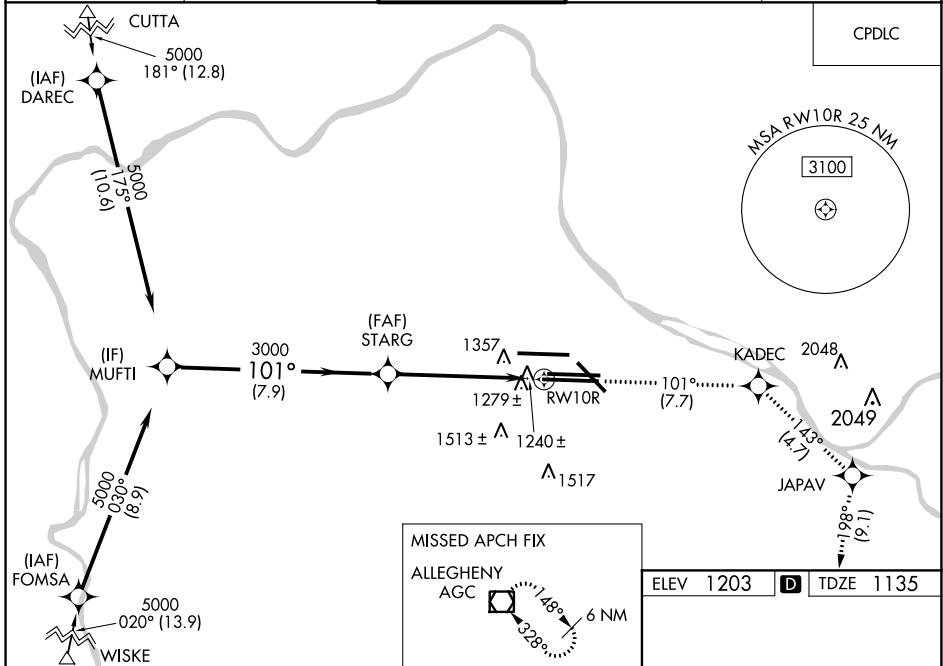
APP CRS	Rwy Idg	11492
101°	TDZE	1135
	Apt Elev	1203

RNAV (RNP) Z RWY 10R

PITTSBURGH INTL (PIT)

RNP AR APCH: ▼ For uncompensated Baro-VNAV systems, procedure NA below -17°C or above 46°C. For inop ALS, increase RNP 0.14 all Cats visibility to RVR 6000, RNP 0.20 all Cats visibility to 1½ SM, RNP 0.30 all Cats visibility to 2½ SM. Simultaneous approach authorized with ILS or LOC Rwy 10L, ILS Rwy 10L (Cat II), ILS Rwy 10L (Cat III). Use of FD or AP providing RNAV track guidance required during simultaneous operations.		ALSF-2 	MISSED APPROACH: Climb to 4000 on track 101° to KADEC and on track 143° to JAPAV and on track 198° to AGC VOR/DME and hold.
--	--	------------	---

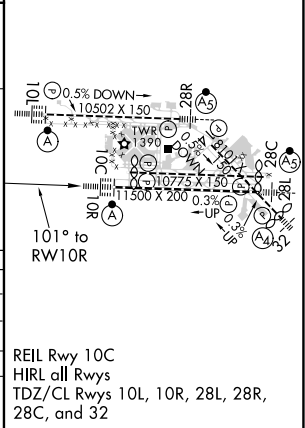
D-ATIS	PITTSBURGH APP CON	PITTSBURGH TOWER	GND CON	CLNC DEL
ARR 127.25	123.95 360.8	128.3 291.7	SOUTH 121.9 348.6	126.75 353.7
DEP 135.9			NORTH 127.8 348.6	



ELEV 1203	D	TDZE 1135
-----------	----------	-----------

CATEGORY	A	B	C	D
RNP 0.14 DA		1511/40	376 (400-¾)	
RNP 0.20 DA		1572/50	437 (400-1)	
RNP 0.30 DA		1745-1¾	610 (600-1¾)	

AUTHORIZATION REQUIRED



NE-4, 27 JAN 2022 to 24 FEB 2022

NE-4, 27 JAN 2022 to 24 FEB 2022