

RNAV (RNP) Z RWY 28C

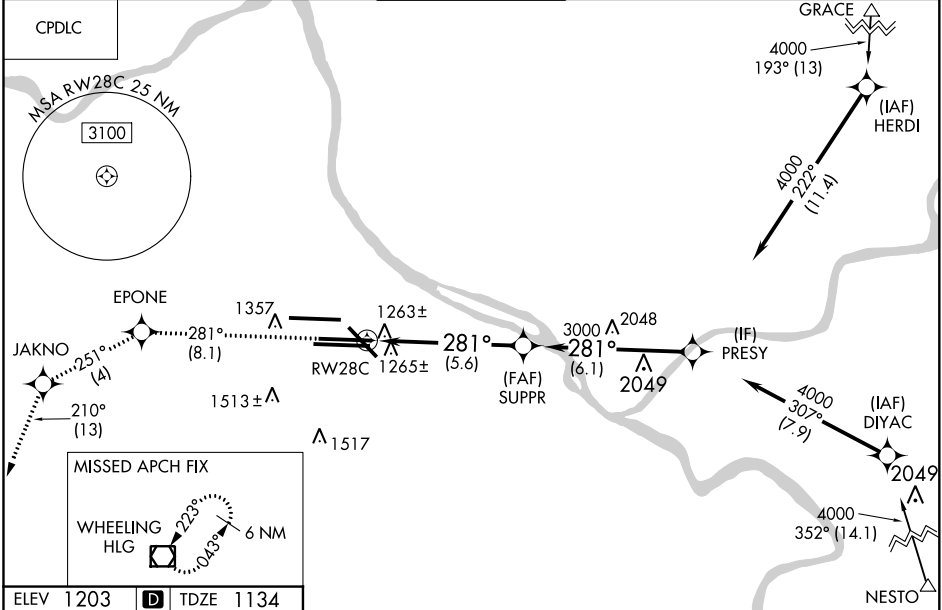
PITTSBURGH INTL (PIT)

APP CRS 281°	Rwy Idg TDZE Apt Elev	9708 1134 1203
------------------------	-----------------------------	---

T For uncompensated Baro-VNAV systems procedure NA below -17°C (1°F) or above 46°C (116°F). GPS Required. Rwy 28C helicopter visibility reduction below RVR 4000 NA. Simultaneous approach authorized with ILS or LOC Rwy 28R, ILS Rwy 28R (Cat II). Use of FD or AP providing RNAV track guidance required during simultaneous operations.

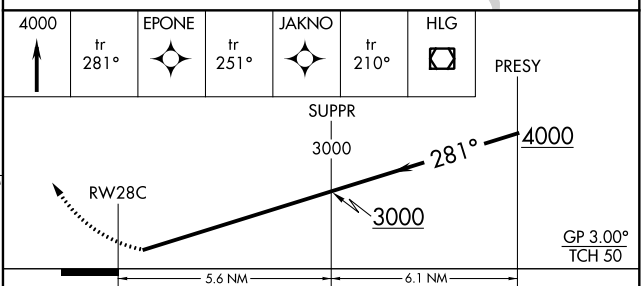
MISSED APPROACH: Climb to 4000 on track 281° to EPONE on track 251° to JAKNO and on track 210° to HLG VOR/DME and hold.

D-ATIS ARR 127.25 DEP 135.9	PITTSBURGH APP CON 123.95 360.8	PITTSBURGH TOWER 128.3 291.7	GND CON SOUTH 121.9 348.6 NORTH 127.8 348.6	CLNC DEL 126.75 353.7
---	---	--	---	---------------------------------



NE-4, 27 JAN 2022 to 24 FEB 2022

NE-4, 27 JAN 2022 to 24 FEB 2022



CATEGORY	A	B	C	D
RNP 0.14 DA		1527/60	393 (400-1¼)	
RNP 0.16 DA		1531-1½	397 (400-1½)	
RNP 0.30 DA		1576-1½	442 (400-1½)	

REIL Rwy 10C
HIRL all Rwys
TDZ/CL Rwys 10L, 10R, 28L, 28R,
28C, and 32

AUTHORIZATION REQUIRED