

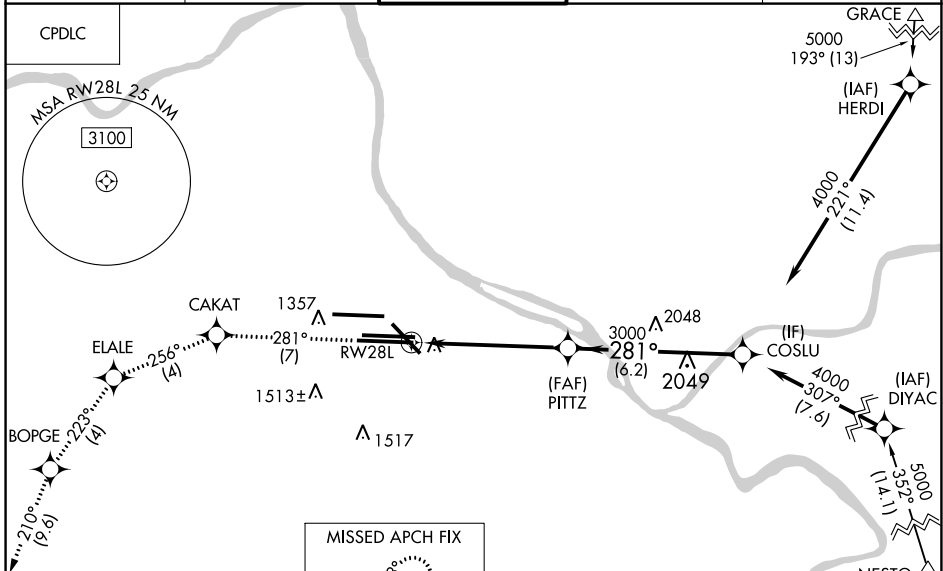
APP CRS <b>281°</b>	Rwy Idg TDZE Apt Elev	<b>11500</b> <b>1125</b> <b>1203</b>
------------------------	-----------------------------	--

# RNAV (RNP) Z RWY 28L

PITTSBURGH INTL (PIT)

For uncompensated Baro-VNAV systems procedure NA below -18°C (0°F) or above 54°C (130°F). Simultaneous approach authorized. GPS Required. For inoperative ALS, increase RNP 0.13 all Cats visibility to RVR 6000.	MALSR 	MISSED APPROACH: Climb to 4000 on track 281° to CAKAT and track 256° to ELALE and track 223° to BOPGE and track 210° to HLG VOR/DME and hold.

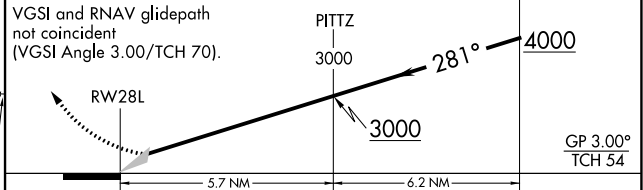
D-ATIS ARR <b>127.25</b> DEP <b>135.9</b>	PITTSBURGH APP CON <b>123.95 360.8</b>	PITTSBURGH TOWER <b>128.3 291.7</b>	GND CON SOUTH <b>121.9 348.6</b> NORTH <b>127.8 348.6</b>	CLNC DEL <b>126.75 353.7</b>
---	---	--	---	---------------------------------



ELEV 1203 **D** TDZE 1125

MISSED APCH FIX  
 6 NM  
 WHEELING HLG

4000	↑	tr 281°	CAKAT	tr 256°	ELALE	tr 223°	BOPGE	tr 210°	HLG	COSLU
------	---	---------	-------	---------	-------	---------	-------	---------	-----	-------



CATEGORY	A	B	C	D
RNP 0.13 DA		1529/40	404 (400-½)	
RNP 0.30 DA		1579/45	454 (400-¾)	

**AUTHORIZATION REQUIRED**

NE-4, 27 JAN 2022 to 24 FEB 2022

NE-4, 27 JAN 2022 to 24 FEB 2022

