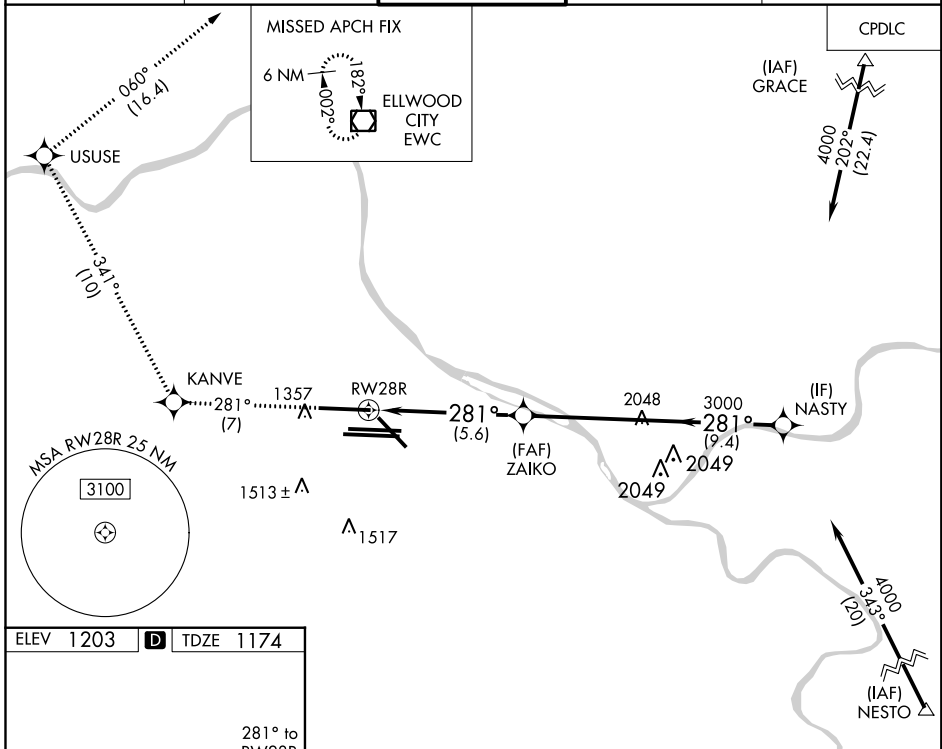


APP CRS 281°	Rwy Idg 10102
	TDZE 1174
	Apt Elev 1203

RNAV (RNP) Z RWY 28R

PITTSBURGH INTL (PIT)

<p>⚠ For uncompensated Baro-VNAV systems, procedure NA below -18°C (0°F) or above 54°C (130°F). Simultaneous approach authorized. GPS required. For inop ALS, increase RNP 0.30 all Cats visibility to 1½ SM.</p>		<p>MALSR</p>	<p>MISSED APPROACH: Climb to 4000 on track 281° to KANVE and track 341° to USUSE and track 060° to EWC VOR/DME and hold.</p>	
<p>D-ATIS ARR 127.25 DEP 135.9</p>	<p>PITTSBURGH APP CON 123.95 360.8</p>	<p>PITTSBURGH TOWER 128.3 291.7</p>	<p>GND CON SOUTH 121.9 348.6 NORTH 127.8 348.6</p>	<p>CLNC DEL 126.75 353.7</p>



ELEV 1203 **D** TDZE 1174

REIL Rwy 10C
HIRL all Rwys
TDZ/CL Rwys 10L, 10R, 28L, 28R, 28C, and 32

4000	KANVE	USUSE	EWC
↑	tr 341°	tr 060°	
tr 281°			
<p>VGSI and RNAV glidepath not coincident (VGSI Angle 3.00/TCH 71).</p>			
RW28R		3000	4000
5.6 NM		9.3 NM	
GP 3.00°	TCH 55		
CATEGORY	A	B	C
RNP 0.30 DA	1675/55 501 (500-1)		
AUTHORIZATION REQUIRED			

NE-4, 27 JAN 2022 to 24 FEB 2022

NE-4, 27 JAN 2022 to 24 FEB 2022