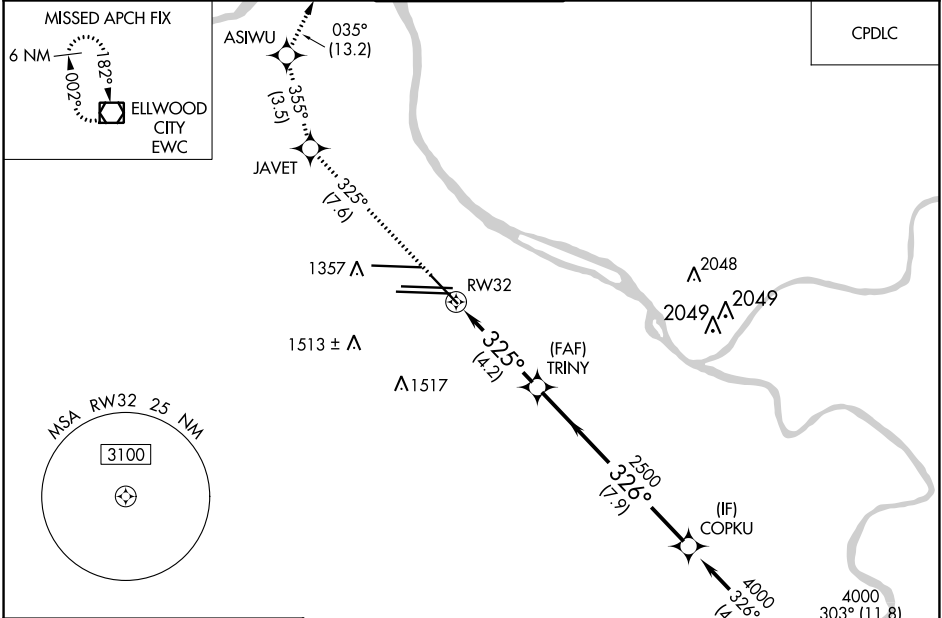


APP CRS	Rwy ldg	7466
325°	TDZE	1124
	Apt Elev	1203

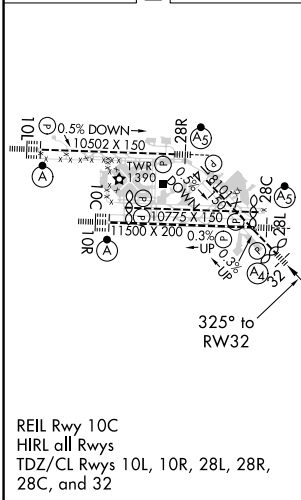
RNAV (RNP) Z RWY 32

PITTSBURGH INTL (PIT)

For uncompensated Baro-VNAV systems, procedure NA below -18°C (0°F) or above 54°C (130°F). GPS required.			MISSED APPROACH: Climb to 4000 on track 325° to JAVET and track 355° to ASIWU and track 035° to EWC VOR/DME and hold.	
D-ATIS	PITTSBURGH APP CON	PITTSBURGH TOWER	GND CON	CLNC DEL
ARR 127.25	123.95 360.8	128.3 291.7	SOUTH 121.9 348.6	126.75 353.7
DEP 135.9			NORTH 127.8 348.6	



ELEV	1203	D	TDZE	1124
------	------	----------	------	------



4000	JAVET	tr 355°	ASIWU	tr 035°	EWC
tr 325°					
VGSIs and RNAV glidepath not coincident (VGSi Angle 3.00/TCH 72).					
	RW32	TRINITY	COPKU		
		2500	4000		
		325°	326°		
		2500			GP 3.00° TCH 37
		4.2 NM	7.9 NM		
CATEGORY	A	B	C	D	
RNP 0.30 DA	1503/40		379 (300-¾)		
AUTHORIZATION REQUIRED					

NE-4, 27 JAN 2022 to 24 FEB 2022

NE-4, 27 JAN 2022 to 24 FEB 2022