

WAAS CH <b>86226</b> <b>W10D</b>	APP CRS <b>101°</b>	Rwy Idg TDZE Apt Elev	<b>1149Z</b> <b>1135</b> <b>1203</b>
--	------------------------	-----------------------------	--

# RNAV (GPS) Y RWY 10R

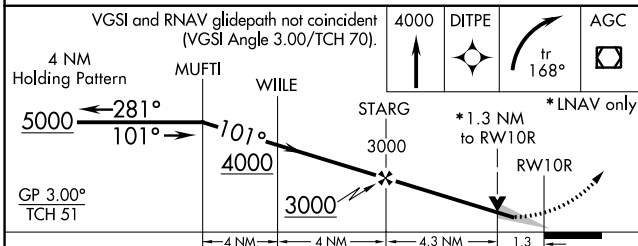
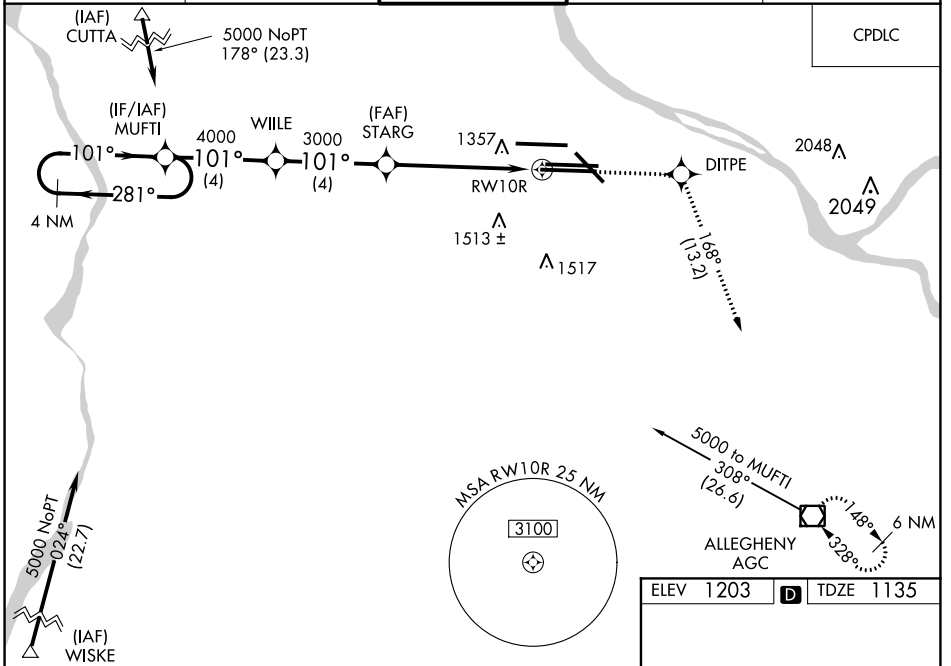
PITTSBURGH INTL (PIT)

**⚠** For uncompensated Baro-VNAV systems, LNAV/VNAV NA below -17°C (2°F) or above 54°C (130°F). DME/DME RNP-0.3 NA. Simultaneous approach authorized with ILS or LOC Rwy 10L, ILS Rwy 10L (Cat II), ILS Rwy 10L (Cat III). LNAV procedure NA during simultaneous operations. Use of FD or AP providing RNAV track guidance required during simultaneous operations. For inop ALS, increase LPV visibility to RVR 5000 all Cats, LNAV/VNAV to 1 3/4 SM all Cats and LNAV Cat C/D visibility to 1 3/8 SM.



**MISSED APPROACH:**  
Climb to 4000 direct  
DITPE and right turn on  
track 168° direct AGC  
VOR/DME and hold.

D-ATIS ARR <b>127.25</b> DEP <b>135.9</b>	PITTSBURGH APP CON <b>123.95 360.8</b>	PITTSBURGH TOWER <b>128.3 291.7</b>	GND CON SOUTH <b>121.9 348.6</b> NORTH <b>127.8 348.6</b>	CLNC DEL <b>126.75 353.7</b>
---	---	--	---	---------------------------------



ELEV 1203	<b>D</b> TDZE 1135
-----------	--------------------

101° to RWY 10R

REIL Rwy 10C  
HIRL all Rwys  
TDZ/CL Rwys 10L, 10R, 28L, 28R,  
28C, and 32

CATEGORY	A	B	C	D
LPV DA		1443/24	308 (300-1/2)	
LNAV/VNAV DA		1658-1 3/8	523 (500-1 3/8)	
LNAV MDA	1620/24	485 (500-1/2)	1620/50	485 (500-1)
<b>C</b> CIRCLING	1700-1	497 (500-1)	1880-2	1880-2 1/4
			677 (700-2)	677 (700-2 1/4)

NE-4, 27 JAN 2022 to 24 FEB 2022

NE-4, 27 JAN 2022 to 24 FEB 2022