

WAAS CH 45527 W28A	APP CRS 281°	Rwy Idg TDZE Apt Elev	9708 1134 1203
--------------------------	-----------------	-----------------------------	----------------------

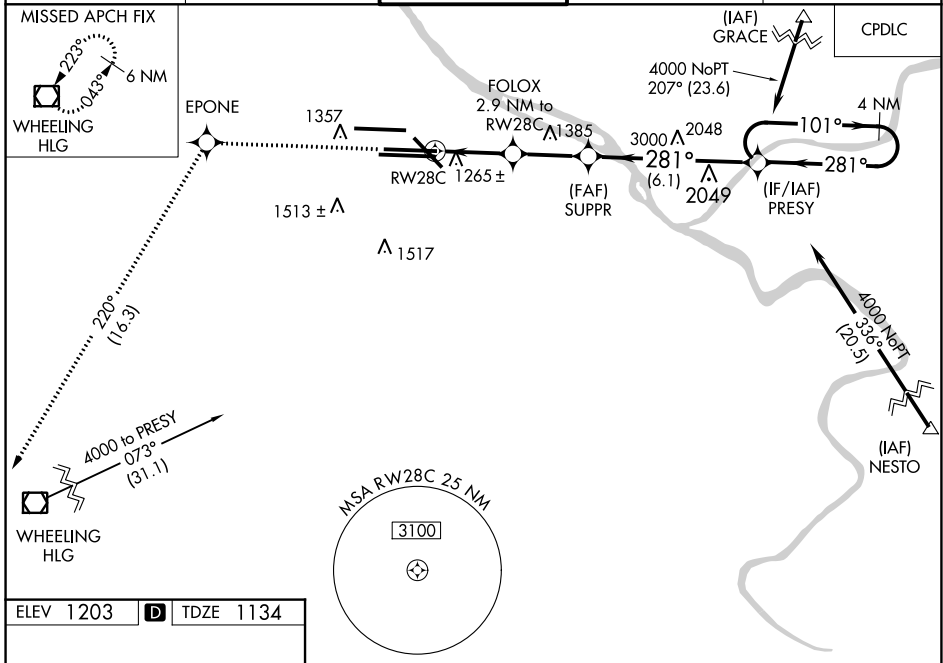
RNAV (GPS) Y RWY 28C

PITTSBURGH INTL (PIT)

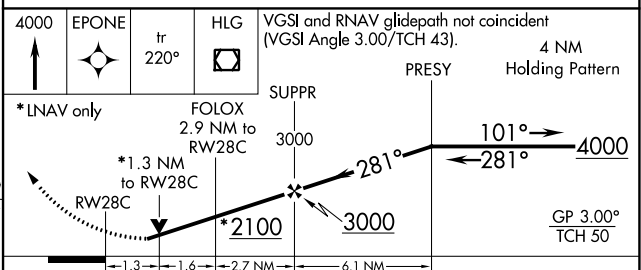
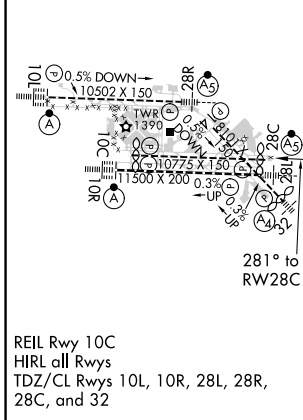
RNP APCH.
 ⚠ For uncompensated Baro-VNAV systems, LNAV/VNAV NA below -17°C (2°F) or above 54°C (130°F).
 ⚠ Rwy 28C helicopter visibility reduction below RVR 4000 NA. Simultaneous approach authorized with ILS or LOC Rwy 28R, ILS Rwy 28R (Cat II). LNAV procedure NA during simultaneous operations. Use of FD or AP providing RNAV track guidance required during simultaneous operations.

MISSED APPROACH:
 Climb to 4000 direct EPONE and on track 220° to HLG
 VOR/DME and hold.

D-ATIS ARR 127.25 DEP 135.9	PITTSBURGH APP CON 123.95 360.8	PITTSBURGH TOWER 128.3 291.7	GND CON SOUTH 121.9 348.6 NORTH 127.8 348.6	CLNC DEL 126.75 353.7
---	---	--	---	---------------------------------



ELEV 1203	D	TDZE 1134
-----------	----------	-----------



CATEGORY	A	B	C	D
LPV DA		1471/60	337 (300-1¼)	
LNAV/VNAV DA		1545-1½	411 (400-1½)	
LNAV MDA	1580/55	446 (400-1)	1580-1⅜ 446 (400-1¾)	1580-1½ 446 (400-1½)
C CIRCLING	1700-1	497 (500-1)	1880-2 677 (700-2)	1880-2¼ 677 (700-2¼)

NE-4, 27 JAN 2022 to 24 FEB 2022

NE-4, 27 JAN 2022 to 24 FEB 2022