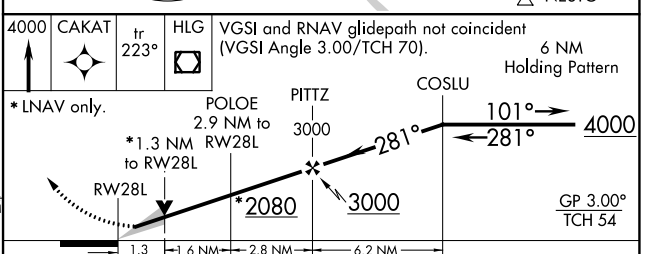
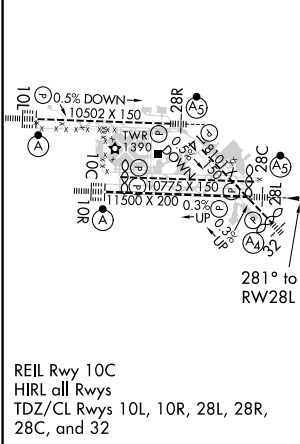
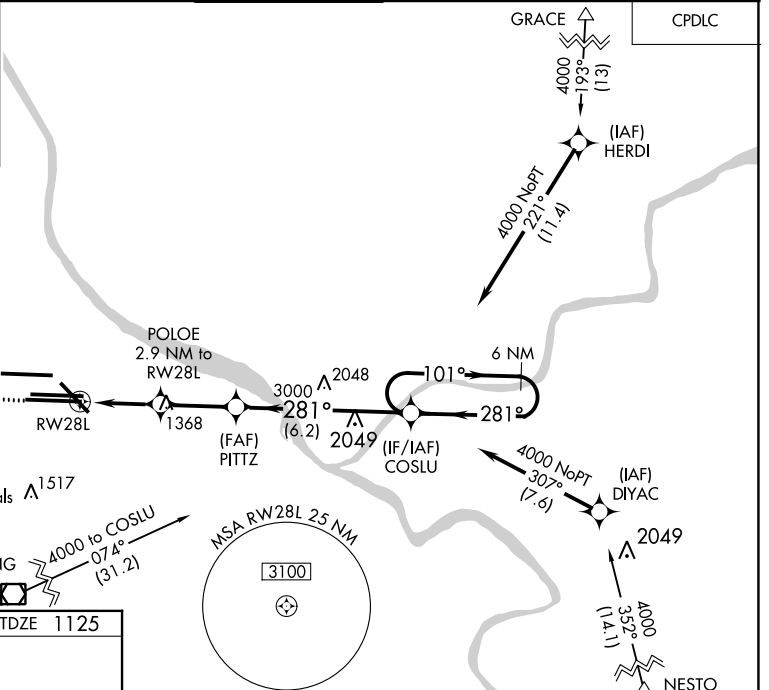
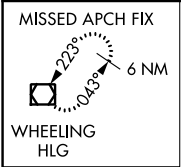


WAAS CH 97326 W28B	APP CRS 281°	Rwy Idg 11500
		TDZE 1125
		Apt Elev 1203

# RNAV (GPS) Y RWY 28L

PITTSBURGH INTL (PIT)

<p>For uncompensated Baro-VNAV systems, LNAV/VNAV NA below -18°C (0°F) or above 54°C (130°F). DME/DME RNP-0.3 NA. For inop ALS, increase LNAV Cats C/D visibility to 1 3/8 SM. LNAV procedure NA during simultaneous operations. Use of FD or AP required during simultaneous operations.</p>	<p>MALS R</p>	<p>MISSED APPROACH: Climb to 4000 direct CAKAT and on track 223° to HLG VOR/DME and hold.</p>	
	<p>D-ATIS ARR <b>127.25</b> DEP <b>135.9</b></p>	<p>PITTSBURGH APP CON <b>123.95 360.8</b></p>	<p>PITTSBURGH TOWER <b>128.3 291.7</b></p>
		<p>GND CON SOUTH <b>121.9 348.6</b> NORTH <b>127.8 348.6</b></p>	<p>CLNC DEL <b>126.75 353.7</b></p>



	A	B	C	D
CATEGORY				
LPV DA		1325/18	200 (200-1/2)	
LNAV/VNAV DA		1549/40	424 (400-3/4)	
LNAV MDA	1600/24	475 (400-1/2)	1600/50	475 (400-1)
<b>C</b> CIRCLING	1700-1	497 (500-1)	1880-2 677 (700-2)	1880-2 1/4 677 (700-2 1/4)

NE-4, 27 JAN 2022 to 24 FEB 2022

NE-4, 27 JAN 2022 to 24 FEB 2022