

WAAS CH 40027 W28D	APP CRS 281°	Rwy Idg TDZE Apt Elev	10102 1174 1203
--	------------------------	-----------------------------	--

RNAV (GPS) Y RWY 28R

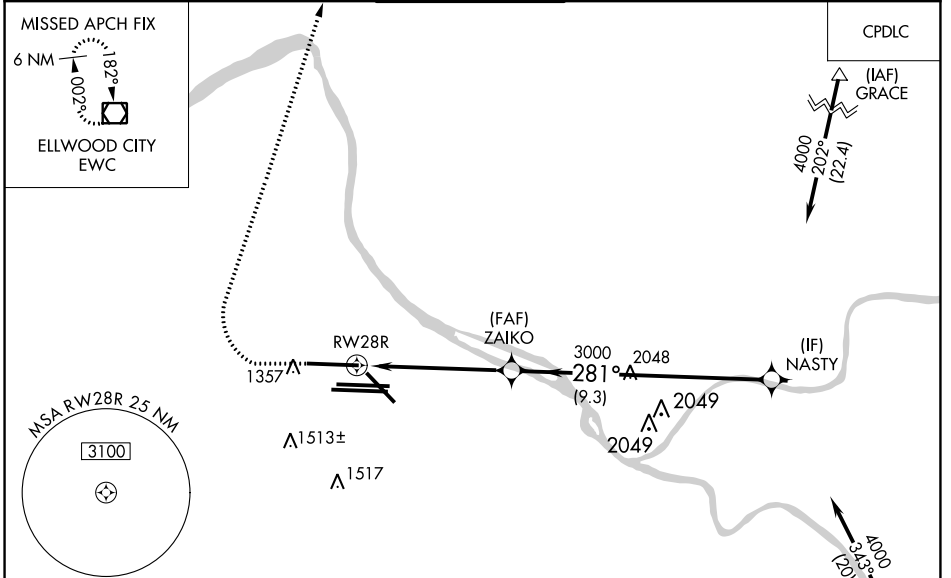
PITTSBURGH INTL (PIT)

⚠ For uncompensated Baro-VNAV systems, LNAV/VNAV NA below -18°C (0°F) or above 54°C (130°F). Simultaneous approach authorized. DME/DME RNP-0.3 NA. For inop ALS, increase LNAV Cats C/D visibility to 1½ SM. LNAV procedure NA during simultaneous operations. Use of FD or AP required during simultaneous operations.

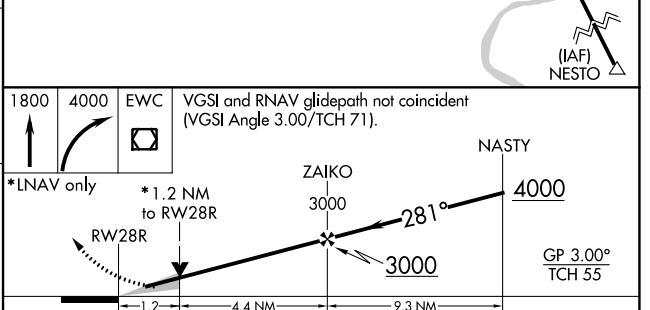
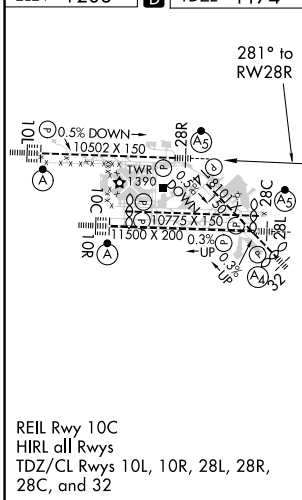
MALSR

MISSED APPROACH: Climb to 1800 then climbing right turn to 4000 direct EWC VOR/DME and hold.

D-ATIS ARR 127.25 DEP 135.9	PITTSBURGH APP CON 123.95 360.8	PITTSBURGH TOWER 128.3 291.7	GND CON SOUTH 121.9 348.6 NORTH 127.8 348.6	CLNC DEL 126.75 353.7
---	---	--	---	---------------------------------



ELEV 1203	D	TDZE 1174
------------------	----------	------------------



CATEGORY	A	B	C	D
LPV DA	1374/18		200 (200-½)	
LNAV/VNAV DA	1629/45		455 (500-¾)	
LNAV MDA	1640/24	466 (500-½)	1640/50	466 (500-1)
C CIRCLING	1700-1	497 (500-1)	1880-2 677 (700-2)	1880-2¼ 677 (700-2¼)

NE-4, 27 JAN 2022 to 24 FEB 2022

NE-4, 27 JAN 2022 to 24 FEB 2022