

WAAS CH 70326 W32A	APP CRS 325°	Rwy Idg 7466 TDZE 1124 Apt Elev 1203
--	------------------------	--

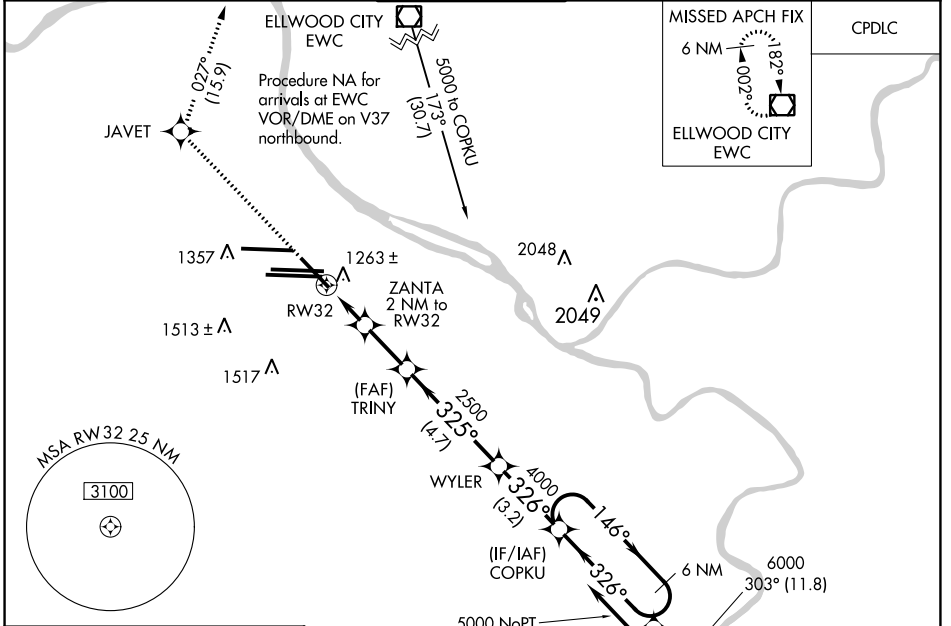
RNAV (GPS) Y RWY 32

PITTSBURGH INTL (PIT)

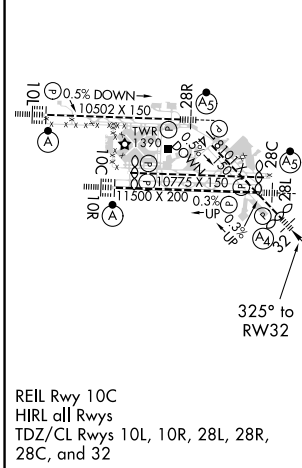
⚠ For uncompensated Baro-VNAV systems, LNAV/VNAV NA below -18°C (0°F) or above 54°C (130°F). DME/DME RNP-0.3 NA. Inop table does not apply to LPV. For inop ALS, increase LNAV/VNAV all Cts visibility to RVR 4500.

MALS **MISSED APPROACH:** Climb to 4000 direct JAVET and on track 027° to EWC VOR/DME and hold.

D-ATIS ARR 127.25 DEP 135.9	PITTSBURGH APP CON 123.95 360.8	PITTSBURGH TOWER 128.3 291.7	GND CON SOUTH 121.9 348.6 NORTH 127.8 348.6	CLNC DEL 126.75 353.7
---	---	--	---	---------------------------------



ELEV 1203	D	TDZE 1124
-----------	----------	-----------



4000	JAVET	EWC	VGSI and RNAV glidepath not coincident (VGSI Angle 3.00/TCH 72).	
↑			6 NM	Holding Pattern
tr 027°				
* LNAV only.		ZANTA 2 NM to RWY 32	TRINITY 2500	WYLER 4000
		*1 NM to RWY 32	1780	146° → 5000
			2500	← 326°
				GP 3.00° TCH 37
			1 NM	1 NM
			2.2 NM	4.7 NM
			3.1 NM	
CATEGORY	A	B	C	D
LPV DA		1324/40	200 (200-¾)	
LNAV/VNAV DA		1438/40	314 (300-1¾)	
LNAV MDA	1520/40	396 (400-¾)	1520/45	396 (400-1⅞)
C CIRCLING	1700-1	497 (500-1)	1880-2 677 (700-2)	1880-2 ¼ 677 (700-2¼)

NE-4, 27 JAN 2022 to 24 FEB 2022

NE-4, 27 JAN 2022 to 24 FEB 2022