

# HI-ILS Y or LOC Y RWY 14

LOC I-GPT <b>110.9</b>	APCH CRS <b>137°</b>	Rwy Idg TDZE Arpt Elev <b>9002</b> <b>27</b> <b>28</b>
---------------------------	-------------------------	---

AL-576 [USAF]

GULFPORT-BILOXI INTL (KGPT)

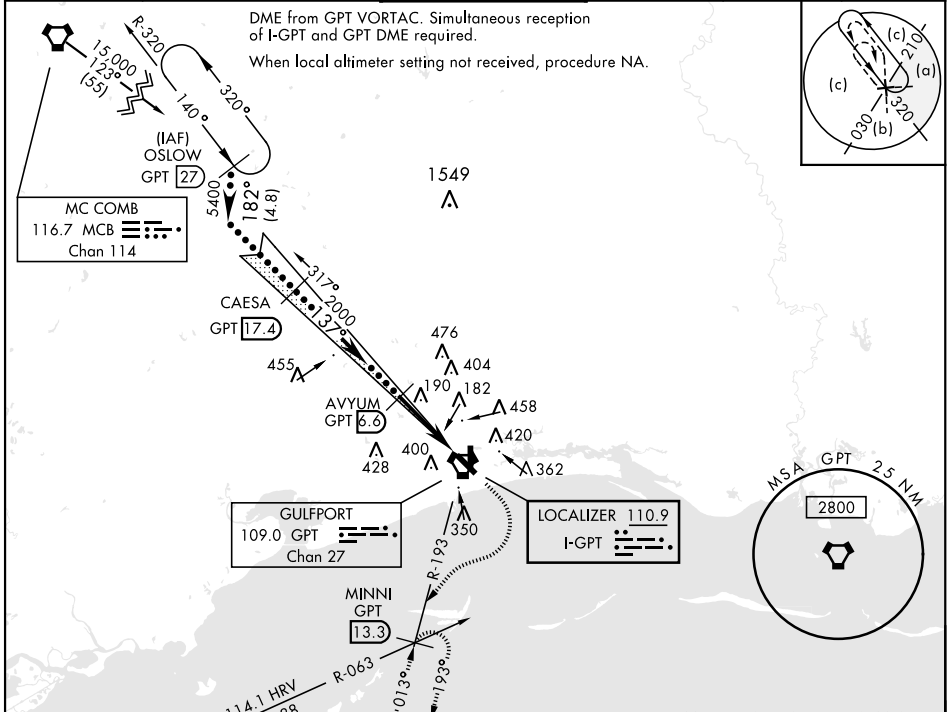
RADAR or DME required.

- ▼ \* When ALS inop, increase RVR to 40.  
RVR 18 authorized with use of FD or AP or HUD to DA.
- ▲ \*\* When ALS inop, increase vis to 1½ miles.



MISSED APPROACH: Climb to 500, then climbing right turn to 3000 on GPT VORTAC R-193 to MINNI/ GPT 13.3 DME and hold.

ATIS ★ <b>119.45</b>	GULFPORT APP CON <b>124.6 354.1</b> 130°-309° <b>127.5 254.25</b> 310°-129°	GULFPORT TOWER ★ <b>123.7</b> CTAF <b>0 339.8</b>	GND CON <b>120.4 348.6</b>	UNICOM <b>122.95</b>	ASR
-------------------------	---	--	-------------------------------	-------------------------	-----



SC-4, 27 JAN 2022 to 24 FEB 2022

SC-4, 27 JAN 2022 to 24 FEB 2022

EMERG SAFE ALT 100 NM 3100			ELEV 28	TDZE 27
<p>OSLOW GPT 27: 15,000, 182°</p> <p>CAESA GPT 17.4: 5400</p> <p>AVYUM GPT 6.6: 2000</p> <p>GPT 2.1: 500</p> <p>ONLIE GPT 1.1: 3000</p> <p>VORTAC</p> <p>MINNI: 137° 6 NM from FAF, ± 84</p>				
CATEGORY	C	D	E	
S-ILS 14 *	227/24	200	(200-½)	
S-LOC 14 **	560/55	533	(600-1¼)	
CIRCLING	820-2¼ 792 (800-2¼)	820-2½ 792 (800-2½)	820-2¾ 792 (800-2¾)	HIRL Rwy 14-32 MRL Rwy 18-36

# HI-ILS Y or LOC Y RWY 14