

HI-ILS Y or LOC Y RWY 32

LOC I-UXI 108.3	APCH CRS 317°	Rwy Idg TDZE Arpt Elev 9002 27 28
---------------------------	-------------------------	---

AL-576 [USAF]

GULFPORT-BILOXI INTL (KGPT)

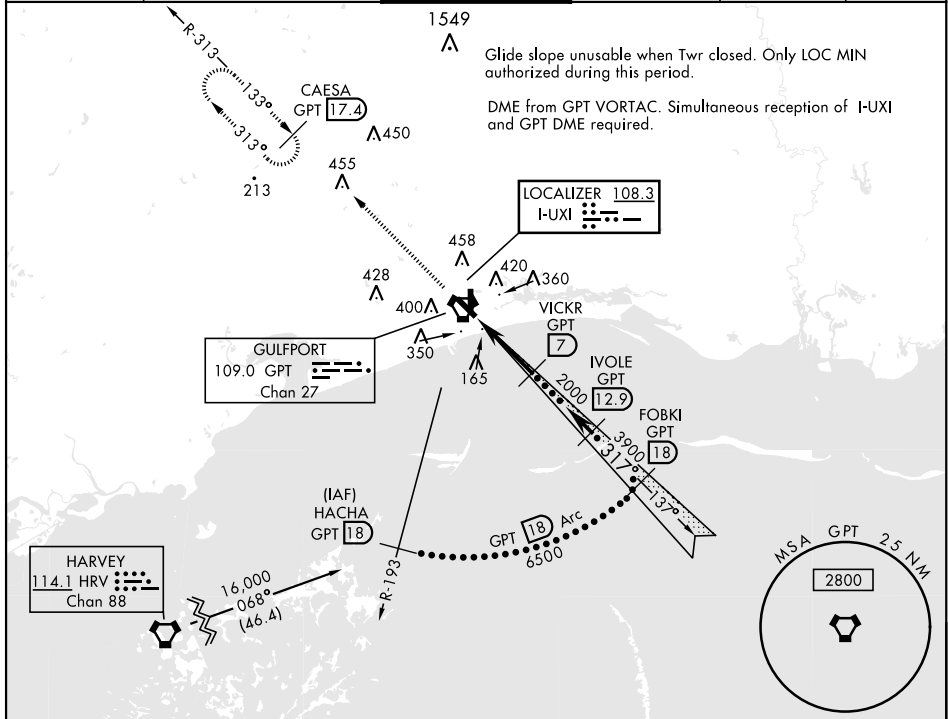
RADAR or DME required.

- ▼ * When ALS inop increase CAT E RVR 40, RVR 18 authorized with use of FD or AP or HUD to DA.
- ▲ ** When ALS inop increase RVR 55.



MISSED APPROACH: Climb to 2000 on GPT VORTAC R-313 to CAESA/GPT 17.4 DME and hold.

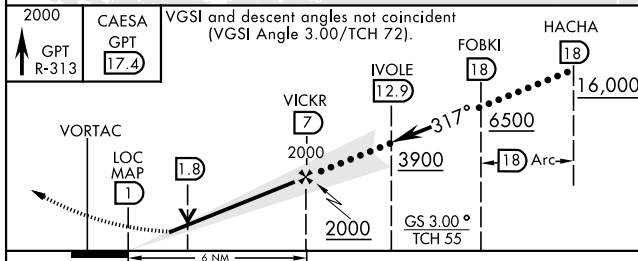
ATIS ★ 119.45	GULFPORT APP CON 124.6 354.1 130°-309° 127.5 254.25 310°-129°	GULFPORT TOWER ★ 123.7 CTAF 0 339.8	GND CON 120.4 348.6	UNICOM 122.95	ASR
-------------------------	---	--	-------------------------------	-------------------------	-----



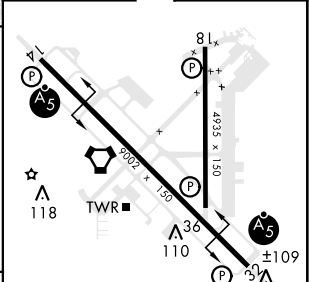
SC-4, 27 JAN 2022 to 24 FEB 2022

SC-4, 27 JAN 2022 to 24 FEB 2022

EMERG SAFE ALT 100 NM 3100



ELEV 28	TDZE 27
---------	---------



CATEGORY	C	D	E	
S-ILS 32 *	228/24	200	(200-½)	
S-LOC 32 **	380/30	352	(400-¾)	
CIRCLING	820-2 ¼ 791 (800-2 ¼)	820-2 ½ 791 (800-2 ½)	820-2 ¾ 791 (800-2 ¾)	HIRL Rwy 14-32 MRL Rwy 18-36

HI-ILS Y or LOC Y RWY 32