

LOC I-GPT 110.9	APP CRS 137°	Rwy Idg TDZE Apt Elev	9002 27 28
---------------------------	------------------------	-----------------------------	---------------------------------------

ILS Z or LOC Z RWY 14

GULFPORT-BILOXI INTL (GPT)

⚠ For inop ALS, increase S-ILS 14 Cat E visibility to RVR 4000 and S-LOC 14 Cat E visibility to 1½ SM.
⚠ ASR **RVR 1800 authorized with use of FD or AP or HUD to DA.

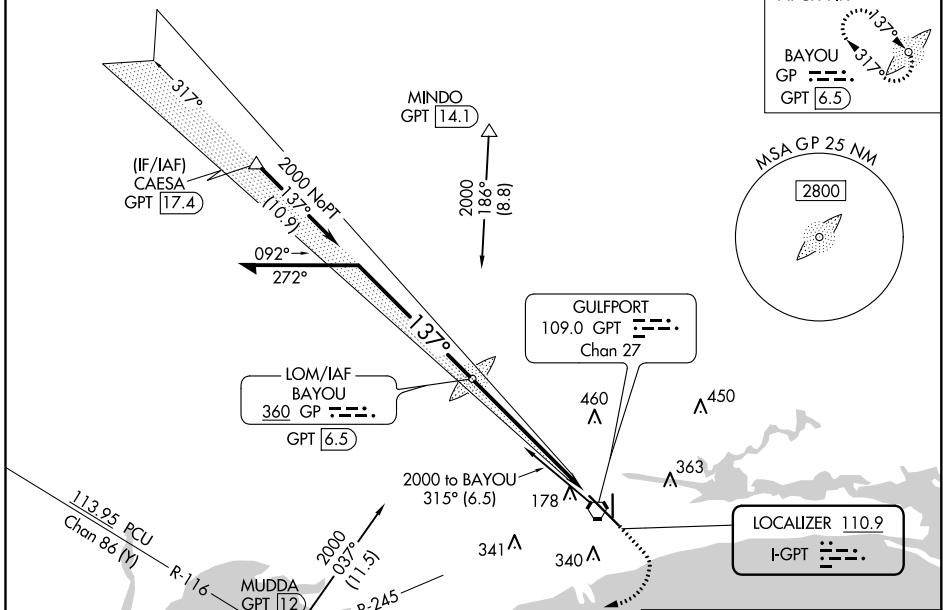
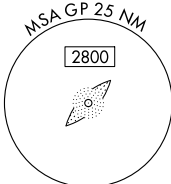
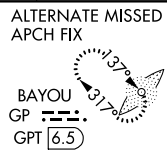
MALSR

MISSED APPROACH: Climb to 500 then climbing right turn to 2000 on GPT VORTAC R-245 to MUDDA INT/12 DME and hold.

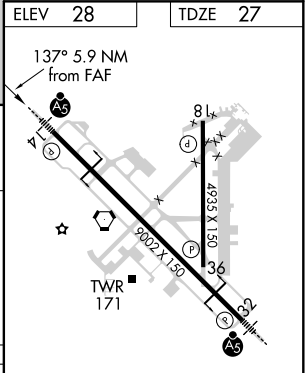
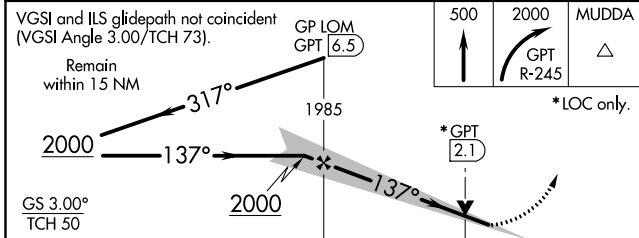
ATIS 119.45	GULFPORT APP CON * 127.5 254.25	GULFPORT TOWER * 123.7 (CTAF) 0 339.8	GND CON 120.4 348.6	UNICOM 122.95
-----------------------	---	---	-------------------------------	-------------------------

Procedure NA for arrivals at CAESA on V552 westbound.

1549



ELEV 28	TDZE 27
---------	---------



CATEGORY	A	B	C	D	E
S-ILS 14**	227/24 200 (200-½)				
S-LOC 14	560/24	533 (600-½)	560/55		533 (600-1)
CIRCLING	560-1	640-1	820-2¼	820-2½	820-2¾
	532 (600-1)	612 (700-1)	792 (800-2¼)	792 (800-2½)	792 (800-2¾)

FAF to MAP 5.9 NM					
Knots	60	90	120	150	180
Min:Sec	5:54	3:56	2:57	2:22	1:58

SC-4, 27 JAN 2022 to 24 FEB 2022

SC-4, 27 JAN 2022 to 24 FEB 2022