

# RNAV (GPS) RWY 18

GULFPORT-BILOXI INTL (GPT)

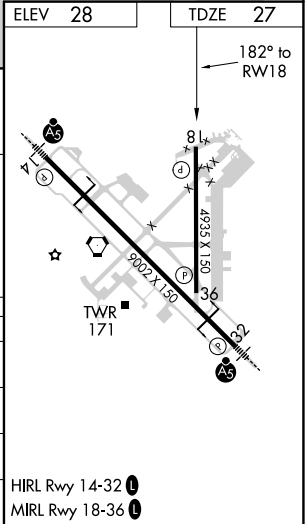
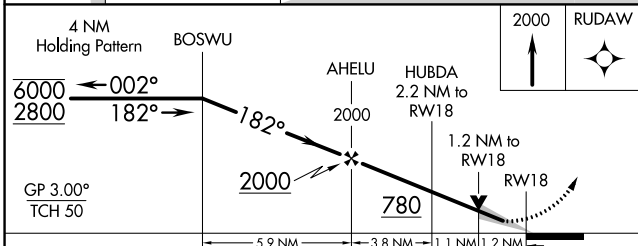
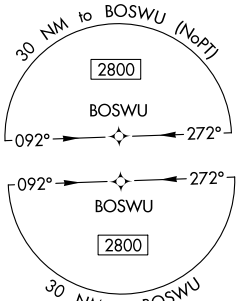
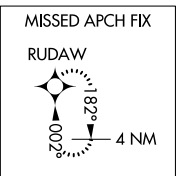
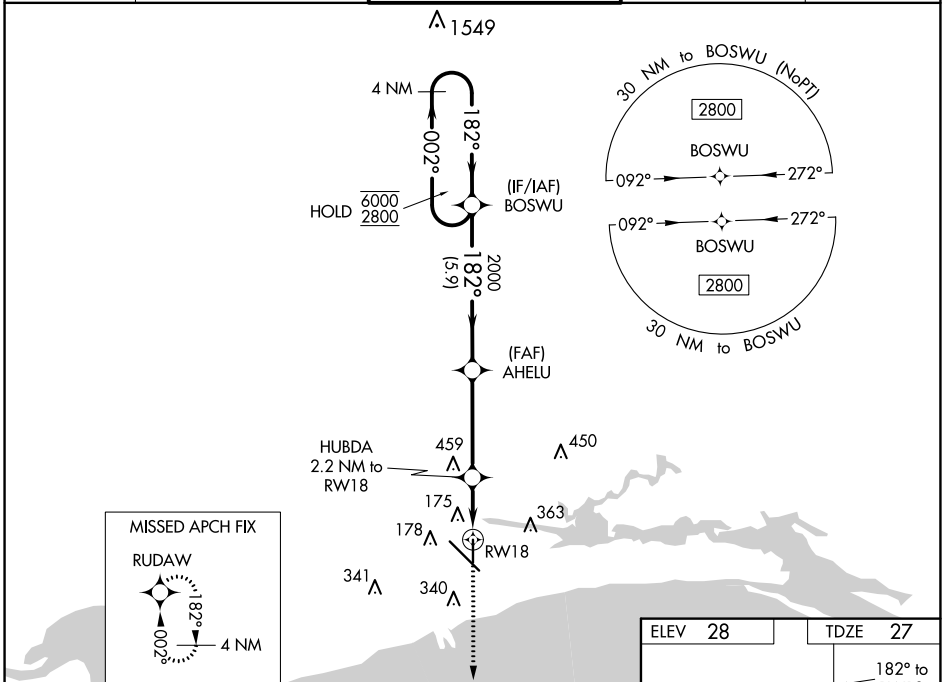
WAAS CH <b>69512</b> <b>W18A</b>	APP CRS <b>182°</b>	Rwy Idg <b>4935</b> TDZE <b>27</b> Apt Elev <b>28</b>
--	------------------------	---

RNP APCH - GPS.

**▲** For uncompensated Baro-VNAV systems, LNAV/VNAV NA below -3°C or above 54°C.

MISSED APPROACH: Climb to 2000 direct RUDAW and hold.

ATIS <b>119.45</b>	GULFPORT APP CON * <b>127.5 254.25</b>	GULFPORT TOWER * <b>123.7 (CTAF) 0 339.8</b>	GND CON <b>120.4 348.6</b>	UNICOM <b>122.95</b>
-----------------------	---	---	-------------------------------	-------------------------



CATEGORY	A	B	C	D
LPV DA		227-3/4	200 (200-3/4)	
LNAV/VNAV DA		442-1 1/8	415 (500-1 1/8)	
LNAV MDA	440-1	413 (500-1)	440-1 1/8	413 (500-1 1/8)
<b>C</b> CIRCLING	520-1 492 (500-1)	640-1 612 (700-1)	760-2 732 (800-2)	760-2 1/4 732 (800-2 1/4)

SC-4, 27 JAN 2022 to 24 FEB 2022

SC-4, 27 JAN 2022 to 24 FEB 2022