

WAAS CH 56207 W32A	APP CRS 317°	Rwy Idg 9002 TDZE 27 Apt Elev 28
--	------------------------	---

RNAV (GPS) RWY 32

GULFPORT-BILOXI INTL (GPT)

RNP APCH-GPS.

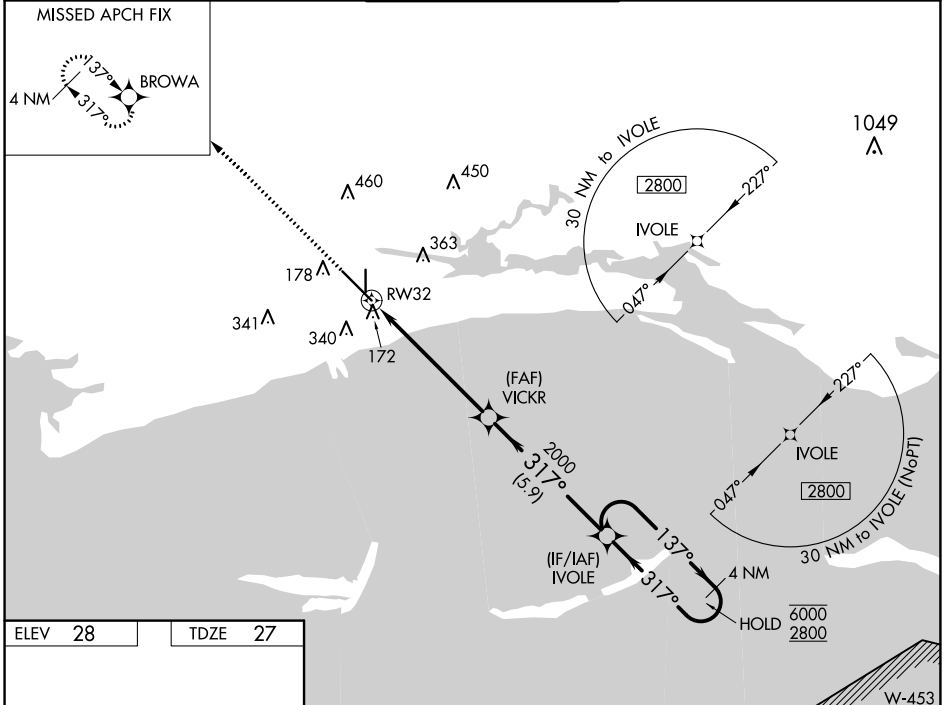
⚠ Rwy 32 helicopter visibility reduction below RVR 4000 NA. Inop table does not apply to LPV. For uncompensated Baro-VNAV systems, LNAV/VNAV NA below -3°C or above 54°C. For inop ALS, increase LNAV Cat A/B visibility to RVR 5500, and Cat C/D to RVR 6000.

MALSR

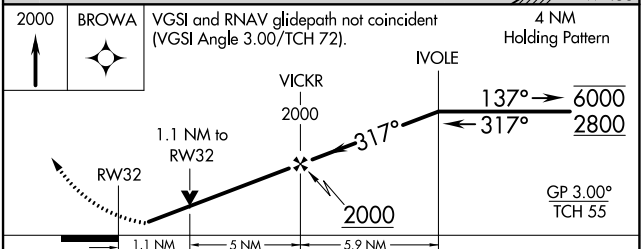
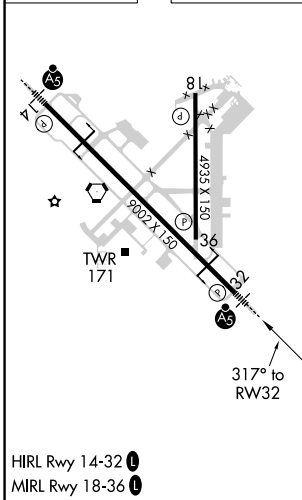


MISSED APPROACH:
Climb to 2000 direct BROWA and hold.

ATIS 119.45	GULFPORT APP CON * 127.5 254.25	GULFPORT TOWER * 123.7 (CTAF) 0 339.8	GND CON 120.4 348.6	UNICOM 122.95
-----------------------	---	---	-------------------------------	-------------------------



ELEV 28	TDZE 27
---------	---------



CATEGORY	A	B	C	D
LPV DA		277/40	250 (300-¾)	
LNAV/VNAV DA		466/40	439 (500-¾)	
LNAV MDA		440/40	413 (500-¾)	
C CIRCLING	520-1 492 (500-1)	640-1 612 (700-1)	760-2 732 (800-2)	760-2¼ 732 (800-2¼)

SC-4, 27 JAN 2022 to 24 FEB 2022

SC-4, 27 JAN 2022 to 24 FEB 2022