

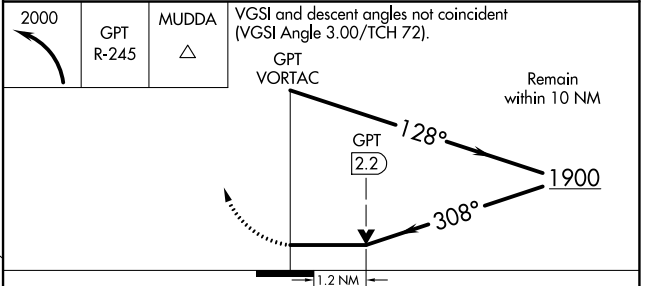
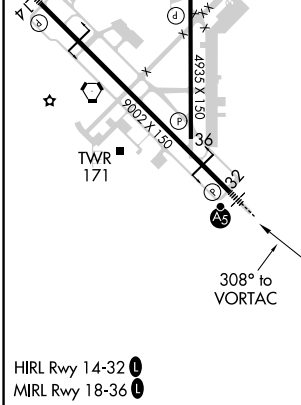
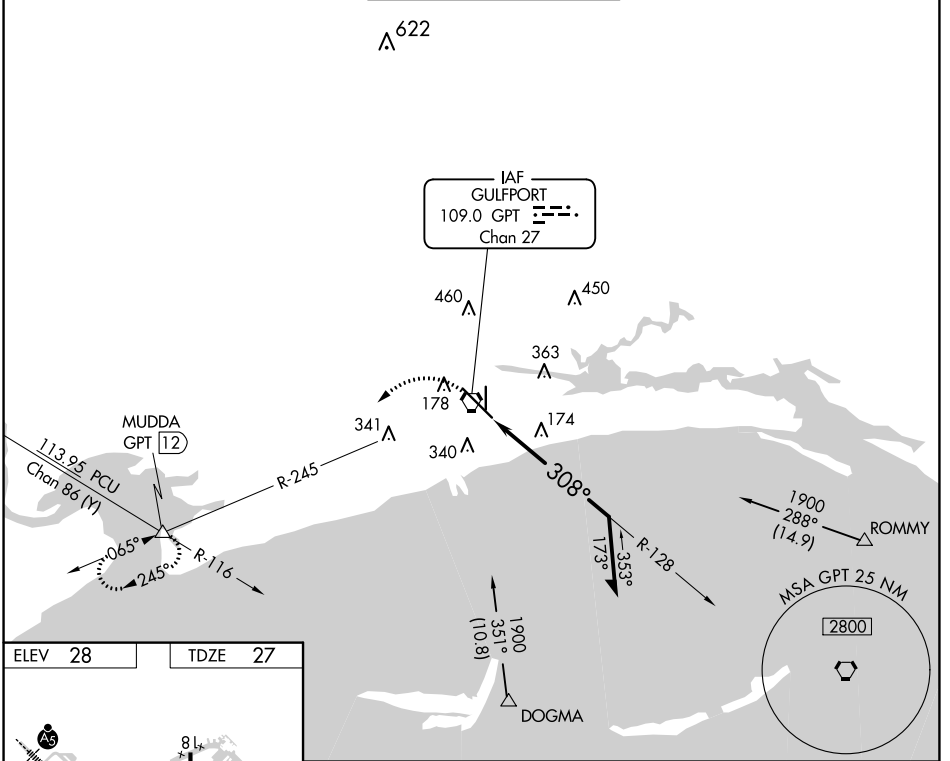
VORTAC GPT <b>109.0</b> Chan <b>27</b>	APP CRS <b>308°</b>	Rwy Idg TDZE Apt Elev	<b>9002</b> <b>27</b> <b>28</b>
--	------------------------	-----------------------------	---------------------------------------

# VOR Y RWY 32

GULFPORT-BILOXI INTL (GPT)

<p><b>⚠</b> Rwy 32 helicopter visibility reduction below RVR 4000 NA. For inop ALS, increase S-32 Cat A/B visibility to RVR 5500.</p>	<p>MALSR</p>	<p>MISSED APPROACH: Climbing left turn to 2000 on GPT VORTAC R-245 to MUDDA INT/12 DME and hold.</p>
---	--------------	--

ATIS <b>119.45</b>	GULFPORT APP CON * <b>127.5 254.25</b>	GULFPORT TOWER * <b>123.7 (CTAF) 339.8</b>	GND CON <b>120.4 348.6</b>	UNICOM <b>122.95</b>
-----------------------	---	---	-------------------------------	-------------------------



CATEGORY	A	B	C	D
S-32	480/40	453 (500-¾)	480/45	453 (500-¾)
<b>C</b> CIRCLING	520-1 492 (500-1)	640-1 612 (700-1)	760-2 732 (800-2)	760-2¼ 732 (800-2¼)

SC-4, 27 JAN 2022 to 24 FEB 2022

SC-4, 27 JAN 2022 to 24 FEB 2022