

APP CRS <b>343°</b>	Rwy Idg TDZE Apt Elev	<b>N/A</b> <b>N/A</b> <b>660</b>
------------------------	-----------------------------	--

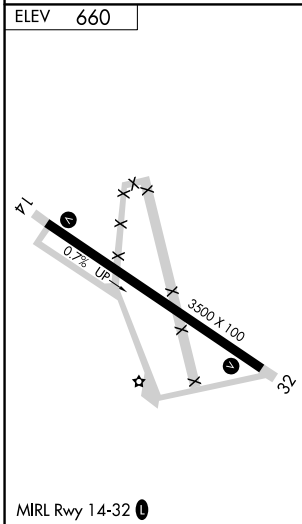
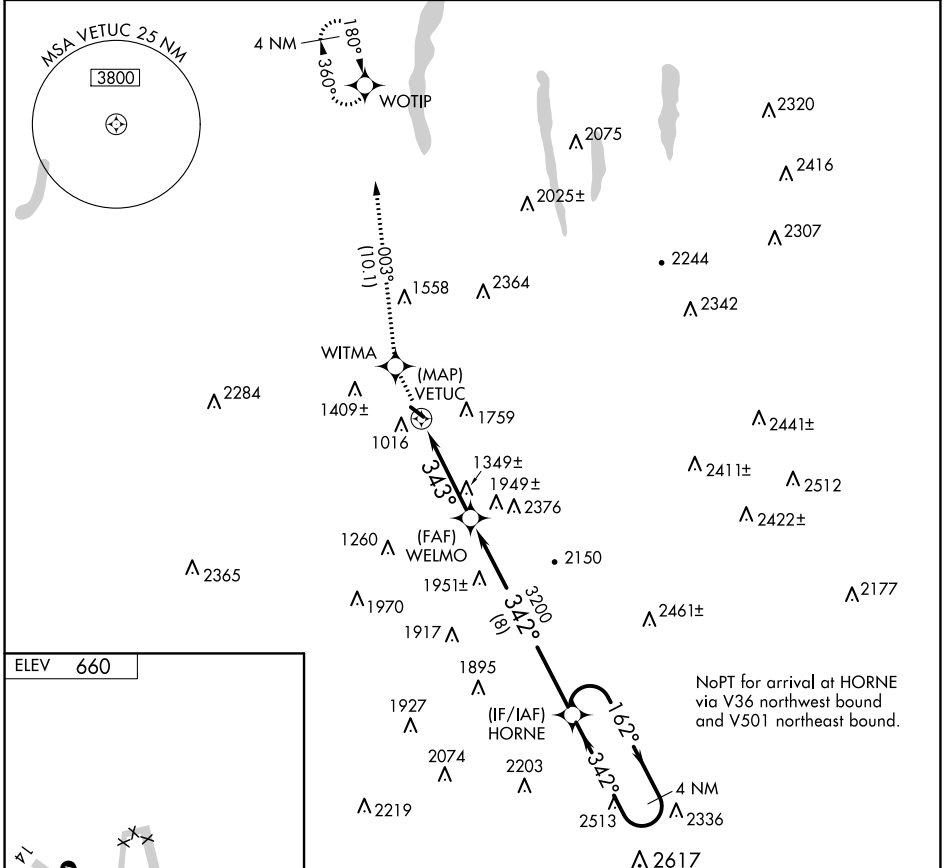
# RNAV (GPS)-A

DANSVILLE MUNI (DSV)

**⚠** DME/DME RNP-0.3 NA. Procedure NA at night. If local altimeter setting not received, use Frederick Douglass/Greater Rochester Intl altimeter setting and increase all MDAs 100 feet.

**⚠** MISSED APPROACH: Climb to 3300 direct WITMA and via 003° track to WOTIP and hold.

ASOS <b>118.325</b>	ROCHESTER APP CON <b>123.7 322.3</b>	UNICOM <b>123.0 (CTAF)</b>
------------------------	---	-------------------------------



3300	WITMA	tr 003°	WOTIP	HORNE	4 NM Holding Pattern
VETUC		WELMO		HORNE	
343°		342°		162° → 3700	
0.3		4 NM		8 NM	
CATEGORY	A	B	C	D	
CIRCLING	1960-1¼ 1300 (1300-¼)	2120-1½ 1460 (1500-½)	2220-3 1560 (1600-3)	NA	

NE-2, 27 JAN 2022 to 24 FEB 2022

NE-2, 27 JAN 2022 to 24 FEB 2022